

READ THIS FIRST

Model W1742/W1742S

IMPORTANT UPDATE

Applies to Models Mfd. Since 09/17
and Owner's Manuals Printed 01/06



Phone #: (360) 734-3482 • Tech Support: techsupport@woodstockint.com • Web: www.woodstockint.com

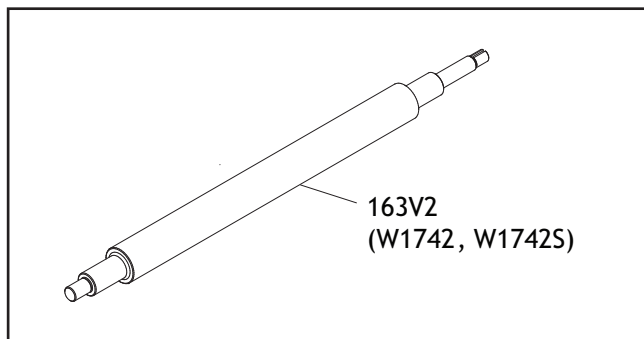
We made the following change to these machines since the owner's manuals were printed:

- Changed outfeed roller from serrated steel to rubber.

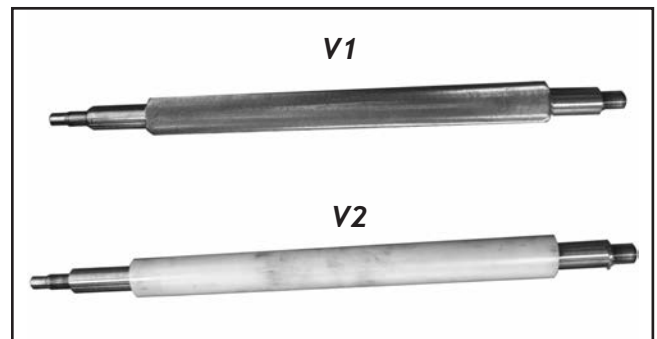
Aside from the information contained in this update, all other content in the owner's manual is applicable and **MUST** be read and understood for your own safety.

IMPORTANT: Keep this update with the owner's manual for future reference. If you have any further questions, contact our Technical Support.

V2 Outfeed Roller



V1 & V2 Outfeed Roller Photos



REF	PART #	DESCRIPTION
163V2	X1742163V2	OUTFEED ROLLER (RUBBER) V2.09.17 (W1742)
163V2	X1742S163V2	OUTFEED ROLLER (RUBBER) V2.09.17 (W1742S)

COPYRIGHT © AUGUST, 2017 BY WOODSTOCK INTERNATIONAL, INC.

**WARNING: NO PORTION OF THIS MANUAL MAY BE REPRODUCED IN ANY SHAPE OR FORM WITHOUT
THE WRITTEN APPROVAL OF WOODSTOCK INTERNATIONAL, INC.**

#19143BL

Printed in China

READ THIS FIRST

Model W1742/W1742S ***IMPORTANT UPDATE***

Applies to Models Mfg. Since 7/12
and Owner's Manual January, 2006

Phone #: (360) 734-3482 • Tech Support: tech-support@shopfox.biz • Web: www.shopfox.biz



The following changes were recently made to these machines since the owner's manual was printed:

- Now certified to meet CSA 22.2 #71.2-10 and UL 987-7th standards.
- Changed the motor nominal voltage from 220V to 240V and added a power cord with a plug.

This document provides relevant updates to portions of the owner's manual that no longer apply and additional information required by CSA—aside from this information, all other content in the owner's manual applies and **MUST** be read and understood for your own safety. **IMPORTANT: Keep this update with the owner's manual for future reference. If you have any further questions, contact our Technical Support.**

Changed Specifications

Electrical

Power Requirement240V, Single-Phase, 60 Hz

Motor

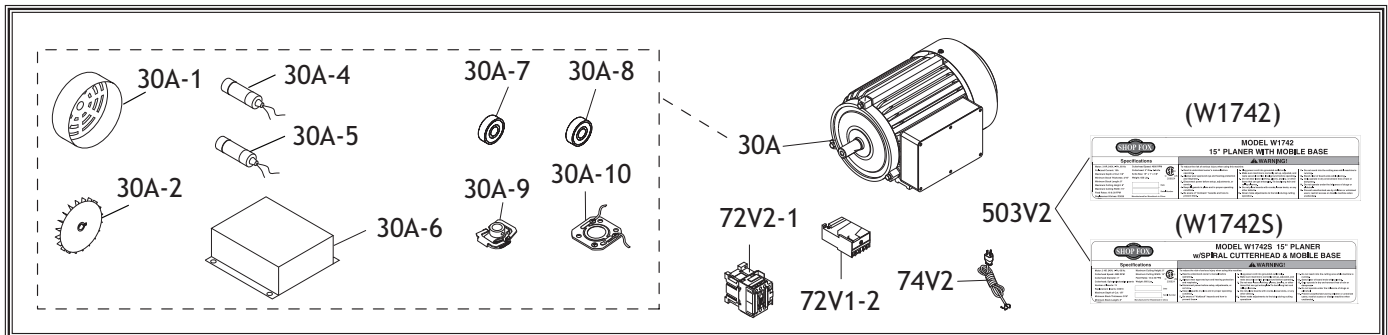
Voltage 240V

Amps..... 15A

Operation Info

Cutterhead Speed 4800 RPM

New/Revised Parts



REF	PART #	DESCRIPTION
30A	X1742030A	MOTOR 3HP 240V 1-PH V2.03.08
30A-1	X1742030A-1	MOTOR FAN COVER V2.03.08
30A-2	X1742030A-2	MOTOR FAN V2.03.08
30A-4	X1742030A-4	R CAPACITOR 20M 400V
30A-5	X1742030A-5	S CAPACITOR 200M 250V 3-7/8 X 1-1/2
30A-6	X1742030-6	MOTOR JUNCTION BOX
30A-7	XP6204ZZ	BALL BEARING 6204ZZ
30A-8	XP6203ZZ	BALL BEARING 6203ZZ

REF	PART #	DESCRIPTION
30A-9	X1742030A-9	CENTRIFUGAL SWITCH 16MM 3450
30A-10	X1742030A-10	CONTACT PLATE 16MM
72V2-1	X1741035-2	CONTACTOR NHD C-09D 230V
72V1-2	X1742072V2-2	OL RELAY NHD NTH-21 17-21A
74V2	X1742074V2	PWR CORD 12G 3W 72" 6-20P V2.07.12
503V2	X1742503V2	ID LABEL CSA V2.07.12 (W1742)
503V2	X1742S503V2	ID LABEL CSA V2.07.12 (W1742S)



COPYRIGHT © AUGUST, 2012 BY WOODSTOCK INTERNATIONAL, INC.
WARNING: NO PORTION OF THIS MANUAL MAY BE REPRODUCED IN ANY SHAPE OR FORM WITHOUT

THE WRITTEN APPROVAL OF WOODSTOCK INTERNATIONAL, INC. #15241BLTS Printed in China

SAFETY

For Your Own Safety, Read Manual Before Operating Machine

The purpose of safety symbols is to attract your attention to possible hazardous conditions. This manual uses a series of symbols and signal words intended to convey the level of importance of the safety messages. The progression of symbols is described below. Remember that safety messages by themselves do not eliminate danger and are not a substitute for proper accident prevention measures—this responsibility is ultimately up to the operator!



Indicates an imminently hazardous situation which, if not avoided, **WILL** result in death or serious injury.



Indicates a potentially hazardous situation which, if not avoided, **COULD** result in death or serious injury.



Indicates a potentially hazardous situation which, if not avoided, **MAY** result in minor or moderate injury.

NOTICE

This symbol is used to alert the user to useful information about proper operation of the equipment or a situation that may cause damage to the machinery.

Standard Machinery Safety Instructions

OWNER'S MANUAL. Read and understand this owner's manual **BEFORE** using machine.

TRAINED OPERATORS ONLY. Untrained operators have a higher risk of being hurt or killed. Only allow trained/supervised people to use this machine. When machine is not being used, disconnect power, remove switch keys, or lock-out machine to prevent unauthorized use—especially around children. Make workshop kid proof!

DANGEROUS ENVIRONMENTS. Do not use machinery in areas that are wet, cluttered, or have poor lighting. Operating machinery in these areas greatly increases the risk of accidents and injury.

MENTAL ALERTNESS REQUIRED. Full mental alertness is required for safe operation of machinery. Never operate under the influence of drugs or alcohol, when tired, or when distracted.

ELECTRICAL EQUIPMENT INJURY RISKS. You can be shocked, burned, or killed by touching live electrical components or improperly grounded machinery. To reduce this risk, only allow an electrician or qualified service personnel to do electrical installation or repair work, and always disconnect power before accessing or exposing electrical equipment.

DISCONNECT POWER FIRST. Always disconnect machine from power supply **BEFORE** making adjustments, changing tooling, or servicing machine. This eliminates the risk of injury from unintended startup or contact with live electrical components.

EYE PROTECTION. Always wear ANSI-approved safety glasses or a face shield when operating or observing machinery to reduce the risk of eye injury or blindness from flying particles. Everyday eyeglasses are not approved safety glasses.

WEARING PROPER APPAREL. Do not wear clothing, apparel, or jewelry that can become entangled in moving parts. Always tie back or cover long hair. Wear non-slip footwear to avoid accidental slips, which could cause loss of workpiece control.

HAZARDOUS DUST. Dust created while using machinery may cause cancer, birth defects, or long-term respiratory damage. Be aware of dust hazards associated with each workpiece material, and always wear a NIOSH-approved respirator to reduce your risk.

HEARING PROTECTION. Always wear hearing protection when operating or observing loud machinery. Extended exposure to this noise without hearing protection can cause permanent hearing loss.

REMOVE ADJUSTING TOOLS. Tools left on machinery can become dangerous projectiles upon startup. Never leave chuck keys, wrenches, or any other tools on machine. Always verify removal before starting!

INTENDED USAGE. Only use machine for its intended purpose and never make modifications not approved by Woodstock. Modifying machine or using it differently than intended may result in malfunction or mechanical failure that can lead to serious personal injury or death!

AWKWARD POSITIONS. Keep proper footing and balance at all times when operating machine. Do not overreach! Avoid awkward hand positions that make workpiece control difficult or increase the risk of accidental injury.

CHILDREN & BYSTANDERS. Keep children and bystanders at a safe distance from the work area. Stop using machine if they become a distraction.

GUARDS & COVERS. Guards and covers reduce accidental contact with moving parts or flying debris—make sure they are properly installed, undamaged, and working correctly.

FORCING MACHINERY. Do not force machine. It will do the job safer and better at the rate for which it was designed.

NEVER STAND ON MACHINE. Serious injury may occur if machine is tipped or if the cutting tool is unintentionally contacted.

STABLE MACHINE. Unexpected movement during operation greatly increases risk of injury or loss of control. Before starting, verify machine is stable and mobile base (if used) is locked.

USE RECOMMENDED ACCESSORIES. Consult this owner's manual or the manufacturer for recommended accessories. Using improper accessories will increase risk of serious injury.

UNATTENDED OPERATION. To reduce the risk of accidental injury, turn machine **OFF** and ensure all moving parts completely stop before walking away. Never leave machine running while unattended.

MAINTAIN WITH CARE. Follow all maintenance instructions and lubrication schedules to keep machine in good working condition. A machine that is improperly maintained could malfunction, leading to serious personal injury or death.

CHECK DAMAGED PARTS. Regularly inspect machine for any condition that may affect safe operation. Immediately repair or replace damaged or mis-adjusted parts before operating machine.

MAINTAIN POWER CORDS. When disconnecting cord-connected machines from power, grab and pull the plug—NOT the cord. Pulling the cord may damage the wires inside, resulting in a short. Do not handle cord/plug with wet hands. Avoid cord damage by keeping it away from heated surfaces, high traffic areas, harsh chemicals, and wet/damp locations.

EXPERIENCING DIFFICULTIES. If at any time you experience difficulties performing the intended operation, stop using the machine! Contact Technical Support at (360) 734-3482.

Additional Safety for Planers

PLANER INJURY RISKS. Familiarize yourself with the main injury risks associated with planers—always use common sense and good judgement to reduce your risk of injury. **Main injury risks from planers:** amputation/lacerations from contact with the moving cutterhead, entanglement/crushing injuries from getting caught in moving parts, blindness or eye injury from flying wood chips, or impact injuries from workpiece kickback.

KICKBACK. Know how to reduce the risk of kickback and kickback-related injuries. “Kickback” occurs during the operation when the workpiece is ejected from the machine at a high rate of speed. Kickback is commonly caused by poor workpiece selection, unsafe feeding techniques, or improper machine setup/maintenance. Kickback injuries typically occur as follows: (1) operator/bystanders are struck by the workpiece, resulting in impact injuries (i.e., blindness, broken bones, bruises, death); (2) operator’s hands are pulled into blade, resulting in amputation or severe lacerations.

REACHING INSIDE PLANER. Never remove guards/covers or reach inside the planer during operation or while connected to power. You could be seriously injured if you accidentally touch the spinning cutterhead or get entangled in moving parts. If a workpiece becomes stuck or sawdust removal is necessary, turn planer OFF and disconnect power before clearing.

DULL/DAMAGED KNIVES/INSERTS. Only use sharp, undamaged knives/inserts. Dull or damaged knives/inserts increase the risk of kickback.

INSPECTING STOCK. To reduce the risk of kickback injuries or machine damage, thoroughly inspect and prepare the workpiece before cutting. Verify workpiece is free of nails, staples, loose knots or foreign material. Workpieces with minor warping should be jointed first or planed with the cupped side facing the infeed table.

BODY PLACEMENT. Stand to one side of planer during the entire operation to avoid getting hit if kickback occurs.

GRAIN DIRECTION. Planing across the grain is hard on the planer and may cause kickback. Plane in the same direction or at a slight angle with the wood grain.

PLANING CORRECT MATERIAL. Only plane natural wood stock. DO NOT plane MDF, OSB, plywood, laminates or other synthetic materials that can break up inside the planer and be ejected towards the operator.

LOOKING INSIDE PLANER. Wood chips fly around inside planer at a high rate of speed during operation. To avoid injury from flying material, DO NOT look inside planer during operation.

CUTTING LIMITATIONS. To reduce risk of kickback hazards or damage to machine, do not exceed maximum depth of cut or minimum board length and thickness found in Data Sheet. Only feed one board at a time.

INFEED ROLLER CLEARANCE. The infeed roller is designed to pull material into the spinning cutterhead. To reduce the risk of entanglement, keep hands, clothing, jewelry, and long hair away from the infeed roller during operation.

FEED WORKPIECE PROPERLY. To reduce the risk of kickback, never start planer with workpiece touching cutterhead. Allow cutterhead to reach full speed before feeding, and do not change feed speed during cutting operation.

WORKPIECE SUPPORT. To reduce risk of kickback, always make sure workpiece can move completely across table without rocking or tipping. Use auxiliary support stands for long stock.

SECURE KNIVES/INSERTS. Loose knives or improperly set inserts can become dangerous projectiles or cause machine damage. Always verify knives/inserts are secure and properly adjusted before operation.

ELECTRICAL

Circuit Requirements

This machine must be connected to the correct size and type of power supply circuit, or fire or electrical damage may occur. Read through this section to determine if an adequate power supply circuit is available. If a correct circuit is not available, a qualified electrician **MUST** install one before you can connect the machine to power.

A power supply circuit includes all electrical equipment between the breaker box or fuse panel in the building and the machine. The power supply circuit used for this machine must be sized to safely handle the full-load current drawn from the machine for an extended period of time. (If this machine is connected to a circuit protected by fuses, use a time delay fuse marked D.)

Full-Load Current Rating

The full-load current rating is the amperage a machine draws at 100% of the rated output power. On machines with multiple motors, this is the amperage drawn by the largest motor or sum of all motors and electrical devices that might operate at one time during normal operations.

Full-Load Current Rating at 240V 15 Amps

Circuit Requirements

This machine is prewired to operate on a 240V power supply circuit that has a verified ground and meets the following requirements:

Circuit Type 240V, 60 Hz, Single-Phase
Circuit Size 20 Amps
Plug/Receptacle NEMA 6-20

WARNING

The machine must be properly set up before it is safe to operate. **DO NOT** connect this machine to the power source until instructed to do so later in this manual.

WARNING



Incorrectly wiring or grounding this machine can cause electrocution, fire, or machine damage. To reduce this risk, only an electrician or qualified service personnel should do any required electrical work on this machine.

NOTICE

The circuit requirements listed in this manual apply to a dedicated circuit—where only one machine will be running at a time. If this machine will be connected to a shared circuit where multiple machines will be running at the same time, consult with an electrician to ensure that the circuit is properly sized for safe operation.

Grounding Requirements

This machine **MUST** be grounded. In the event of certain types of malfunctions or breakdowns, grounding provides a path of least resistance for electric current to travel—in order to reduce the risk of electric shock.

Improper connection of the equipment-grounding wire will increase the risk of electric shock. The wire with green insulation (with/without yellow stripes) is the equipment-grounding wire. If repair or replacement of the power cord or plug is necessary, do not connect the equipment-grounding wire to a live (current carrying) terminal.

Check with a qualified electrician or service personnel if you do not understand these grounding requirements, or if you are in doubt about whether the tool is properly grounded. If you ever notice that a cord or plug is damaged or worn, disconnect it from power, and immediately replace it with a new one.

For 240V Connection

This machine is equipped with a power cord that has an equipment-grounding wire and NEMA 6-20 grounding plug. The plug must only be inserted into a matching receptacle (see **Figure**) that is properly installed and grounded in accordance with local codes and ordinances.

Extension Cords

We do not recommend using an extension cord with this machine. Extension cords cause voltage drop, which may damage electrical components and shorten motor life. Voltage drop increases with longer extension cords and the gauge smaller gauge sizes (higher gauge numbers indicate smaller sizes).

Any extension cord used with this machine must contain a ground wire, match the required plug and receptacle, and meet the following requirements:

Minimum Gauge Size at 240V 12 AWG
Maximum Length (Shorter is Better) 50 ft.

WARNING

The machine must be properly set up before it is safe to operate. **DO NOT** connect this machine to the power source until instructed to do so later in this manual.

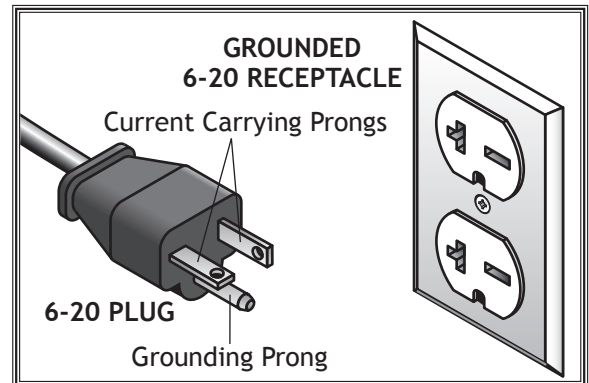
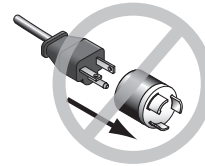


Figure 2. NEMA 6-20 plug & receptacle.

CAUTION








No adapter should be used with the required plug. If the plug does not fit the available receptacle or the machine must be reconnected to a different type of circuit, the reconnection must be made by an electrician or qualified service personnel and it must comply with all local codes and ordinances.

Wiring Diagram

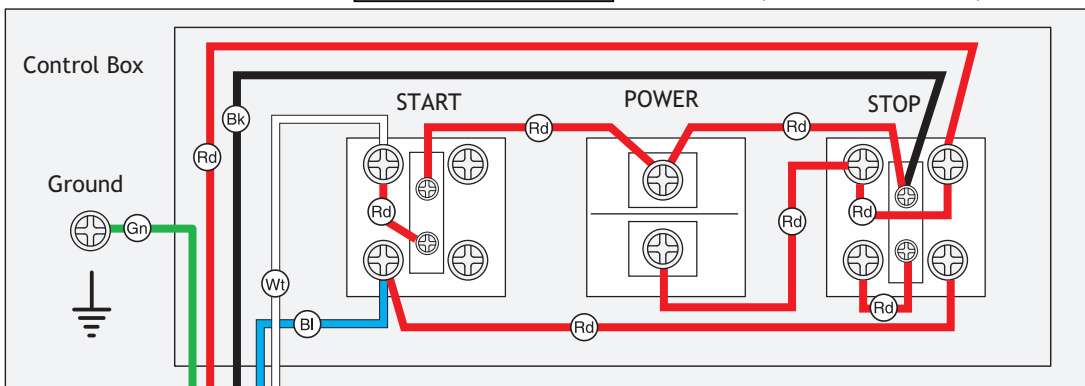
⚠ DANGER

Disconnect power before performing any electrical service. Electricity presents serious shock hazards that will result in severe personal injury and even death!

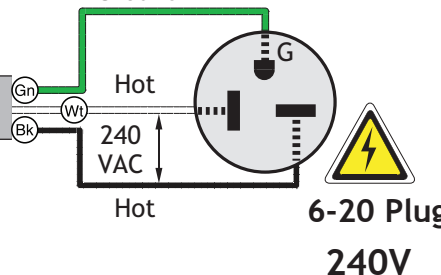
COLOR KEY

BLACK	
WHITE	
GREEN	
RED	
BLUE	

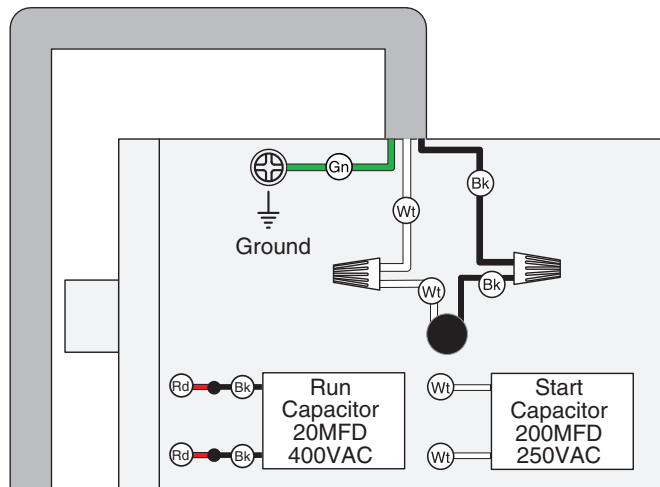
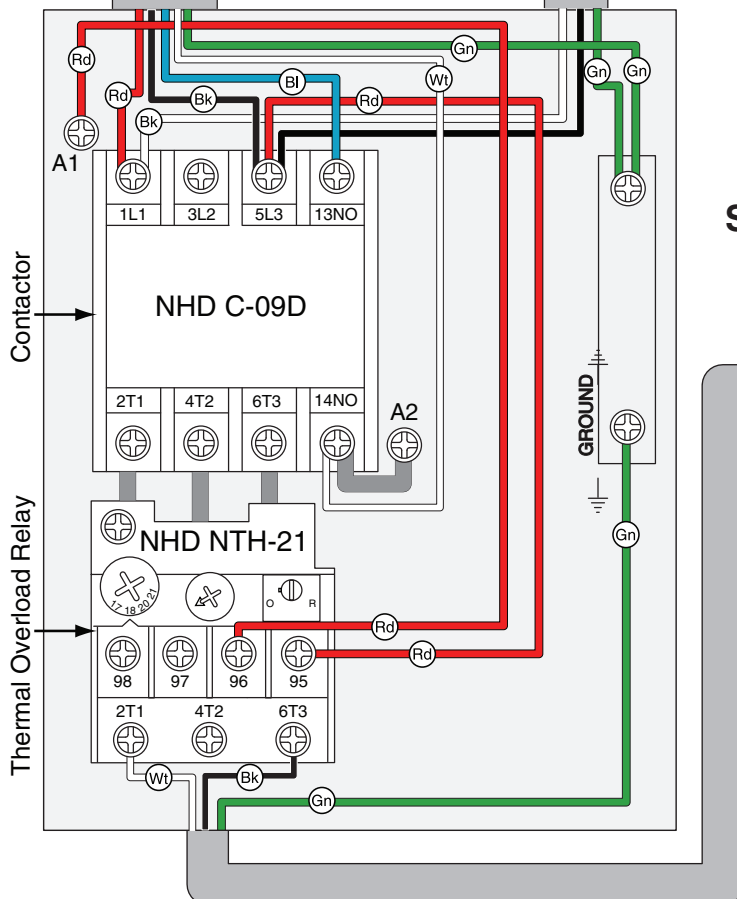
CONTROL PANEL (from Behind)



Ground



MAGNETIC SWITCH ASSY



MOTOR (240V, Single-Phase)



High Quality Machines and Tools

Woodstock International, Inc. carries thousands of products designed to meet the needs of today's woodworkers and metalworkers.
Ask your dealer about these fine products:

BROSE
PRECISION STOP BLOCK

JOINTER PAL®

Rotacator®

THE REBEL®

DURASTICK®

Gutmann®

BOARD BUDDIES®



Junglee®

PLANER PAL®

PARROT VISE®

SLICKPLANE®

PRO-STIK®
ABRASIVE BELT & DISC CLEANER

ACCU-SHARP®



STEELEX®
FINE TOOLS

Aluma-Classic®

STEELEX®
PLUS



WHOLESALE ONLY

WOODSTOCK INTERNATIONAL, INC.

Phone: (360) 734-3482 • Fax: (360) 671-3053 • Toll Free Fax: (800) 647-8801

P.O.Box 2309 • Bellingham, WA 98227

SHOPFOX.BIZ



Model W1742

15" PLANER

MANUAL UPDATE

This update covers changes made to the machine after the owner's manual was printed. Keep this update with your owner's manual for future reference. *If you have questions, contact Tech Support at (360) 734-3482 or by email at tech_support@shopfox.biz.*

Why the Update?

We recently re-designed the Model W1742 motor and changed the capacitor wiring. **Figure 1** shows the new motor wiring.

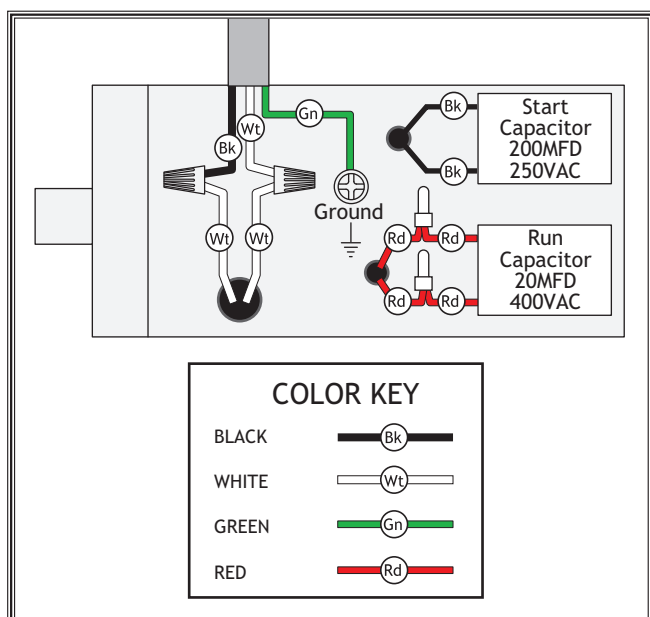


Figure 1. Model W1742 new motor and capacitor wiring.

New Parts for W1742

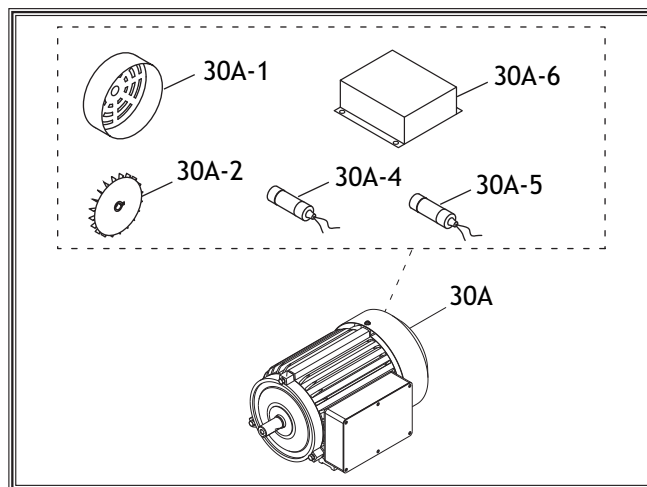


Figure 2. W1742 new motor breakdown.

REF	PART #	DESCRIPTION
30A	X1742030A	MOTOR 3HP 220V V2.03.08
30A-1	X1742030A-1	MOTOR FAN COVER V2.03.08
30A-2	X1742030A-2	MOTOR FAN V2.03.08
30A-4	X1742030A-4	R CAP 20MF 400VAC
30A-5	X1742030A-5	S CAP 200MF 250VAC
30A-6	X1742030A-6	JUNCTION BOX V2.03.08

COPYRIGHT © MARCH, 2008 BY WOODSTOCK INTERNATIONAL, INC.

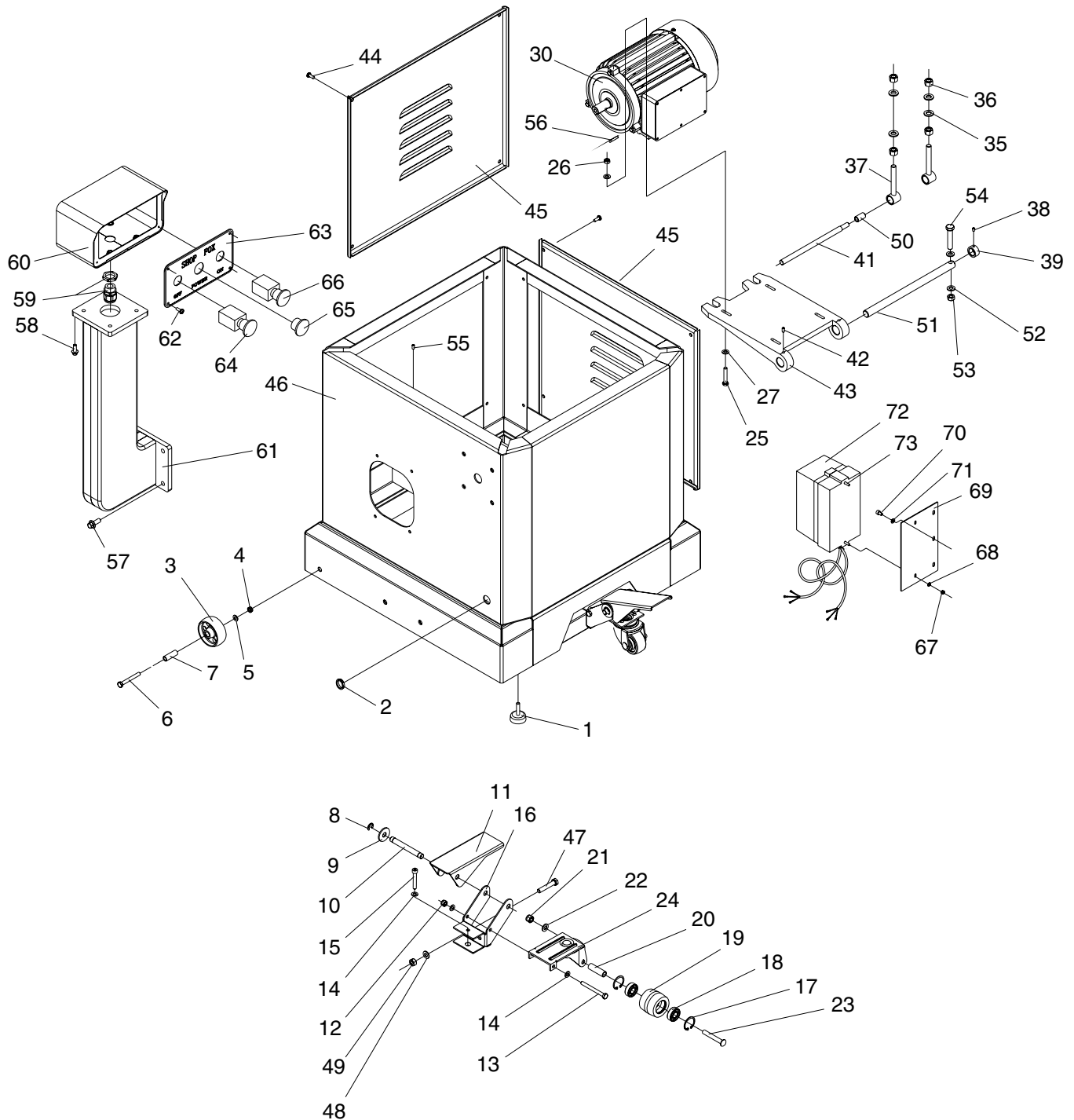
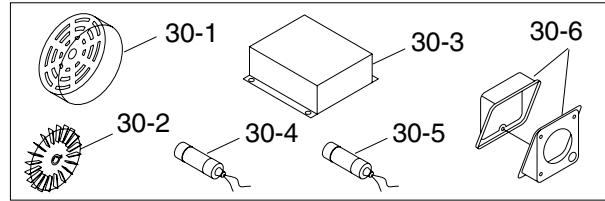
WARNING: NO PORTION OF THIS MANUAL MAY BE REPRODUCED IN ANY SHAPE OR FORM WITHOUT THE WRITTEN APPROVAL OF WOODSTOCK INTERNATIONAL, INC.

#10610BL

Printed in China

PARTS

Cabinet Diagram

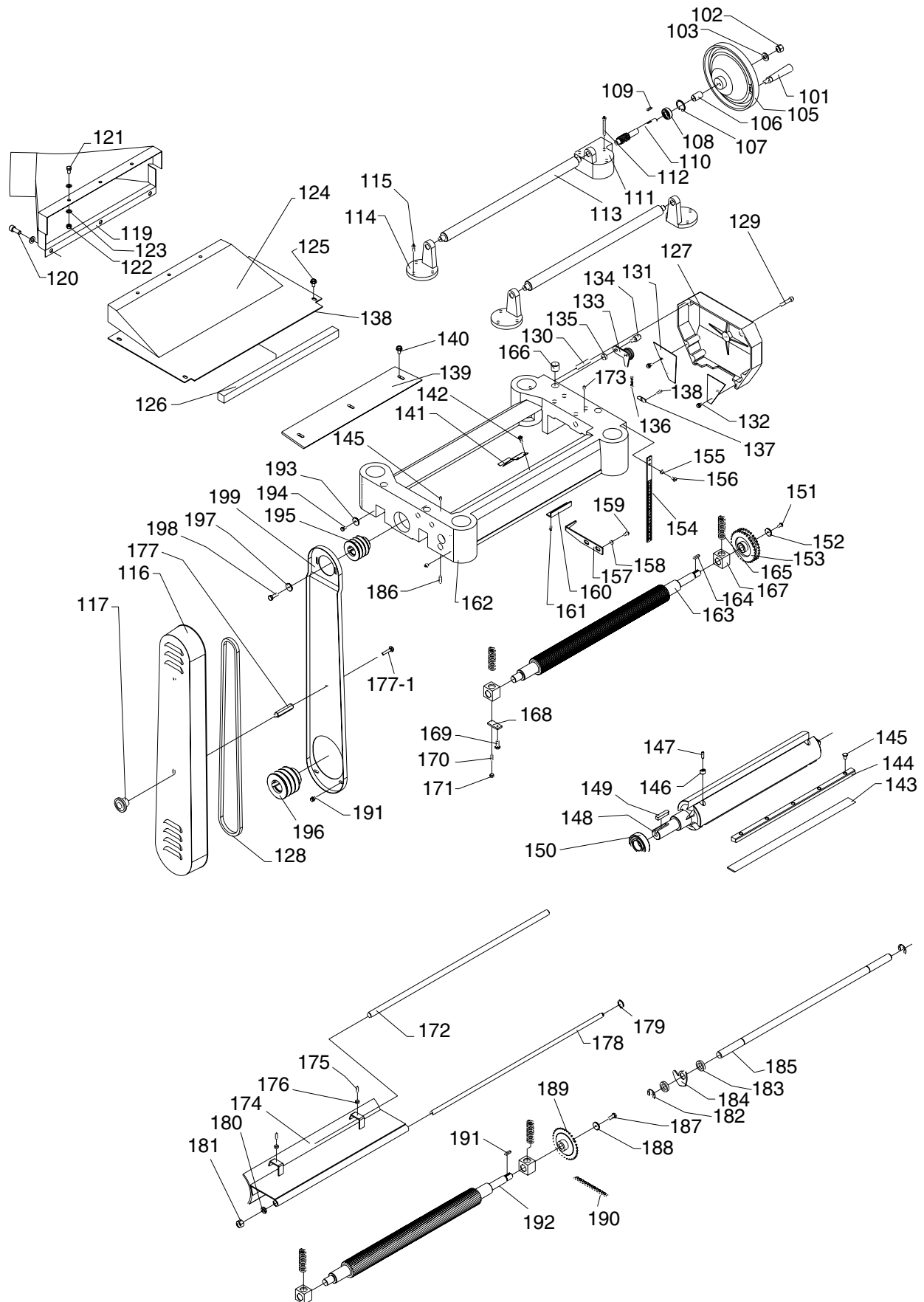


Cabinet Parts List

REF	PART #	DESCRIPTION
1	X1742001	RUBBER FEET
2	X1742002	STRAIN RELIEF
3	X1742003	UNIVERSAL PULLEY
4	XPNO3M	HEX NUT M8-1.25
5	XPW01M	FLAT WASHER 8MM
6	XPB86M	HEX BOLT M8-1.25 X 65
7	X1742007	SLEEVE
8	XPR16M	EXT RETAINING RING 9MM
9	XPW06M	FLAT WASHER 12MM
10	X1742010	SHAFT 12MM
11	X1742011	PEDAL
12	XPNO3M	HEX NUT M8-1.25
13	XPB45M	HEX BOLT M8-1.25 X 100
14	XPW01M	FLAT WASHER 8MM
15	XPB22M	HEX BOLT M8-1.25 X 50
16	X1742016	BRACKET
17	XPR21M	INT RETAINING RING 35MM
18	XP6202	BALL BEARING 6202
19	X1742019	TROLLEY WHEEL
20	X1742020	SLEEVE
21	XPLN09M	LOCK NUT M12-1.75
22	XPW06M	FLAT WASHER 12MM
23	X1742023	SPECIAL BOLT
24	X1742024	TROLLEY UNIVERSAL KIT
25	XPB118M	HEX BOLT M8-1.25 X 45
26	XPNO3M	HEX NUT M8-1.25
27	XPW01M	FLAT WASHER 8MM
30	X1742030	MOTOR 3HP 220V
30-1	X1742030-1	MOTOR FAN COVER
30-2	X1742030-2	MOTOR FAN
30-3	X1742030-3	CAPACITOR COVER
30-4	X1742030-4	RUN CAPACITOR 20UF 250VAC
30-5	X1742030-5	START CAPACITOR 500UF 125VAC
30-6	X1742030-6	JUNCTION BOX
35	XPW06M	FLAT WASHER 12MM
36	XPNO9M	HEX NUT M12-1.75

REF	PART #	DESCRIPTION
37	X1742037	ADJUST BOLT
38	XPSS03M	SET SCREW M6-1 X 8
39	X1742039	COLLAR
41	X1742041	PLATE CONNECTING ROD
42	XPSS04M	SET SCREW M6-1 X 12
43	X1742043	MOTOR PLATE
44	XPFH06M	FLAT HD SCR M6-1 X 20
45	X1742045	COVER
46	X1742046	ENCLOSED STAND
47	XPB143M	HEX BOLT M10-1.5 X 55
48	XPW04M	FLAT WASHER 10MM
49	XPNO2M	HEX NUT M10-1.5
50	X1742050	BUSHING
51	X1742051	PLATE CONNECTING ROD ASSY
52	XPW04M	FLAT WASHER 10MM
53	XPNO2M	HEX NUT M10-1.5
54	XPB44M	HEX BOLT M10-1.5 X 75
55	XPSS14M	SET SCREW M8-1.25 X 12
56	XPK12M	KEY 5 X 5 X 30
57	XPFB06M	HEX BOLT M8-1.25 X 20
58	XPB83M	HEX BOLT M6-1 X 16
59	X1742059	BALL STRAIN RELIEF
60	X1742060	CONTROL BOX
61	X1742061	SUPPORT ARM
62	XPHTK6	TAP SCREW #10 X 3/8
63	X1742063	CONTROL PANEL
64	X1742064	EMERGENCY STOP BUTTON
65	X1742065	POWER LAMP
66	X1742066	ON BUTTON
67	X1742067	HEX NUT M5
68	XPW02M	FLAT WASHER 5MM
69	X1742069	PLATE
70	XPB17M	HEX BOLT M6-1X 10
71	XPW03M	FLAT WASHER 6MM
72	X1742072	MAGNETIC SWITCH ASSY
73	XPS22M	PHLP HD SCREW M5-0.8 X 25

Headstock Parts Diagram

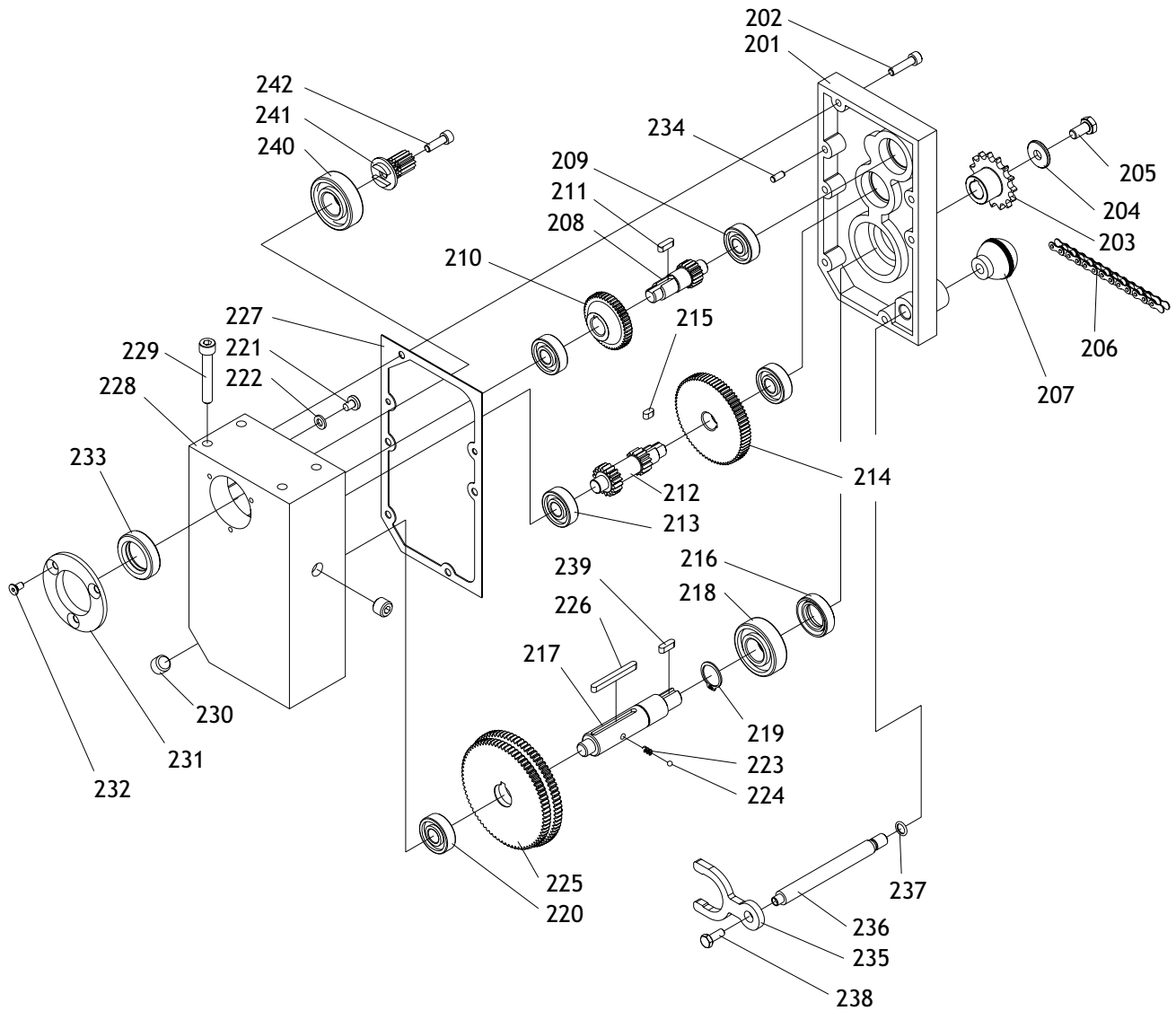


Headstock Parts List

REF	PART #	DESCRIPTION
101	X1742101	HANDLE
102	XPNO9M	HEX NUT M12-1.75
103	XPW06M	FLAT WASHER 12MM
105	X1742105	HANDWHEEL
106	X1742106	COLLAR
107	XPR29M	INT RETAINING RING 32MM
108	XP6201	BALL BEARING 6201
109	XPK48M	KEY 4 X 4 X 20
110	X1742110	WORM GEAR
111	X1742111	WORM HOUSING
112	X1742112	CAP SCREW M5-0.8 X 55
113	X1742113	ROLLER
114	X1742114	ROLLER STAND
115	XPSB52M	CAP SCREW M8-1.25 X 14
116	X1742116	BELT COVER
117	X1742117	FEMALE KNOB M8-1.25
118	XPFH02M	FLAT HD SCR M6-1 X 12
119	X1742119	DUST HOOD
120	XPSB14M	CAP SCREW M8-1.25 X 20
121	XPB04M	HEX BOLT M6-1 X 10
122	XPNO1M	HEX NUT M6-1
123	XPW03M	FLAT WASHER 6MM
124	X1742124	UPPER COVER
125	XPFB01M	FLANGE BOLT M6-1 X 12
126	X1742126	FOAM
127	X1742127	GEAR BOX COVER
128	XPVMX60	V-BELT MX-60
129	XPSB45M	CAP SCREW M8-1.25 X 45
130	XPRP07M	ROLL PIN 6 X 20
131	X1742131	SAFETY HATCH
132	X1742132	FLANGE BOLT M6-1 X 10
133	X1742133	IDLE BRACKET ASSY
133-1	X1742133-1	BRACKET
133-2	X1742133-2	IDLE PULLEY
133-3	X1742133-3	IDLE SHAFT
134	X1742134	SHAFT
135	X1742135	COLLAR
136	X1742136	EXTENSION SPRING
137	X1742137	HANGER
138	XPSB68M	CAP SCREW M6-1 X 8
139	X1742139	CHIP DEFLECTOR PLATE
140	XPFB01M	FLANGE BOLT M6-1 X 12
141	X1742141	PRESS PLATE
142	XPFB01M	FLANGE BOLT M6-1 X 12
143	X1742143	KNIFE SET OF THREE
144	X1742144	GIB PLATE
145	X1742145	GIB SCREW
146	X1742146	ADJUSTING NUT
147	X1742147	JACK SCREW M5-.8 X 16
148	X1742148	CUTTERHEAD
149	XPK09M	KEY 8 X 8 X 36

REF	PART #	DESCRIPTION
150	XP6205	BALL BEARING 6205
151	XPB83M	HEX BOLT M6-1 X 16
152	XPW03M	FLAT WASHER 6MM
153	X1742153	SPROCKET
154	X1742154	SCALE
155	XPW03M	FLAT WASHER 6MM
156	XPS14M	PHLP HD SCR M6-1 X 12
157	X1742157	POINTER
158	XPW03M	FLAT WASHER 6MM
159	XPS14M	PHLP HD SCR M6-1 X 12
160	X1742160	CUT LIMIT PLATE
161	XPS03M	PHLP HD SCR M6-1 X 8
162	X1742162	HEAD CASTING
163	X1742163	OUTFEED ROLLER
164	XPK08M	KEY 5 X 5 X 16
165	X1742165	COMPRESSION SPRING
166	X1742166	SPECIAL SET SCREW
167	X1742167	BUSHING
168	X1742168	PLATE
169	XPB03M	HEX BOLT M8-1.25 X 16
170	XPSS53M	SET SCREW M5-.8 X 12
171	XPNO6M	HEX NUT M5-0.8
172	X1742172	SHAFT
173	XPSS25M	SET SCREW M6-1 X 20
174	X1742174	CHIP BREAKER
175	XPSS58M	SET SCREW M6-1 X 18
176	XPNO1M	HEX NUT M6-1
177	X1742177	RECEIVER PIN
177-1	XPFB01M	FLANGE BOLT M6-1 X 12
178	X1742178	LOCKING ROD
179	XPR03M	EXT RETAINING RING 12MM
180	XPLW05M	LOCK WASHER 12MM
181	XPNO9M	HEX NUT M12-1.75
182	XPEC05M	E-CLIP 15MM
183	X1742183	COLLAR
184	X1742184	ANTI-KICKBACK FINGER
185	X1742185	SHAFT
186	XPSS06M	SET SCREW M8-1.25 X 16
187	XPB83M	HEX BOLT M6-1 X 16
188	XPW03M	FLAT WASHER 6MM
189	X1742189	SPROCKET
190	X1742190	CHAIN 06B-1 X 63
191	XPK08M	KEY 5 X 5 X 16
192	X1742192	INFEED ROLLER
193	XPW03M	FLAT WASHER 6MM
194	XPB02M	HEX BOLT M6-1 X 12
195	X1742195	CUTTERHEAD PULLEY
196	X1742196	MOTOR PULLEY
197	X1742197	COLLAR
198	XPB09M	HEX BOLT M8-1.25 X 20
199	X1742199	BELT GUARD

Gearbox Diagram

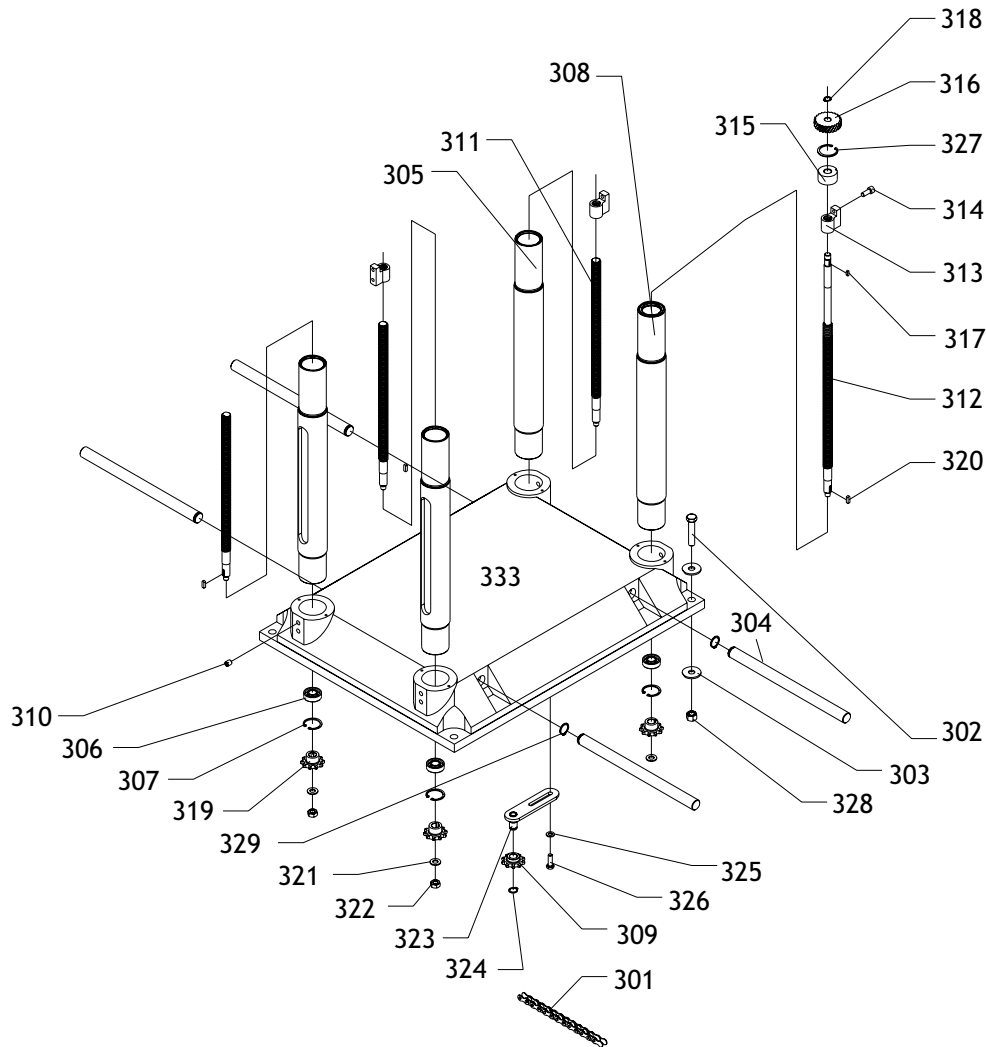


Gearbox Parts List

REF	PART #	DESCRIPTION
201	X1742201	GEAR BOX
202	XPB10M	HEX BOLT M6-1 X 25
203	X1742203	SPROCKET
204	XPW03M	FLAT WASHER 6MM
205	XPB03M	HEX BOLT M8-1.25 X 16
206	X1742206	CHAIN 06B-1 X 51
207	X1742207	FEMALE KNOB M8-1.25
208	X1742208	SHAFT
209	XP6201	BALL BEARING 6201
210	X1742210	GEAR
211	XPB19M	KEY 5 X 5 X 14
212	X1742212	SHAFT
213	XP6201	BALL BEARING 6201
214	X1742214	GEAR
215	XPB06M	KEY 5 X 5 X 10
216	X1742216	OIL SEAL 25 X 32 X 7
217	X1742217	SHAFT
218	XP6204	BALL BEARING 6204
219	XPR09M	EXT RETAINING RING 20MM
220	XP6201	BALL BEARING 6201
221	XPS03M	PHLP HD SCR M6-1 X 8

REF	PART #	DESCRIPTION
222	XPW03M	FLAT WASHER 6MM
223	X1742223	COMPRESSION SPRING
224	X1742224	STEEL BALL 4MM
225	X1742225	GEAR
226	XPB36M	KEY 5 X 5 X 50
227	X1742227	GASKET
228	X1742228	GEAR BOX COVER
229	XPB22M	HEX BOLT M8-1.25 X 50
230	X1742230	OIL PLUG
231	X1742231	FLANGE COVER
232	XPSB33M	CAP SCREW M5-.8 X 12
233	X1742233	OIL SEAL 25 X 40 X 10
234	XPRP35M	PIN 5 X 10
235	X1742235	SHIFT FORK
236	X1742236	HANDLE SHAFT
237	X1742237	O-RING 16 X 2.4
238	XPFB01M	FLANGE BOLT M6-1 X 12
239	XPB08M	KEY 5 X 5 X 16
240	XP6204	BALL BEARING 6204
241	X1742241	GEAR
242	XPSS25M	SET SCREW M6-1 X 20

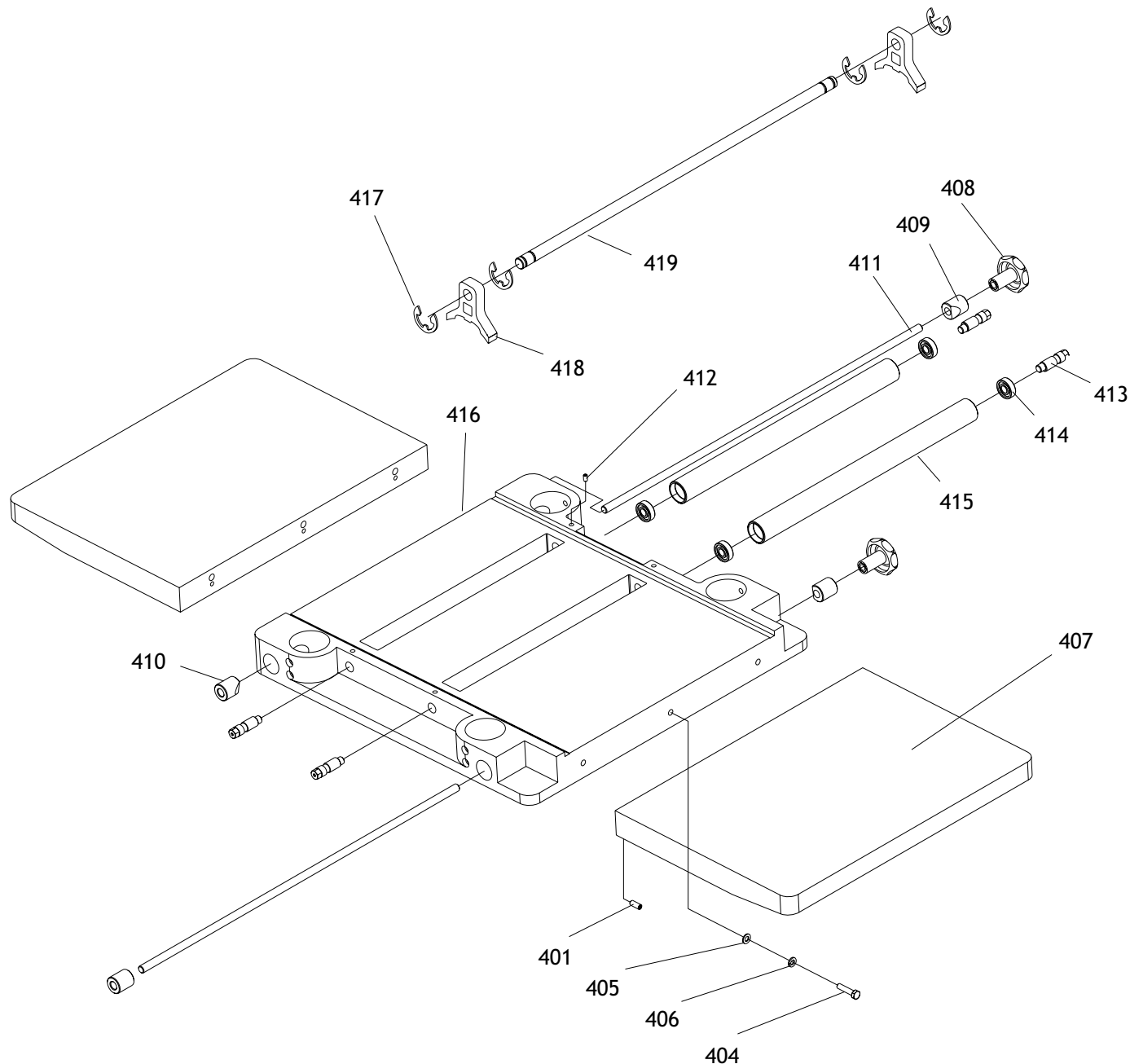
Lower Table Diagram & Parts List



REF	PART #	DESCRIPTION
301	X1742301	CHAIN 12.7 AX 134
302	XPB24M	HEX BOLT M12-.175 X 45
303	XPW06M	FLAT WASHER 12MM
304	X1742304	LIFTING BAR
305	X1742305	COLUMN
306	XP6302	BALL BEARING 6302
307	XPR24M	INT RETAINING RING 42MM
308	X1742308	COLUMN
309	X1742309	SPROCKET
310	XPSS13M	SET SCREW M10-1.5 X 12
311	X1742311	LEAD SCREW
312	X1742312	LEAD SCREW
313	X1742313	LEAD NUT
314	XPSB02M	CAP SCREW M6-1 X 20
315	X1742315	BUSHING

REF	PART #	DESCRIPTION
316	X1742316	GEAR
317	XPB69M	KEY 4 X 4 X 12
318	XPR03M	EXT RETAINING RING 12MM
319	X1742319	SPROCKET
320	XPB08M	KEY 5 X 5 X 16
321	XPW04M	FLAT WASHER 10MM
322	XPB02M	HEX NUT M10-1.5
323	X1742323	BRACKET
324	XPR05M	EXT RETAINING RING 15MM
325	XPW01M	FLAT WASHER 8MM
326	XPB09M	HEX BOLT M8-1.25 X 20
327	XPR23M	INT RETAINING RING 40MM
328	XPB09M	HEX NUT M12-1.75
329	XPR05M	EXT RETAINING RING 15MM
333	X1742333	BASE

Upper Table Diagram & Parts List



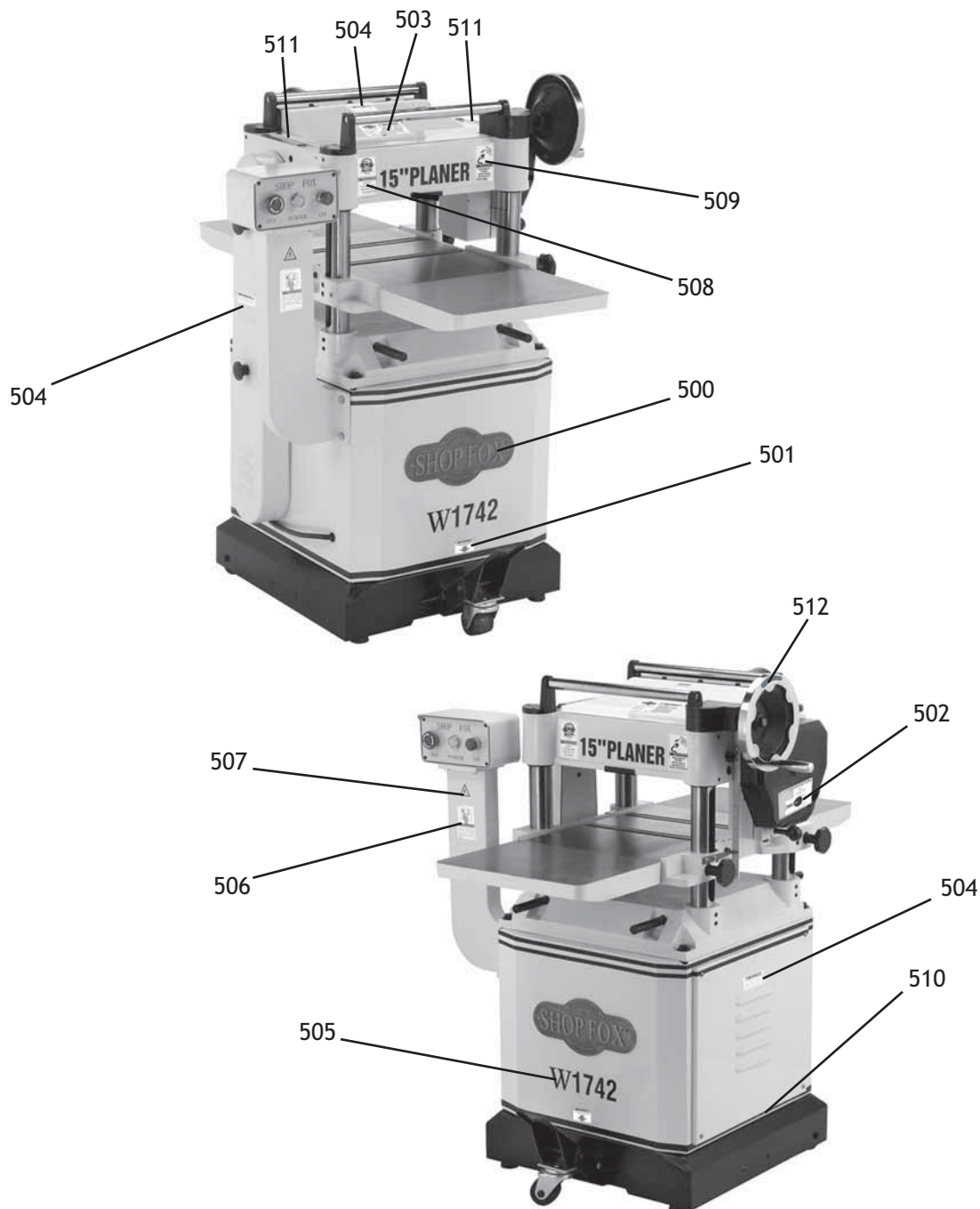
REF	PART #	DESCRIPTION
401	XPSS09M	SET SCREW M8-1.25 X 20
404	XPB26M	HEX BOLT M8-1.25 X 30
405	XPW01M	FLAT WASHER 8MM
406	XPLW04M	LOCK WASHER 8MM
407	X1742407	EXTENSION WING
408	X1742408	FEMALE KNOB M12-1.75
409	X1742409	WEDGE DOG
410	X1742410	GIB
411	X1742411	LOCK BAR

REF	PART #	DESCRIPTION
412	XPSS11M	SET SCREW M6-1 X 16
413	X1742413	ECCENTRIC SHAFT
414	XP6203	BALL BEARING 6203
415	X1742415	ROLLER
416	X1742416	TABLE/BED
417	XPR39M	EXT RETAINING RING 8MM
418	X1742418	SADDLE
419	X1742419	ROD

Label Placement

!WARNING

Safety labels warn about machine hazards and ways to prevent injury. The owner of this machine **MUST** maintain the original location and readability of the labels on the machine. If any label is removed or becomes unreadable, **REPLACE** that label before using the machine again. Contact Woodstock International, Inc. at (360) 734-3482 or www.shopfoxtools.com to order new labels.



Label List

REF	PART #	DESCRIPTION
500	X1742500	SHOP FOX LOGO PLATE
501	X1742501	LOCK BASE LABEL
502	X1742502	SHIFT GEARS LABEL
503	X1742503	DATA LABEL
504	X1742504	KEEP CLOSED LABEL
505	X1742505	W1742 LABEL
506	X1742506	READ MANUAL LABEL

REF	PART #	DESCRIPTION
507	X1742507	ELECTRICTY LABEL
508	X1742508	DUST/EYE WARNING LABEL
509	X1742509	UNPLUG LABEL
510	X1742510	PINSTRIPLE TAPE
511	X1742511	OIL HERE LABEL
512	X1742512	ROTATION LABEL