



MODEL W1735 PORTABLE DUST COLLECTOR



INSTRUCTION MANUAL

Phone: 1-360-734-3482 • On-Line Technical Support: tech-support@shopfox.biz

COPYRIGHT © AUGUST, 2004 BY WOODSTOCK INTERNATIONAL, INC.

**WARNING: NO PORTION OF THIS MANUAL MAY BE REPRODUCED IN ANY SHAPE OR FORM WITHOUT
THE WRITTEN APPROVAL OF WOODSTOCK INTERNATIONAL, INC.**

WARNING

Some dust created by power sanding, sawing, grinding, drilling, and other construction activities contains chemicals known to the State of California to cause cancer, birth defects or other reproductive harm. Some examples of these chemicals are:

- Lead from lead-based paints.
- Crystalline silica from bricks, cement, and other masonry products.
- Arsenic and chromium from chemically treated lumber.

Your risk from these exposures varies, depending on how often you do this type of work. To reduce your exposure to these chemicals: work in a well ventilated area, and work with approved safety equipment, such as those dust masks that are specially designed to filter out microscopic particles.

Table of Contents

INTRODUCTION	2
Woodstock Technical Support	2
About Your New Dust Collector	2
Specifications	2
Controls and Features	3
SAFETY	4
Standard Safety Instructions	4
Additional Safety Instructions for Dust Collectors	6
Avoiding Potential Injuries	7
ELECTRICAL	8
110V Operation	8
220V Operation	8
Circuit Load	9
Extension Cords	9
Grounding	9
SET UP	10
Unpacking	10
Inventory	10
Machine Placement	11
Casters	11
Collection Bag	11
Dust Hose	12
Dust Nozzle	12
OPERATIONS	13
General	13
Operation	13
Accessories	14
MAINTENANCE	15
General	15
Collector Bag Cleaning	15
Machine Cleaning	15
Lubrication	15
SERVICE	16
General	16
Rewiring for 220V	16
110V Wiring Diagram (Prewired)	17
220V Wiring Diagram	18
Troubleshooting	19
W1735 Parts Breakdown	20
W1735 Parts List	21
WARRANTY	22

USE THE QUICK GUIDE PAGE LABELS TO SEARCH OUT INFORMATION FAST!





INTRODUCTION

Woodstock Technical Support

We stand behind our machines! In the event that a defect is found, parts are missing or questions arise about your machine, please contact Woodstock International Technical Support at 1-360-734-3482 or send e-mail to: tech-support@shopfox.biz. Our knowledgeable staff will help you troubleshoot problems, send out parts or arrange warranty returns.

If you need the latest edition of this manual, you can download it from <http://www.shopfox.biz>. If you still have questions after reading the latest manual, or if you have comments please contact us at:

Woodstock International, Inc.
Attn: Technical Support Department
P.O. Box 2309
Bellingham, WA 98227

About Your New Dust Collector

Your new **SHOP FOX®** 3/4 HP Portable Dust Collector has been specially designed to provide many years of trouble-free service. Close attention to detail, ruggedly built parts and a rigid quality control program assure safe and reliable operation.

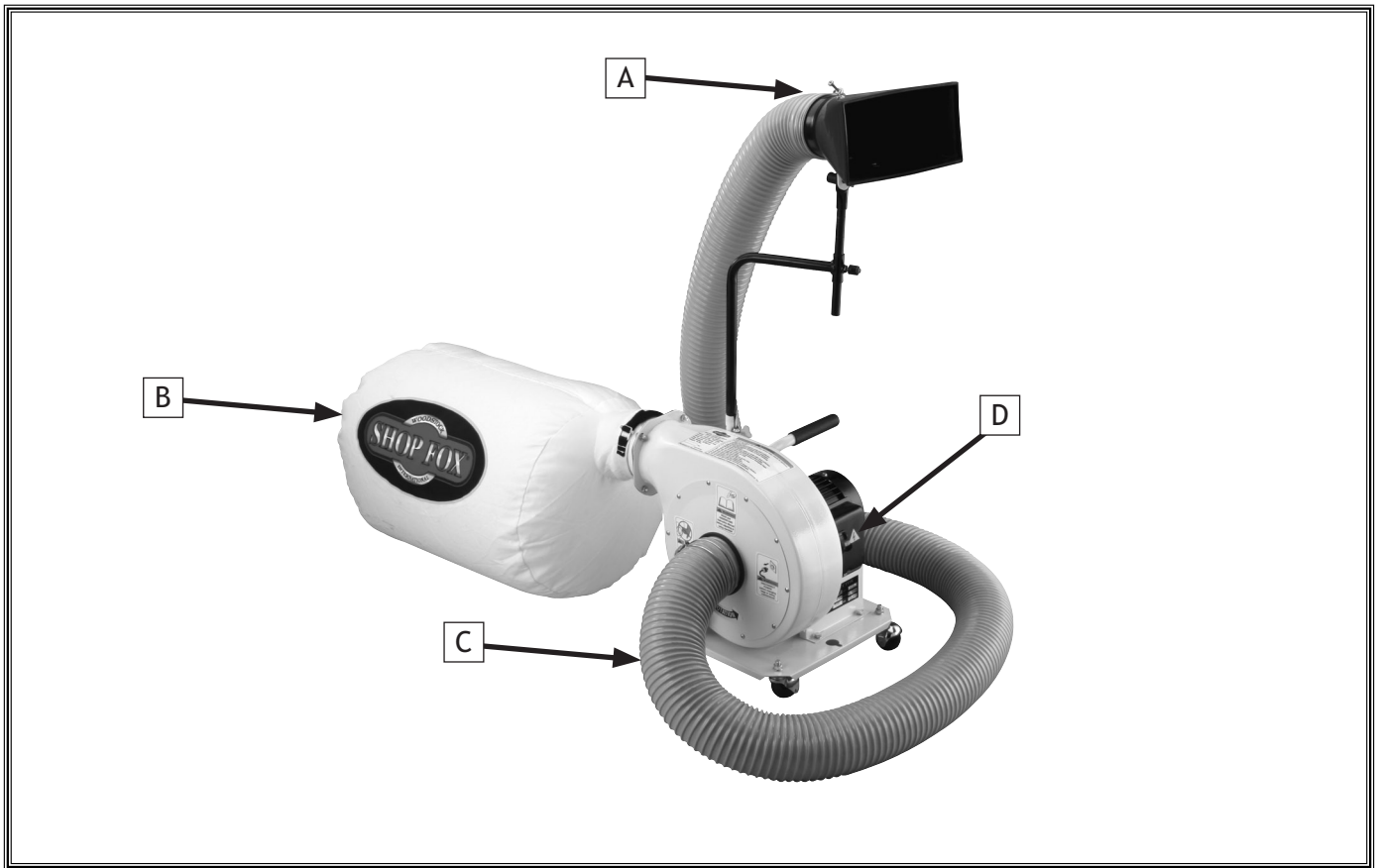
This dust collector allows you the power and quiet operation of a dust collector with the portability of a wet/dry vacuum.

Woodstock International, Inc. is committed to customer satisfaction in providing this manual. It is our intent to make sure all the information necessary for safety, ease of assembly, practical use and durability of this product be included.

Specifications

Motor	3/4 HP, 110/220V, 3450 RPM
Amps.....	9/4.5
Suction Capacity	650 CFM
Static Pressure Rating (inches of water)	3.4"
Impeller Size	9"
Impeller Construction	Aluminum
Filter	30 Micron
Inlet Size	4"
Bag Capacity	2.8 Cubic Feet
Overall Size	46" W x 18" D x 43-1/2" H
Approximate Machine Weight	42 lbs.

Controls and Features



- A. **Dust Nozzle**—Optional dust collection port for use with machinery without a built-in dust port, or can be used in addition to the built-in dust port to collect leftover dust.
- B. **Collection Bag**—Stores collected dust and filters the air down to 30 microns as it is expelled from the dust collector.
- C. **4" Dust Hose**—Included with dust collector for use with machines with built-in dust ports or the included dust nozzle.
- D. **ON/OFF Lockout Switch w/Key**—Allows you to lock-out the dust collector to prevent unsupervised use.

SAFETY

**READ MANUAL BEFORE OPERATING MACHINE.
FAILURE TO FOLLOW INSTRUCTIONS BELOW WILL
RESULT IN PERSONAL INJURY.**



Indicates an imminently hazardous situation which, if not avoided, **WILL** result in death or serious injury.



Indicates a potentially hazardous situation which, if not avoided, **COULD** result in death or serious injury.



Indicates a potentially hazardous situation which, if not avoided, **MAY** result in minor or moderate injury.

NOTICE

This symbol is used to alert the user to useful information about proper operation of the equipment, and/or a situation that may cause damage to the machinery.

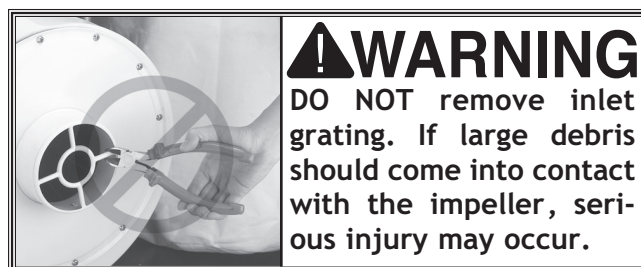
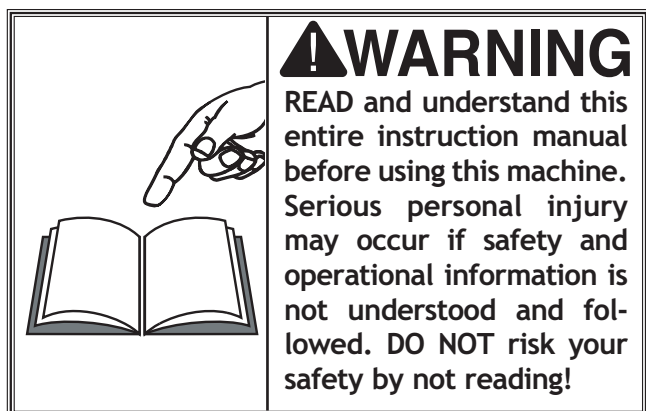
Standard Safety Instructions

1. **Thoroughly read the Instruction Manual before operating your machine.** Learn the applications, limitations and potential hazards of this machine. Keep the manual in a safe and convenient place for future reference.
2. **Keep work area clean and well lighted.** Clutter and inadequate lighting invite potential hazards.
3. **Ground all tools.** If a machine is equipped with a three-prong plug, it must be plugged into a three-hole grounded electrical receptacle or grounded extension cord. If using an adapter to aid in accommodating a two-hole receptacle, ground using a screw to a known ground.
4. **Wear eye protection at all times.** Use safety glasses with side shields or safety goggles that meet the appropriate standards of the American National Standards Institute (ANSI).
5. **Avoid dangerous environments.** Do not operate this machine in wet or open flame environments. Airborne dust particles could cause an explosion and severe fire hazard.
6. **Ensure all guards are securely in place** and in working condition.
7. **Make sure switch is in the OFF position** before connecting power to machine.
8. **Keep work area clean**, free of clutter, grease, etc.
9. **Keep children and visitors away.** Visitors must be kept at a safe distance while operating unit.
10. **Childproof your workshop** with padlocks, master switches or by removing starter keys.
11. **Stop and disconnect the machine when cleaning, adjusting or servicing.**

12. **Do not force tool.** The machine will do a safer and better job at the rate for which it was designed.
13. **Use correct tool.** Do not force machine or attachment to do a job for which it was not designed.
14. **Wear proper apparel.** Do not wear loose clothing, neck ties, gloves, jewelry, and secure long hair away from moving parts.
15. **Remove adjusting keys, rags, and tools.** Before turning the machine on, make it a habit to check that all adjusting keys and wrenches have been removed.
16. **Avoid using an extension cord.** But if you must use one, examine the extension cord to ensure it is in good condition. The amp rating of the motor can be found on its nameplate. If the motor is dual voltage, be sure to use the amp rating for the voltage you will be using. If you use an extension cord with an undersized gauge or one that is too long, excessive heat will be generated within the circuit, increasing the chance of a fire or damage to the circuit. Always use an extension cord that uses a ground pin and connected ground wire. Immediately replace a damaged extension cord.
17. **Keep proper footing and balance** at all times.
18. **Do not leave machine unattended.** Wait until it comes to a complete stop before leaving the area.
19. **Perform machine maintenance and care.** Follow lubrication and accessory attachment instructions in the manual.
20. **Keep machine away from open flame.** Operating machines near pilot lights or open flames creates a high risk if dust is dispersed in the area. Dust particles and an ignition source may cause an explosion. Do not operate the machine in high-risk areas, including but not limited to, those mentioned above.
21. **If at any time you are experiencing** difficulties performing the intended operation, stop using the machine! Then contact our technical support or ask a qualified expert how the operation should be performed.
22. **Habits—good and bad—are hard to break.** Develop good habits in your shop and safety will become second-nature to you.

Additional Safety Instructions for Dust Collectors

SAFETY



1. **WOOD DUST ONLY.** Never use your dust collector for anything except wood dust. Materials such as liquids, metal shavings, metal dust, screws, glass, plastic, or rocks can cause sparks when coming into contact with any part of the collection system. Sparks combined with sawdust and the breeze from the impeller can ignite easily.
2. **UNPLUG BEFORE SERVICING.** Always turn off and unplug the dust collector, and allow the impeller to come to a complete stop before emptying the dust bags, moving the dust collector, or removing ducting.
3. **WORKING NEAR INLET.** Never place your hands near the inlet opening while the machine is running or connected to power.
4. **RESPIRATOR REQUIRED DURING OPERATION.** Always wear an approved respirator during dust collector use, the bag filter is not a safe substitute for a respirator.
5. **RESPIRATOR REQUIRED WHEN REMOVING BAGS.** Always wear an approved respirator and safety glasses when removing, emptying or replacing collection bags. Secure the bags tightly to the dust collector to avoid the bags from blowing off.
6. **UNATTENDED DUST COLLECTOR.** Never leave the dust collector running while unattended.
7. **EXPERIENCING DIFFICULTIES.** If at any time you are experiencing difficulties performing the intended operation, stop using the machine! Then contact our technical support or ask a qualified expert for solutions.
8. **GROUNDING PLASTIC DUST HOSES AGAINST STATIC ELECTRICITY.** Plastic dust hoses create static electricity during operation. The longer the hose, the stronger the potential buildup of a charge. Running bare 12 ga. copper wire along all plastic hoses, fittings, and blast gates and connecting the wire to the metal frame of machines will help reduce the occurrence of static build up and discharge.
9. **OPERATING IN FLAMMABLE ENVIRONMENTS.** Fine dust sawdust particles are extremely flammable and can easily ignite. Never operate the dust collector in a room with an open flame/pilot light.
10. **ALLERGIC REACTION TO WOOD DUST.** Be aware that certain woods may cause an allergic reaction in people and animals, especially when exposed to fine dust. Make sure you know what type of wood dust you will be exposed to and the possibility of a allergic reaction. Always wear an approved respirator when operating this machine.

Avoiding Potential Injuries



Figure 1. Never collect anything except wood dust!



Figure 4. Unplug the dust collector when cleaning bag.

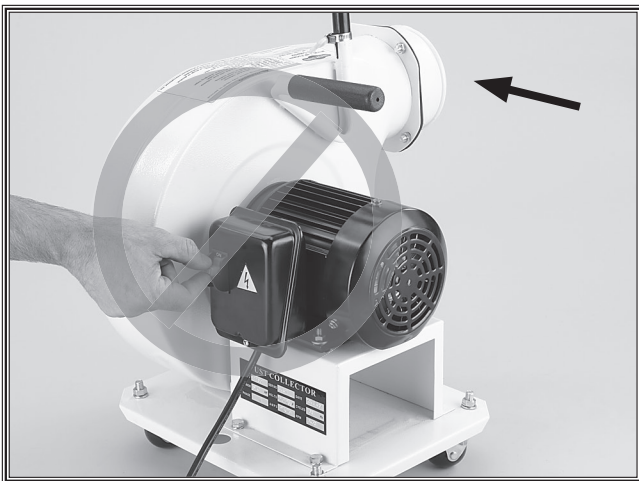


Figure 2. Never operate without bag installed.



Figure 5. Wear a respirator and safety glasses when cleaning bag.

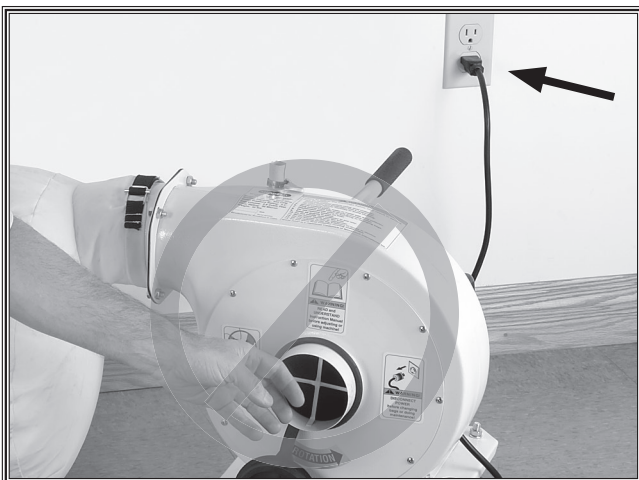


Figure 3. Keep hands away from inlet when connected to power.



Figure 6. Remove lockout key when not in use.

ELECTRICAL

110V Operation

The **SHOP FOX®** W1735 is prewired for 110 volt operation. The motor supplied with your new dust collector is rated at 3/4 HP and will draw approximately 9 amps. A 5-15 plug is included for your machine and is intended to be plugged into a matching 5-15 receptacle (**Figure 7**). When choosing a receptacle for this machine, use one with a 15 amp circuit breaker or fuse to protect yourself.

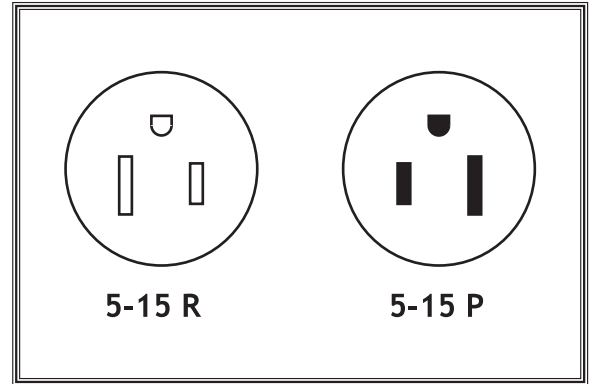


Figure 7. Typical 110V 3-prong plug and outlet.

220V Operation

The **SHOP FOX®** W1735 can be rewired for 220 volt operation. When rewired for 220V, the motor will draw approximately 4.5 amps. If you are converting your machine to 220V, you must replace the 5-15 plug with a 6-15 plug and install a 6-15 receptacle (**Figure 8**) on a 15 amp circuit breaker or fuse to protect yourself. See *Rewiring for 220V* on **page 16** for complete details.

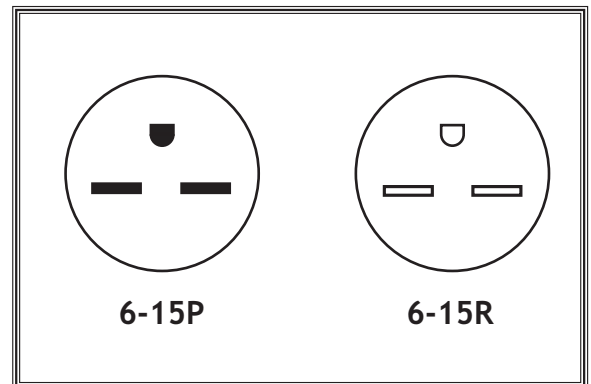


Figure 8. Typical 220V 6-15 plug and outlet.

Circuit Load

A circuit being used by other machines or tools at the same time will add to the total load being applied to the circuit. Add up the load ratings of all machines on the circuit. If this number exceeds the rating of the circuit breaker or fuse, use a different circuit.

Extension Cords

When it is necessary to use an extension cord, use the following guidelines:

- Use cords rated for Standard Service.
- Only use cords 50 ft. long or less.
- Use cords with 14 ga. wire or bigger.
- Ensure cord has a ground wire and pin.

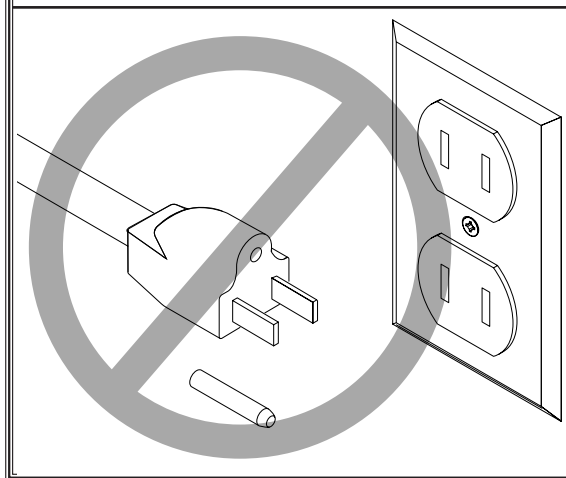
Grounding

This machine must be grounded! The plug attached to the electrical cord supplied with this machine comes with a grounding pin. Do not remove it. If your outlet does not accommodate a ground pin, have it replaced by a qualified electrician or have an appropriate adapter installed.

Note: When using an adapter, the adapter must be grounded.

WARNING

This equipment must be grounded. Verify that any existing electrical outlet and circuit you intend to plug into is actually grounded. If it is not, it will be necessary to run a separate 12 AWG copper grounding wire from the outlet to a known ground. Under no circumstances should the grounding pin from any three-pronged plug be removed or serious injury may occur.



SET UP

Unpacking

The **SHOP FOX®** Model W1735 has been carefully packaged for safe transporting. If you notice the machine has been damaged, please contact Woodstock International Technical Support at 1-360-734-3482 or send e-mail to: tech-support@shopfox.biz

Inventory

The following is a description of the main components shipped with the **SHOP FOX®** Model W1735. You should lay the components out to easily identify them.

Box Contents (Figures 9 and 10)

A.	Dust Collector Unit.....	1
B.	Swivel Casters.....	4
C.	Dust Collection Hose 4" x 10'	1
D.	Inlet Cap	1
E.	Dust Collection Nozzle.....	1
F.	Support Brace	1
G.	Upper Support Tube	1
H.	Lower Support Tube	1
I.	Collection Bag.....	1
J.	Collection Bag Adapter	1
K.	Gasket.....	1
L.	Hardware Bag	1
	• Hex Nuts 3/8"-16	4
	• Lock Washers 3/8".....	4
	• Carriage Bolts 5/16"-18 x 3/4"	2
	• Lock Washers 5/16"	3
	• Hex Nuts 5/16"-18	6
	• Adjustable Lock Lever 5/16"-18 x 1"	1
	• T-Knob Bolt 5/16"-18 x 5/8"	1
	• Support Tube Clamp	1
	• Hose Clamps.....	2
	• Hex Bolt 5/16"-18 x 5/8"	4

Should any part be missing, examine the packaging carefully to be sure those parts are not among the packing materials. If any parts are missing, find the part number in the back of this manual and contact Woodstock International, Inc. at 360-734-3482 or at tech-support@shopfox.biz

!WARNING



READ and understand this entire instruction manual before using this machine. Serious personal injury may occur if safety and operational information is not understood and followed. DO NOT risk your safety by not reading!

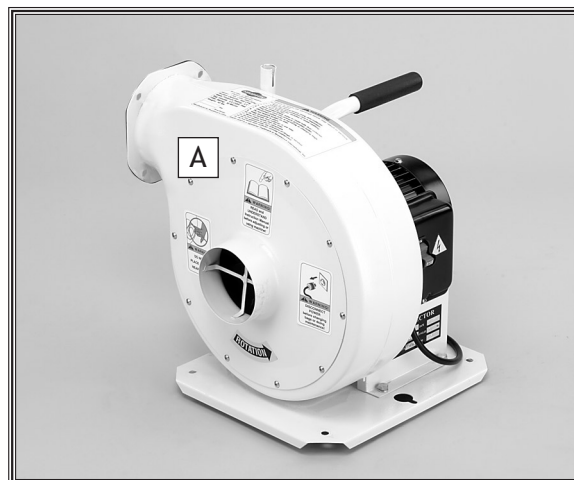


Figure 9. Dust collector unit.

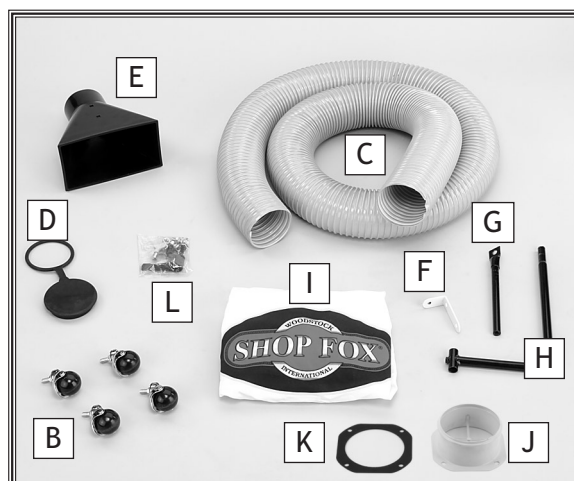


Figure 10. Dust collector package inventory.

Machine Placement

- **Working Clearances:** Consider existing and anticipated needs, size of material to be processed through the machine, and space for auxiliary stands, work tables or other machinery when establishing a location for your dust collector.
- **Lighting:** Lighting should be bright enough to eliminate shadow and prevent eye strain.
- **Electrical:** Electrical circuits must be dedicated or large enough to handle amperage requirements. Outlets should be located near each machine, so power or extension cords are clear of high-traffic areas. Follow local electrical codes for proper installation of new lighting, outlets, or circuits.

Casters

A 14mm wrench or socket is needed to install the swivel casters to the dust collector base.

To install the swivel casters, do these steps:

1. Lay the dust collector on its side.
2. Insert the swivel casters into the base and secure in place with four 3/8" hex nuts and lock washers.

Collection Bag

The collection bag attaches to the dust collector outlet with the collection bag adapter and has a built-in cinch strap for securing it onto the outlet port.

To install the collection bag, do these steps:

1. Using the 5/16" hex bolts and hex nuts, mount the collection bag adapter to the outlet with the gasket between the assembly.
2. Fit the collection bag opening over the outlet and pull the strap tight, as shown in **Figure 12**. The strap should remain tight after being snugged. If the strap does not stay tight, it is fed through the tightening mechanism improperly.

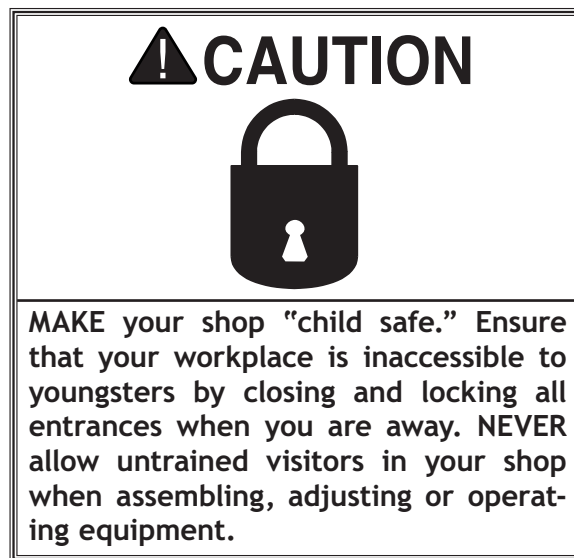


Figure 11. Swivel casters installed on dust collector base.



Figure 12. Tightening the collection bag on the outlet port.

Dust Hose

To install the dust hose, do these steps:

1. Slide a hose clamp onto the end of the dust hose.
2. Push the dust hose over the inlet and secure in place with the hose clamp (**Figure 13**).
3. Connect the other end of the hose to the dust port on your machine or to the included dust nozzle.

Dust Nozzle

The dust nozzle is typically used for benchtop cutting or sanding operations, for machines that do not have a built-in dust collection system, and to supplement machines that do have a built-in dust collection. If you plan on connecting your new dust collector directly to a built-in dust port on a machine, then skip this section or just assemble the dust nozzle and do not hook it up.

A 12mm wrench or socket is needed to install the dust nozzle to the intake support brace.

To install the dust nozzle, do these steps:

1. Attach the upper support tube to the support bracket with the adjustable lock lever from the hardware bag, as shown in **Figure 14**.
2. Attach the support bracket to the dust nozzle with two 5/16" carriage bolts, lock washers, and hex nuts; with the carriage bolt heads inside the nozzle.
3. Place the support tube clamp on the bottom end of the lower support tube and insert the lower support tube into the sleeve near the top of the dust collector.
4. Tighten the tube clamp around the top of the sleeve that the lower support tube fits inside of.
5. Insert the upper support tube (with the nozzle assembly) into the lower support tube.
6. Secure the upper support tube with the knob bolt from the hardware bag.
7. Connect the dust collection hose to the end of the dust nozzle and secure with the hose clamp. The final assembly should look like **Figure 15**.



Figure 13. Dust hose attached to inlet.



Figure 14. Upper support tube attached to support bracket with lock lever.



Figure 15. Dust nozzle correctly installed on dust collector unit.

OPERATIONS

General

We strongly recommend that you read books, trade articles or seek training with the proper use of dust collectors. **Above all, your safety should come first.** This recommended research will pay off with your increased safety and better results from your machine. For in-depth information, refer to *The Dust Collection Handbook* (ISBN 0-9635821-2-7).

Operation

This dust collector is primarily intended for the collecting dust from one machine at a time. This dust collector is NOT intended to power a whole-shop dust collection system. For best results from your new dust collector, please follow the rules below:

- DO NOT collect metal pieces, glass, or liquid with this dust collector—It is intended for collecting wood dust only. Metal pieces may spark when they contact the impeller and cause a fire.
- DO NOT use a hose longer than the included 10' hose. Longer hoses will decrease the efficiency of the dust collector.
- DO NOT use 90° or 45° elbows, blast gates, or dust separators (cyclone-type) with this dust collector. These fittings will decrease the overall efficiency of the dust collector. However, a quick disconnect fitting can be used with minimal loss of efficiency.
- Ground your dust collection hose to protect against unpleasant static shock, and in the worst case, an accidental fire. Do this by running copper wire on both the inside and outside of the dust collection hose. Attach one end of the wire to the metal frame of the dust collector (see **Figure 16**) and the other end to the metal frame of the machine you are collecting dust from (see **Figure 17**) to ensure that the dust hose is grounded.

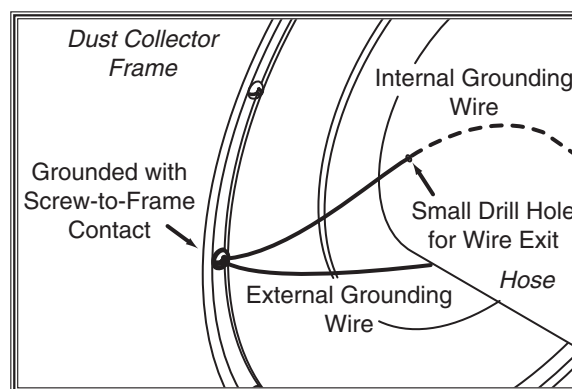
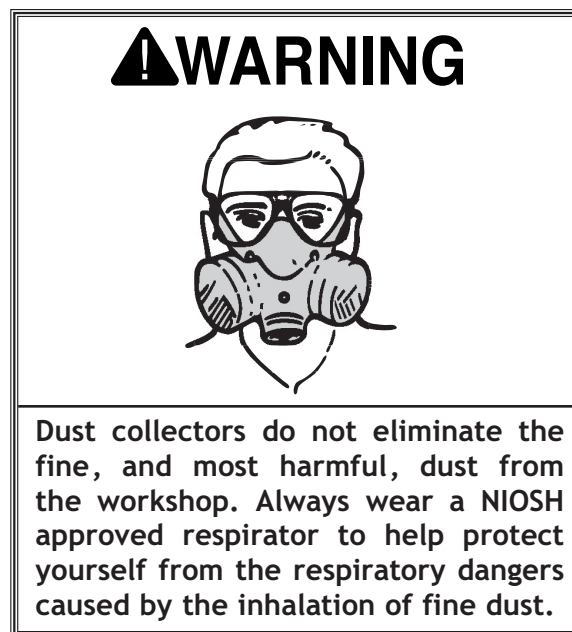


Figure 16. Grounding diagram for dust collector.

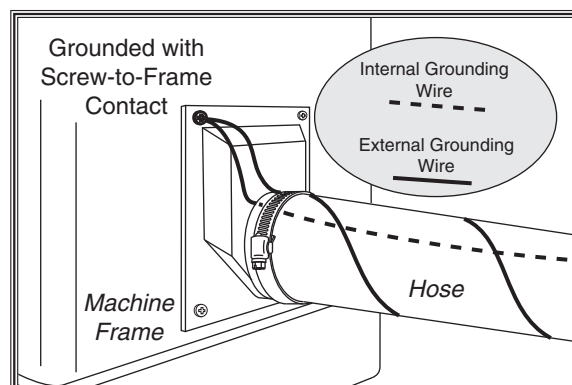


Figure 17. Grounding diagram for attached machine.

Accessories

Because of the small size of the Model W1735, not all dust collection accessories that fit will work efficiently. Below are some of the accessories that work well with this dust collector.

Quick Disconnect (Model W1038)

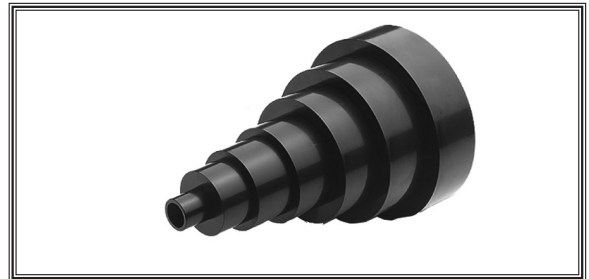
This is the perfect accessory for those who will use the dust collector for multiple machines. The quick disconnect is designed attach to a 4" hose and press-on to any 4" diameter dust port. The quick disconnect works with a friction fit to eliminate constant tightening/loosening hose clamps.

If you do not have a dealer in your area, these products are also available through online dealers. Please call or e-mail Woodstock International Inc. Customer Service to get a current listing of dealers at: 1-800 840-8420 or at sales@woodstockint.com.



Universal Adapter (Model W1039)

Providing options for seven different sizes, this universal adapter allows you to connect your dust collector to machines with smaller dust ports than 4". This is a "must-have" for miter saws or when connecting your dust collector to common vacuum hoses.



Remote Switch (Model D3038 110V or D3346 220V)

Turn your dust collector on or off from up to 75 feet away. The D3038 remote switch controls 110V-20A dust collectors up to 1-1/2 HP, and the D3346 remote switch controls 220V-20A dust collectors up to 3 HP. Each unit comes with two hand-held remote controllers.



Grounding Kit (Model W1053)

All dust collectors generate static electricity in the ducting system. If a series of conditions are in place, and the dust collection ducting is not grounded, a spark from static electricity buildup could ignite the fine wood dust particles in the dust collector. To reduce this ignition hazard, install a grounding kit.



Deluxe Ceiling Mounted Air Cleaner (Model W1690)

Air cleaners are a great solution for removing airborne dust particles. This air cleaner has three speeds (556, 702, and 1,044 CFM) and a primary and secondary filter to remove dust particles as small as 1 micron. Install this air cleaner on a work bench, on a wall, or suspend it from your shop ceiling.



MAINTENANCE

General

Regular periodic maintenance on your **SHOP FOX®** Model W1735 will ensure its optimum performance. Make a habit of inspecting your dust collector each time you use it.

Check for the following conditions and repair or replace when necessary:

- Loose mounting bolts.
- Worn or damaged switch, cords, and plugs.
- Any other condition that could hamper the safe operation of this machine.
- Loud rubbing, vibration or tapping noises coming from motor or impeller housing.

Collector Bag Cleaning

The collector bag is intended to be cleaned by simply emptying it.

To clean the collector bag, do these steps:

1. Loosen the strap that secures the collector bag to the outlet (see **Figure 18**), and remove the bag from the dust collector.
2. Unzip the back of the collector bag, and gently shake the collector bag to empty the sawdust.
3. Zip the bag up and replace it on the dust collector.

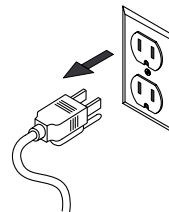
Machine Cleaning

Blow-off sawdust with compressed air. Dust build-up around the motor is a sure way to decrease its life span. *Always wear a respirator when removing sawdust with compressed air!*

Lubrication

Since all bearings are sealed and permanently lubricated, simply leave them alone until they need to be replaced. Do not lubricate them.

WARNING



MAKE SURE that your machine is unplugged during all maintenance procedures! If this warning is ignored, serious personal injury may occur.

WARNING



Emptying the collector bag exposes you to harmful dust. Always wear a respirator when emptying the collector bag!



Figure 18. Loosening strap on collector bag.

SERVICE

General

This section covers the most common service adjustments or procedures that may need to be made during the life of your machine.

If you require additional machine service not included in this section, please contact Woodstock International Technical Support at (360) 734-3482 or send e-mail to: tech-support@shopfox.biz.

Rewiring for 220V

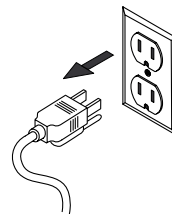
If you want to run your dust collector on 220V, then it must be rewired inside the switch box and a new plug must be installed on the machine. The rewiring job must be inspected by a qualified electrician before the machine is reconnected to a power source. Please read the **ELECTRICAL** section on **Page 8** before beginning this procedure.

To rewire your dust collector for 220V operation, do these steps:

1. **UNPLUG THE DUST COLLECTOR!**
2. Open the switch box cover by removing the screw that secures it, as shown in **Figure 19**.
3. Rewire the wires inside the switch box according to the 220V diagram shown on the inside cover of the switch box.
4. After rewiring, make sure the wire nuts are tight and are secured in place with electrical tape.
5. Install a 220V plug (we recommend using a 6-15 plug) according to the manufacturer's instructions.
6. Have your wiring job inspected by a qualified electrician, and replace the switch box wiring cover.

Note: Refer to the **220V Wiring Diagram** on **Page 18** or contact our technical support personnel if you need additional help with this procedure.

! WARNING

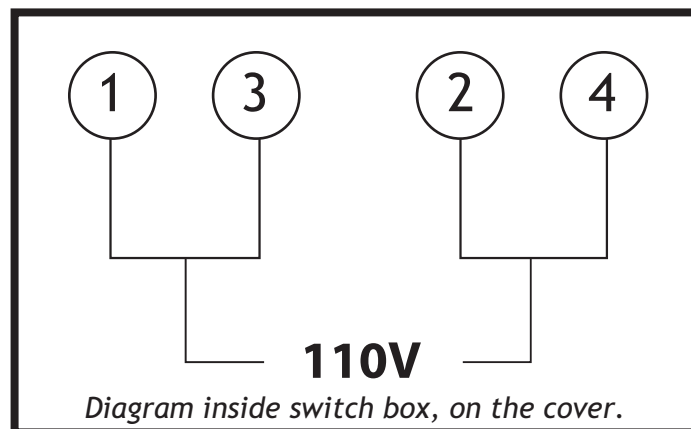
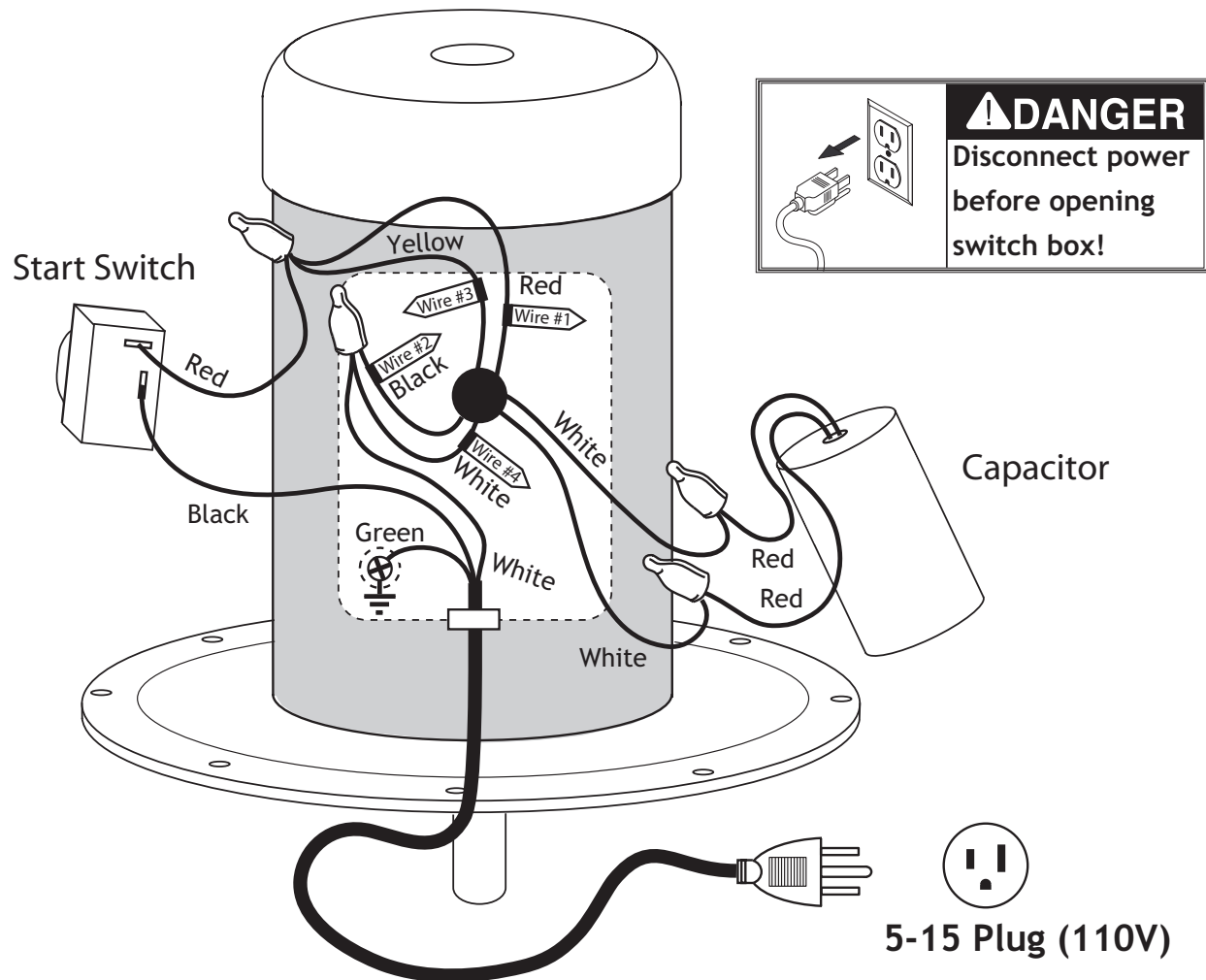


MAKE SURE that your machine is unplugged during all service procedures! If this warning is ignored, serious personal injury may occur.

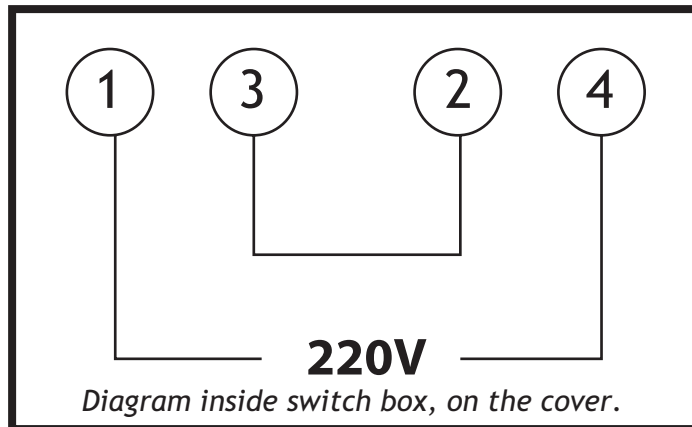
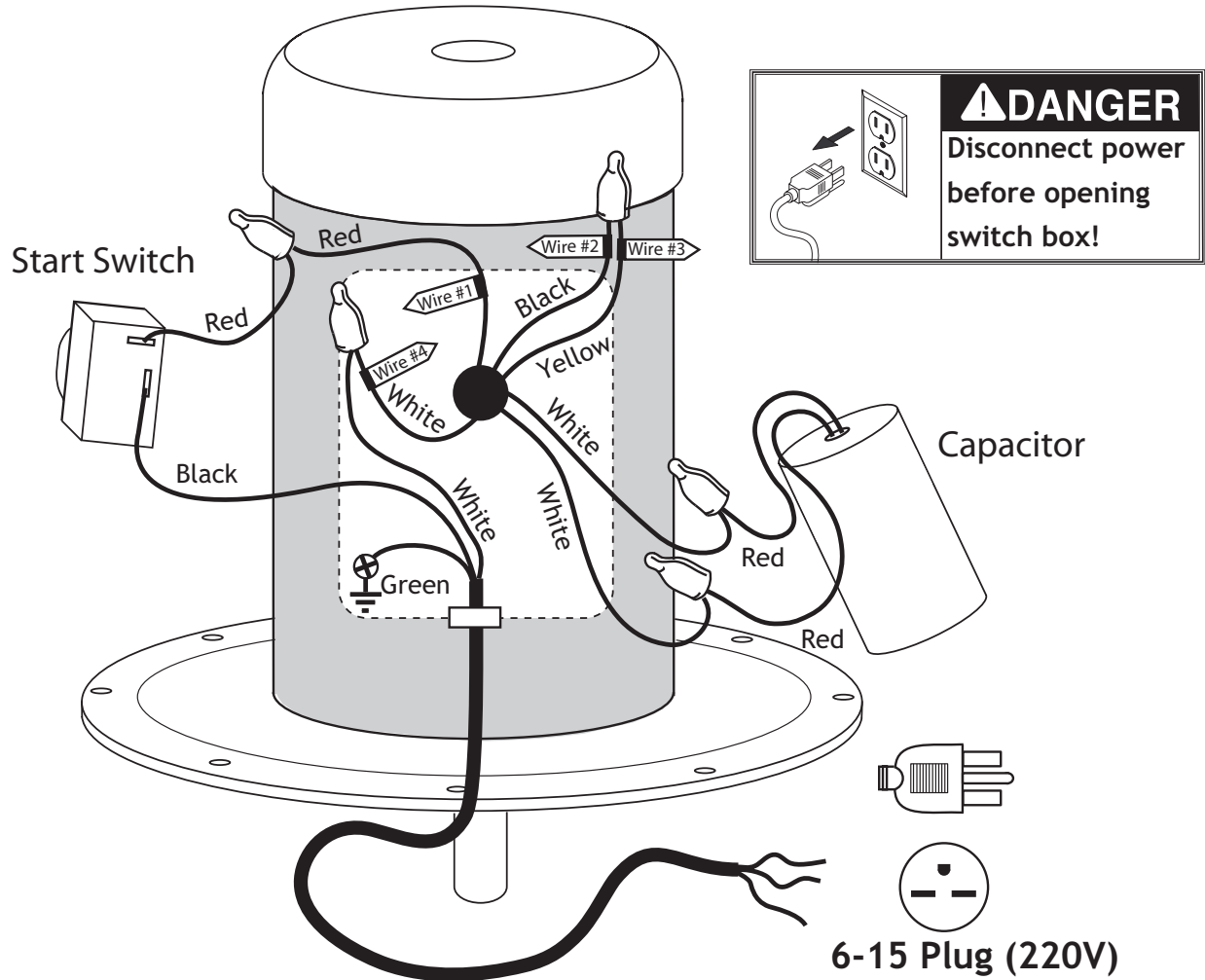


Figure 19. Removing switch box cover.

110V Wiring Diagram (Prewired)



220V Wiring Diagram

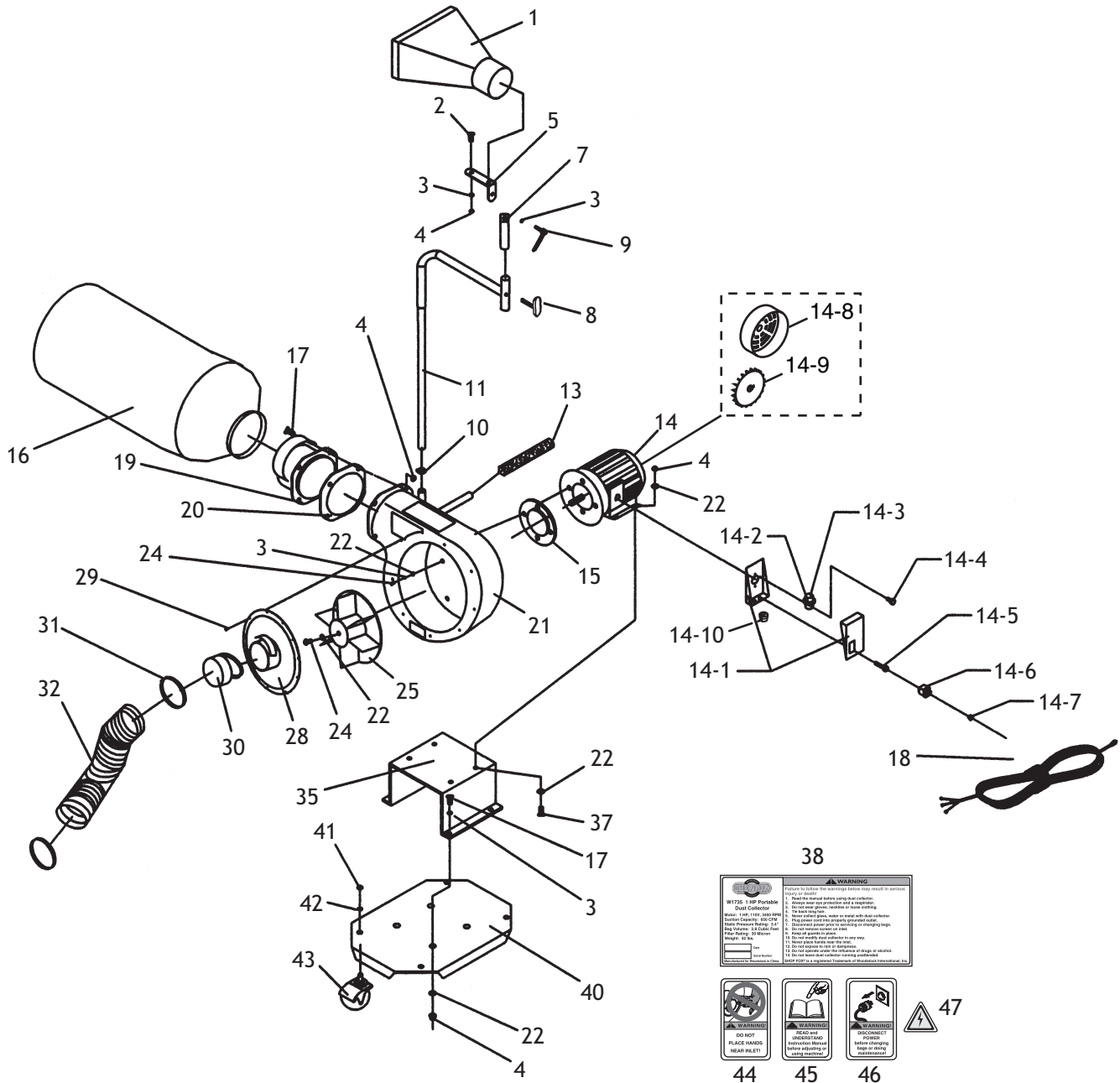


Troubleshooting

This section covers the most common dust collector problems. DO NOT make any adjustments until the dust collector is unplugged and moving parts have come to a complete stop.

SYMPTOM	POSSIBLE CAUSE	CORRECTIVE ACTION
Motor will not start, or it growls on start up.	<ol style="list-style-type: none"> 1. Power supply fuse or circuit breaker has tripped. 2. Toggle switch is broken inside. 3. Start capacitor is at fault. 4. Motor fan cover is dented, stopping the fan from being able to spin. 5. Motor is at fault. 	<ol style="list-style-type: none"> 1. Disconnect power, and inspect circuit for electrical shorts and repair. Replace circuit breaker if it is old or has tripped many times. 2. Disconnect power, and use an ohmmeter to check switch terminals for continuity, and replace switch if required. 3. Replace start capacitor. 4. Replace motor fan cover (and fan, if damaged). 5. Replace motor.
Motor runs slower than normal.	<ol style="list-style-type: none"> 1. Poor electrical connection. 2. Low power source voltage. 3. Motor is at fault. 	<ol style="list-style-type: none"> 1. Inspect the power supply for loose, corroded, or overheated electrical connections and repair. 2. Have the power source voltage checked; reduce the length of extension cord. 3. Replace the motor.
Loud, repetitious noise, or excessive vibration coming from dust collector.	<ol style="list-style-type: none"> 1. Dust collector is not on a flat surface and wobbles. 2. Impeller fan is damaged and unbalanced. 3. The motor mounting is loose. 4. Impeller is loose on the motor shaft. 5. Motor fan cover is dented, causing the motor fan to hit the cover while spinning. 	<ol style="list-style-type: none"> 1. Stabilize the dust collector. 2. Unplug dust collector, and inspect the impeller for dents, bends, loose fins. Replace impeller if any damage is found. 3. Make sure all fasteners on the dust collector are tight. 4. Replace the motor and impeller as a set if the motor shaft and the impeller hub is damaged. 5. Replace motor fan cover.
Dust collector does not adequately collect dust or chips; poor performance.	<ol style="list-style-type: none"> 1. Dust collection bags are full. 2. There is a restriction at the inlet grate. 3. The dust collector is too far away from the point of suction, or there are too many sharp bends in the ducting. 4. The lumber is wet and not flowing through the dust lines smoothly. 5. There is a leak in the ducting, or a series of small leaks, or too many open ports. 6. There is a restriction in the ducting, or the ducting and ports are incorrectly sized. 7. The machine dust collection design is inadequate. 8. The dust collector is too small for the dust collection system. 	<ol style="list-style-type: none"> 1. Empty bags. 2. Remove dust line from dust collector inlet and clean debris from the inlet grate (and wye-connector, if installed). 3. Relocate the dust collector closer to the point of suction, and rework ducting without sharp bends. Refer to the <i>Dust Collection Basics</i> handbook (ISBN 0-9635821-2-7) to help configure your dust system. 4. Process lumber with less than 20% moisture content. 5. Rework the ducting as to eliminate all leaks, and refer to the <i>Dust Collection Basics</i> handbook (ISBN 0-9635821-2-7) for more solutions. 6. Rework the ducting as to eliminate all restrictions, and refer to the <i>Dust Collection Basics</i> handbook (ISBN 0-9635821-2-7) for more solutions. 7. Ask your dealer for proper dust collection accessories or the SHOP FOX Dust Collection Nozzle On Stand. 8. Install a larger dust collector to power your dust collection system.

W1735 Parts Breakdown



W1735 Parts List

REF	PART #	DESCRIPTION
1	X1735001	DUST NOZZLE
2	XPCB05	CARRIAGE BOLT 5/16"-18 X 3/4"
3	XPLW01	LOCK WASHER 5/16"
4	XPNO2	HEX NUT 5/16"-18
5	X1735005	SUPPORT BRACKET
7	X1735007	UPPER SUPPORT TUBE
8	X1735008	T-KNOB BOLT 5/16"-18 X 5/8"
9	X1735009	ADJUSTABLE LOCK LEVER
10	X1735010	SUPPORT TUBE CLAMP
11	X1735011	LOWER SUPPORT TUBE
13	X1735013	HANDLE COVER
14	X1735014	MOTOR ASSEMBLY
14-1	X1735014-1	SWITCH BOX COVER
14-2	X1735014-2	CAPACITOR CLAMP
14-3	XPC30	CAPACITOR 30MFD 250V (START)
14-4	XPS06	PHLP HD SCR 10-24 X 3/8"
14-5	XPFB06	FLANGE BOLT 10-24 X 3/8"
14-6	X1735014-6	SWITCH ASSEMBLY W/KEY
14-7	X1735014-7	SWITCH KEY
14-8	X1735014-8	MOTOR FAN COVER
14-9	X1735014-9	MOTOR FAN
14-10	X1735014-10	STRAIN RELIEF 5/8"
15	X1735015	GASKET
16	X1735016	COLLECTION BAG

REF	PART #	DESCRIPTION
17	XPB32	HEX BOLT 5/16"-18 X 5/8"
18	X1735018	POWER CORD
19	X1735019	COLLECTION BAG ADAPTER
20	X1735020	GASKET
21	X1735021	BLOWER HOUSING
22	XPW07	FLAT WASHER 5/16
24	XPB07	HEX BOLT 5/16"-18 X 3/4"
25	X1735025	IMPELLER
28	X1735028	INLET DISC
29	XPS02M	PHLP HD SCR M4-.7 X 12
30	X1735030	INTAKE PORT CAP
31	X1735031	4" HOSE CLAMP
32	X1735032	4" X 10' FLEXIBLE HOSE
35	X1735035	MOTOR BASE
37	XPB03	HEX BOLT 5/16"-18 x 1"
38	X1735038	MACHINE ID LABEL
40	X1735040	BASE
41	XPNO8	HEX NUT 3/8"-16
42	XPLW04	LOCK WASHER 3/8"
43	X1735043	SWIVEL CASTER
44	X1735044	LABEL, HANDS NEAR INLET
45	X1735045	LABEL, READ MANUAL
46	X1735046	LABEL, UNPLUG MACHINE
47	X1735047	LABEL, ELECTRICITY

WARRANTY

Woodstock International, Inc. warrants all **SHOP FOX®** machinery to be free of defects from workmanship and materials for a period of 2 years from the date of original purchase by the original owner. This warranty does not apply to defects due directly or indirectly to misuse, abuse, negligence or accidents, lack of maintenance, or to repairs or alterations made or specifically authorized by anyone other than Woodstock International, Inc.

Woodstock International, Inc. will repair or replace, at its expense and at its option, the **SHOP FOX®** machine or machine part which in normal use has proven to be defective, provided that the original owner returns the product prepaid to the **SHOP FOX®** factory service center or authorized repair facility designated by our Bellingham, WA office, with proof of their purchase of the product within 2 years, and provides Woodstock International, Inc. reasonable opportunity to verify the alleged defect through inspection. If it is determined there is no defect, or that the defect resulted from causes not within the scope of Woodstock International Inc.'s warranty, then the original owner must bear the cost of storing and returning the product.

This is Woodstock International, Inc.'s sole written warranty and any and all warranties that may be implied by law, including any merchantability or fitness, for any particular purpose, are hereby limited to the duration of this written warranty. We do not warrant that **SHOP FOX®** machinery complies with the provisions of any law or acts. In no event shall Woodstock International, Inc.'s liability under this warranty exceed the purchase price paid for the product, and any legal actions brought against Woodstock International, Inc. shall be tried in the State of Washington, County of Whatcom. We shall in no event be liable for death, injuries to persons or property or for incidental, contingent, special or consequential damages arising from the use of our products.

Every effort has been made to ensure that all **SHOP FOX®** machinery meets high quality and durability standards. We reserve the right to change specifications at any time because of our commitment to continuously improve the quality of our products.

WARRANTY REGISTRATION

Name _____
Street _____
City _____ State _____ Zip _____
Phone Number _____ E-Mail _____ FAX _____
MODEL # _____ SERIAL # _____ DEALER NAME _____ PURCHASE DATE ____ / ____ / ____

The following information is given on a voluntary basis and is strictly confidential.

1. How did you first learn about us?

<input type="checkbox"/> Advertisement	<input type="checkbox"/> Friend
<input type="checkbox"/> Mail order Catalog	<input type="checkbox"/> Local Store
<input type="checkbox"/> World Wide Web Site	
<input type="checkbox"/> Other _____	
2. Which of the following magazines do you subscribe to.

<input type="checkbox"/> Cabinetmaker	<input type="checkbox"/> WOOD
<input type="checkbox"/> Family Handyman	<input type="checkbox"/> Wooden Boat
<input type="checkbox"/> Fine Homebuilding	<input type="checkbox"/> Woodshop News
<input type="checkbox"/> Woodsmith	<input type="checkbox"/> Today's Homeowner
<input type="checkbox"/> Home Handyman	<input type="checkbox"/> Woodwork
<input type="checkbox"/> Journal of Light Construction	<input type="checkbox"/> Woodworker
<input type="checkbox"/> Old House Journal	<input type="checkbox"/> Woodworker's Journal
<input type="checkbox"/> Popular Mechanics	<input type="checkbox"/> Workbench
<input type="checkbox"/> Popular Science	<input type="checkbox"/> American How-To
<input type="checkbox"/> Popular Woodworking	
<input type="checkbox"/> Other _____	
3. Which of the following woodworking/remodeling shows do you watch?

<input type="checkbox"/> Backyard America	<input type="checkbox"/> The New Yankee Workshop
<input type="checkbox"/> Home Time	<input type="checkbox"/> This Old House
<input type="checkbox"/> The American Woodworker	<input type="checkbox"/> Woodwright's Shop
<input type="checkbox"/> Other _____	
4. What is your annual household income?

<input type="checkbox"/> \$20,000-\$29,999	<input type="checkbox"/> \$60,000-\$69,999
<input type="checkbox"/> \$30,000-\$39,999	<input type="checkbox"/> \$70,000-\$79,999
<input type="checkbox"/> \$40,000-\$49,999	<input type="checkbox"/> \$80,000-\$89,999
<input type="checkbox"/> \$50,000-\$59,999	<input type="checkbox"/> \$90,000 +
5. What is your age group?

<input type="checkbox"/> 20-29	<input type="checkbox"/> 50-59
<input type="checkbox"/> 30-39	<input type="checkbox"/> 60-69
<input type="checkbox"/> 40-49	<input type="checkbox"/> 70 +
6. How long have you been a woodworker?

<input type="checkbox"/> 0 - 2 Years	<input type="checkbox"/> 8 - 20 Years
<input type="checkbox"/> 2 - 8 Years	<input type="checkbox"/> 20+ Years
7. How would you rank your woodworking skills?

<input type="checkbox"/> Simple	<input type="checkbox"/> Advanced
<input type="checkbox"/> Intermediate	<input type="checkbox"/> Master Craftsman
8. How many SHOP FOX® machines do you own? _____
9. What stationary woodworking tools do you own? Check all that apply.

<input type="checkbox"/> Air Compressor	<input type="checkbox"/> Panel Saw
<input type="checkbox"/> Band Saw	<input type="checkbox"/> Planer
<input type="checkbox"/> Drill Press	<input type="checkbox"/> Power Feeder
<input type="checkbox"/> Drum Sander	<input type="checkbox"/> Radial Arm Saw
<input type="checkbox"/> Dust Collector	<input type="checkbox"/> Shaper
<input type="checkbox"/> Horizontal Boring Machine	<input type="checkbox"/> Spindle Sander
<input type="checkbox"/> Jointer	<input type="checkbox"/> Table Saw
<input type="checkbox"/> Lathe	<input type="checkbox"/> Vacuum Veneer Press
<input type="checkbox"/> Mortiser	<input type="checkbox"/> Wide Belt Sander
<input type="checkbox"/> Other _____	
10. Which benchtop tools do you own? Check all that apply.

<input type="checkbox"/> 1" x 42" Belt Sander	<input type="checkbox"/> 6" - 8" Grinder
<input type="checkbox"/> 5" - 8" Drill Press	<input type="checkbox"/> Mini Lathe
<input type="checkbox"/> 8" Table Saw	<input type="checkbox"/> 10" - 12" Thickness Planer
<input type="checkbox"/> 8" - 10" Bandsaw	<input type="checkbox"/> Scroll Saw
<input type="checkbox"/> Disc/Belt Sander	<input type="checkbox"/> Spindle/Belt Sander
<input type="checkbox"/> Mini Jointer	
<input type="checkbox"/> Other _____	
11. Which portable/hand held power tools do you own? Check all that apply.

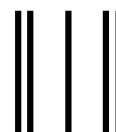
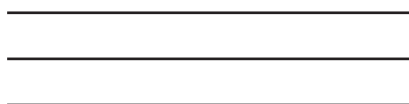
<input type="checkbox"/> Belt Sander	<input type="checkbox"/> Orbital Sander
<input type="checkbox"/> Biscuit Joiner	<input type="checkbox"/> Palm Sander
<input type="checkbox"/> Circular Saw	<input type="checkbox"/> Portable Planer
<input type="checkbox"/> Detail Sander	<input type="checkbox"/> Saber Saw
<input type="checkbox"/> Drill/Driver	<input type="checkbox"/> Reciprocating Saw
<input type="checkbox"/> Miter Saw	<input type="checkbox"/> Router
<input type="checkbox"/> Other _____	
12. What machines/supplies would you like to see?

13. What new accessories would you like Woodstock International to carry?

14. Do you think your purchase represents good value?
☐ Yes ☐ No
15. Would you recommend SHOP FOX® products to a friend?
☐ Yes ☐ No
16. Comments: _____

CUT ALONG DOTTED LINE

FOLD ALONG DOTTED LINE



Place
Stamp
Here



WOODSTOCK INTERNATIONAL INC.
P.O. BOX 2309
BELLINGHAM, WA 98227-2309



FOLD ALONG DOTTED LINE

TAPE ALONG EDGES--PLEASE DO NOT STAPLE

