

Model D4111 Heavy-Duty Roller Stand Instruction Sheet



Phone #: (360) 734-3482 • Online Tech Support: tech-support@shopfox.biz • Web: www.shopfox.biz

Introduction

The Model D4111 Heavy-Duty Roller Stand is vertically adjustable from 26½" to 41" with the use of a crank handle and the attached elevation gears, as shown in **Figure 1**. The stand has a 270 lb. capacity.

Inventory

After removing the contents of the shipping box, lay them out and refer to the **Parts Diagram & List** on the back page to inventory the components.

Assembly

Refer to **Figure 1** and the **Parts Diagram** to aid you during assembly.

Tools Needed	Qty
Phillips Screwdriver #2.....	1
Hex Wrench 3mm	1
Wrench or Socket 10mm.....	1
Wrench or Socket 13mm.....	1

To assemble the roller stand, do these steps:

1. Thread the four foot pads into the base.
2. Secure the bottom vertical support onto the base by threading the ¾"-16 x 1" hex bolt, lock washer, and flat washer through the bottom of the base and into the support.
3. Insert the top vertical support into the bottom support with the horizontal slits facing toward the gear assembly mounting.
4. Position the elevation gearbox onto its mounting point and make sure the gear teeth mesh with the slits in the top vertical support, then secure the gearbox with the four ¼"-20 x 1½" Phillips head screws.
5. Align the set screw in the crank handle hub with the flat of the gear assembly shaft, slide the crank onto the shaft, then tighten the set screw to secure it in place.
6. Thread the two lock knobs into the holes on the bottom support.
7. Attach the roller bracket to the top vertical support with the four ¼"-20 x 1½" flange bolts.
8. Insert one side of the roller axle into a roller bracket mounting hole, then push in on the other end of the spring-loaded axle until you can insert it into the remaining mounting hole.

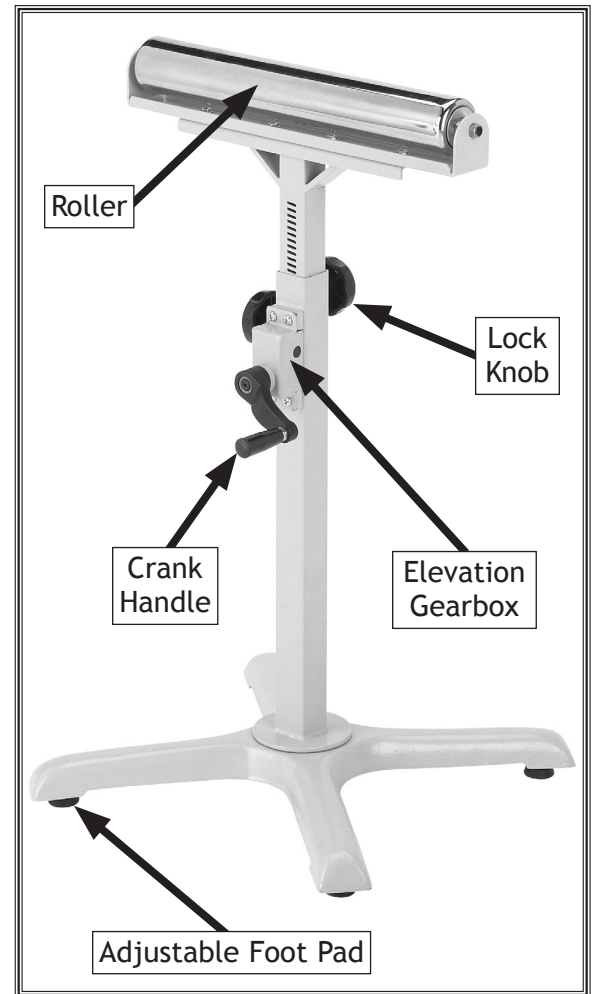
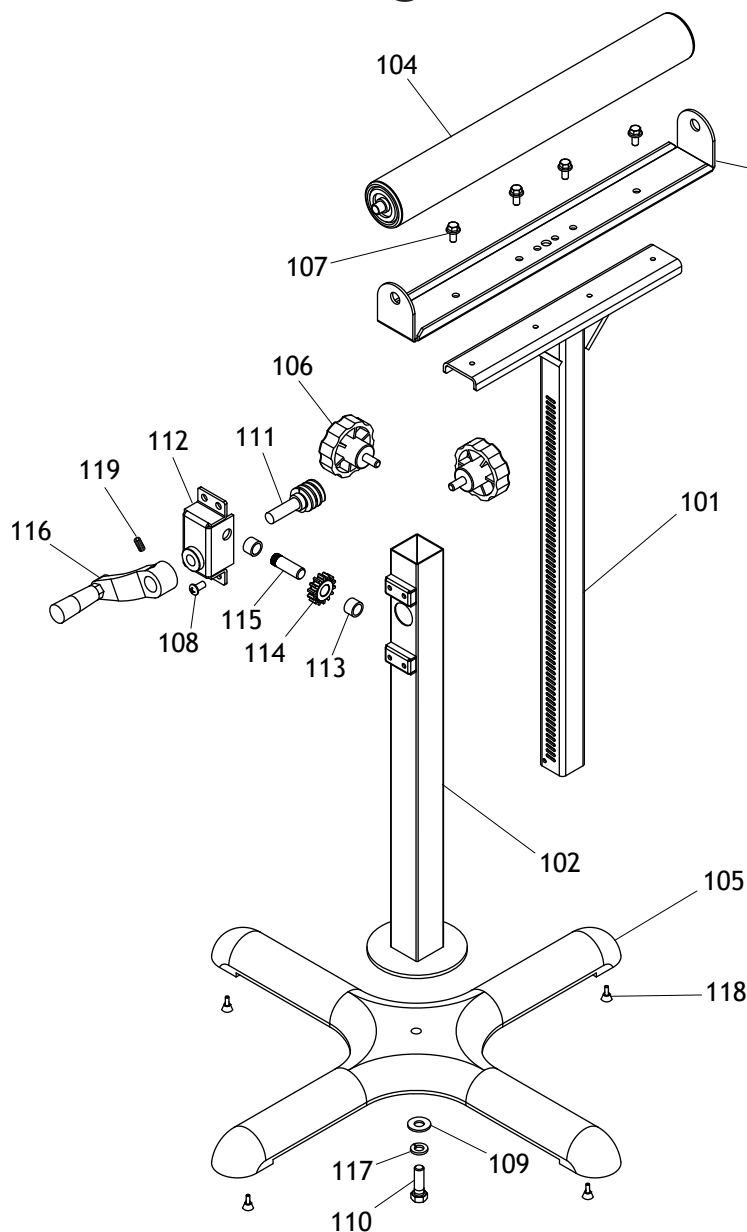


Figure 1. Model D4111 identification.

Parts Diagram & List



REF	PART #	DESCRIPTION	QTY
101	XD4111101	TOP VERTICAL SUPPORT	1
102	XD4111102	BOTTOM VERTICAL SUPPORT	1
103	XD4111103	ROLLER BRACKET	1
104	XD4111104	ROLLER ASSEMBLY	1
105	XD4111105	BASE	1
106	XD4111106	LOCK KNOB 5/16-18 X 3/4	2
107	XPFB03	FLANGE BOLT 1/4-20 X 1/2	4
108	XPS04	PHLP HD SCR 1/4-20 X 1/2	4
109	XPW02	FLAT WASHER 3/8	1
110	XPB18	HEX BOLT 3/8-16 X 1	1

REF	PART #	DESCRIPTION	QTY
111	XD4111111	WORM GEAR	1
112	XD4111112	GEAR HOUSING	1
113	XD4111113	BUSHING	2
114	XD4111114	BEVEL GEAR	1
115	XD4111115	GEAR AXLE	1
116	XD4111116	CRANK HANDLE	1
117	XPLW04	LOCK WASHER 3/8	1
118	XD4111118	FOOT PAD M6-1 X 20	4
119	XPSS01M	SET SCREW M6-1 X 10	1

COPYRIGHT © JUNE, 2010 BY WOODSTOCK INTERNATIONAL, INC.

WARNING: NO PORTION OF THIS MANUAL MAY BE REPRODUCED IN ANY SHAPE OR FORM WITHOUT

#13035TS

THE WRITTEN APPROVAL OF WOODSTOCK INTERNATIONAL, INC.

Printed in Taiwan