

MODEL D4071 SELF-RETRACTING HOSE REEL



OWNER'S MANUAL *(FOR MODELS MANUFACTURED SINCE 6/10)*

Phone: (360) 734-3482 • Online Technical Support: tech-support@shopfox.biz

JUNE, 2010 BY WOODSTOCK INTERNATIONAL, INC.

**WARNING: NO PORTION OF THIS MANUAL MAY BE REPRODUCED IN ANY SHAPE OR FORM WITHOUT
THE WRITTEN APPROVAL OF WOODSTOCK INTERNATIONAL, INC.**

#JB12996 Printed in China

Specification

Item	Inlet/Outlet (Inch)	Max Pressure (Psi/bar)	PVC Hose Capacity		Media
			I.D. (inch)	Length(ft/m)	
D4071	1/4"	180/12	1/4"	33/10	Air

Low pressure reels furnished standard with PVC hose. Maximum temperature 140 F(60 C)

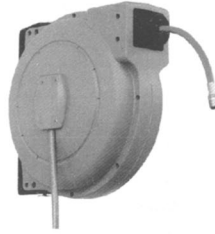


Figure 1

Read the following precautions and instructions before you begin assembly or using. Failure to comply with these instructions could result in personal injury or property damage. Keep these instructions in a convenient location for future reference.

Hose Reel Safety Precautions



WARNING

Exposure of skin directly to pressurized air, or fluids could result in severe bodily injury.

1. Make sure incoming line pressure does not exceed the rated operating pressure for your model hose reel.
2. Use proper eye protection when assembling and using the hose reel.
3. Use soap and water when checking for leaks.
4. Keep children away from the work area.

Installation of Reel

For overhead ceiling mounting: Install reel at least 10 feet above the floor. You will need to purchase appropriate hardware for mounting your new reel.

1. The reel base has three 10.5mm (13/32") drilled holes for mounting on a suitable flat surface. Figure 3 is a template showing the correct location of the 3 mounting holes in the base.

2. Using the three holes in the base, mount the reel in the desired location.
Be sure to use appropriate hardware and tighten securely.
3. Apply Teflon tape or pipe sealant to supply line threads, attach to reel inlet and tighten. The other end of incoming line can now be connected to desired supply source.
4. Apply Teflon tape or pipe sealant to outlet fitting on reel hose, then attach to desired tool, or nozzle. Check connection for leakage, also check hose reel for correct operation. See: Operation section.
5. If hose stopper adjustment is required, pull hose from reel and allow to latch at desired length. Loosen stopper bolts, and slide stopper to a position close to the hose guide. Tighten stopper bolts, and unlatch the reel

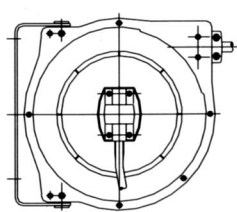
Operation

1. Check reel for correct operation by slowly pulling out the hose. A "clicking" noise will be heard every half revolution of the drum.
2. Pull out the hose and allow it to retract. After hearing the first second or third "click".
3. Slowly pull out the hose until the "clicking" noise stops, and then let the hose retract until the hose stopper rests against the hose guide.
4. Periodically check the hose condition for wear or damage, and check the swivel fitting for leakage. Replace any worn, damaged, or leaking parts.

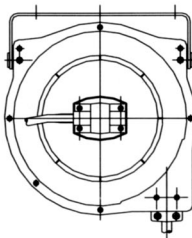


WARNING

Do not allow hose to retract without restraining recoil speed. Never let go of the hose when rewinding. Failure to comply may result in severe injury.

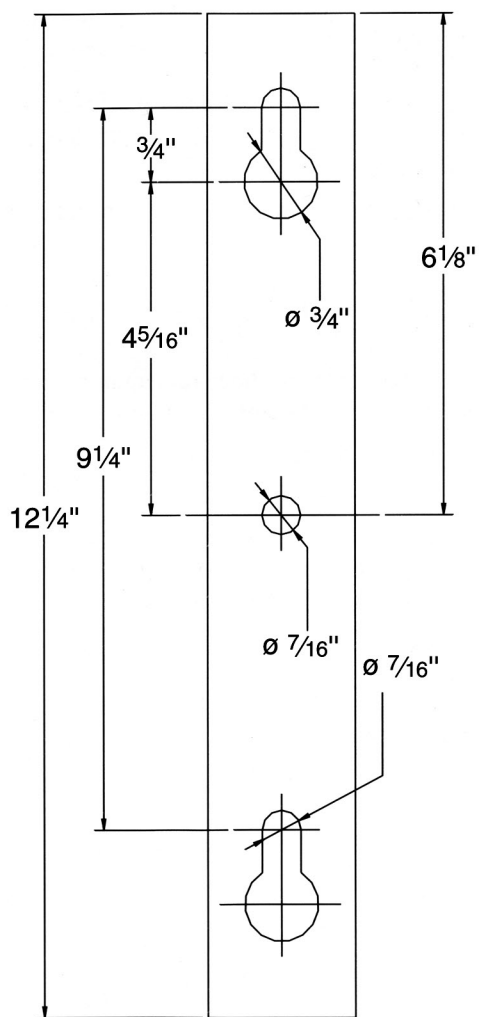


Wall



Ceiling

Figure2



Mounting Dimension

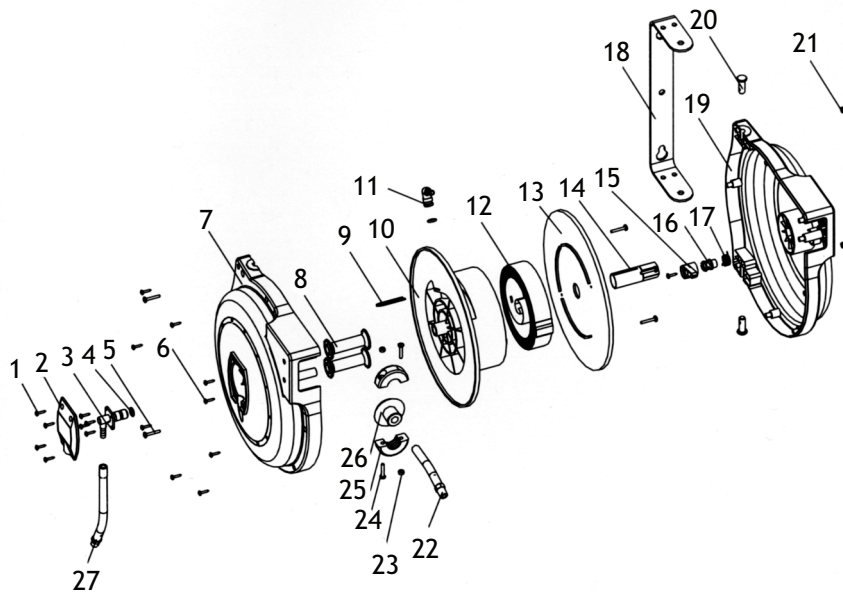
Figure 3

Replacement of Swivel Seals

1. Turn off the pressure origin , open the cover #2 and swivel spool #3,
Remove the O-ring and replace it with the new O-ring, then reassemble
the swivel spool and cover .
2. Re-connect inlet supply line. Check connections and swivel for leakage.

Limited Warranty

1. The manufacturer warrants this hose reel against defects in material
and craftsmanship, for a period of 12 months from date of purchase.
2. Hose, if supplied with reel, O-rings, plastic rollers and rubber stopper
are deemed to be normal wear items; not warranted.
3. Manufacturer's liability is limited to replacement or repair of defective
material within the warranty period, when returned freight prepaid to the
distributor or their designated service depot.
4. The warranty does not cover damage caused by accident, misuse or
faulty installation.
5. The reel must be installed and maintained in compliance with the
instructions.



REF	PART #	DESCRIPTION
1	XPHTEK6M	TAP SCREW M4 X 16
2	XD4071002	PLASTIC COVER
3	XD4071003	SWIVEL FITTING
4	XD4071004	O-RING
5	XD4071005	BOLT
6	XPHTEK8M	TAP SCREW M4 X 20
7	XD4071007	LEFT CASE
8	XD4071008	ROLLER
9	XD4071009	HOSE JOINT RETAINER
10	XD4071010	SPOOL
11	XD4071011	HOSE FITTING
12	XD4071012	COIL SPRING
13	XD4071013	SPOOL BACK PLATE
14	XD4071014	SPOOL AXLE

REF	PART #	DESCRIPTION
15	XD4071015	RATCHET PAWL
16	XD4071016	RATCHET PIN
17	XD4071017	TORSION SPRING
18	XD4071018	MOUNTING BRACKET
19	XD4071019	RIGHT CASE
20	XD4071020	BRACKET PIVOT
21	XD4071021	HEX NUT
22	XD4071022	HOSE 1/4" X 33'
23	XD4071023	STOP BLOCK
24	XD4071024	BOLT
25	XD4071025	STOP BLOCK
26	XD4071026	RUBBER STOP
27	XD4071027	INLET HOSE