

Model D3698 Laser Guide For W1803 Straight Line Rip Saw Instruction Sheet



Phone #: (360) 734-3482 • Online Tech Support: tech-support@shopfox.biz • Web: www.shopfox.biz

Introduction

Your new Model D3698 Laser Guide (**Figure 1**) is simple to install on your Model W1803 Straight Line Rip Saw, and provides a precise laser guide to mark the cut line.

Inventory	Qty
• Steel Arm	1
• Laser Bracket	1
• Laser Clamp	1
• Laser	1
• Power Box	1
• Cap Screws M8-1.25 x 25	4
• Flat Washers 8mm	4
• Lock Washers 8mm	4
• Cap Screws M6-1 x 16	2
• Flat Washers 6mm	2
• Cap Screws M6-1 x 35	2
• Phillips Head Screws M5-.8 x 8	2



Figure 1. D3698 Laser Guide.

To install the Model D3698 laser guide onto the Model W1803 rip saw, do these steps:

1. DISCONNECT THE SAW FROM POWER!
2. Drill and tap four holes into the front of the Model W1803 headstock to accept M8-1.25 threads (see **Figure 2**).
3. Use the threaded holes created in **Step 1** to secure the steel arm to the headstock with the (4) M8-1.25 x 25 cap screws, flat washers, and lock washers.

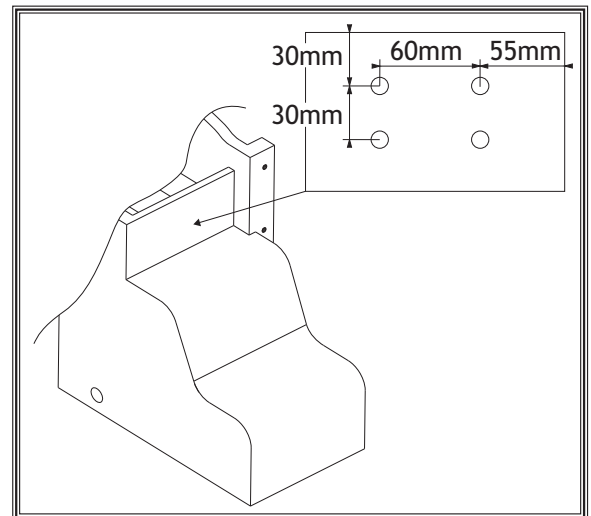


Figure 2. Location and hole pattern for laser guide arm attachment.

⚠ WARNING

To prevent damage to eyes, DO NOT look directly into the laser beam.

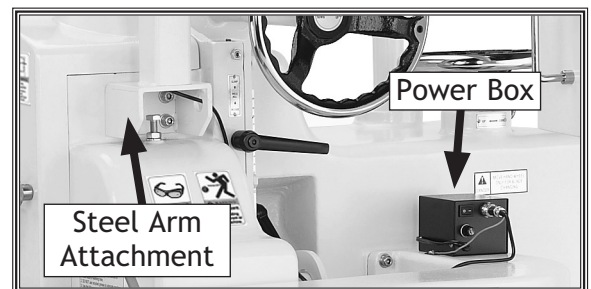


Figure 3. Location of steel arm attachment and power box.

COPYRIGHT © OCTOBER, 2007 BY WOODSTOCK INTERNATIONAL, INC.

WARNING: NO PORTION OF THIS MANUAL MAY BE REPRODUCED IN ANY SHAPE OR FORM WITHOUT

#10106TS

THE WRITTEN APPROVAL OF WOODSTOCK INTERNATIONAL, INC.

Printed in Taiwan

4. Mount the laser bracket to the top of the steel arm with the (2) M6-1 x 16 cap screws and flat washers (see Figure 4).
5. Place the laser clamp around the laser and secure the assembly to the laser bracket with the (2) M6-1 x 35 cap screws.
6. Attach the black power box to the rip saw with the (2) M5-.8 x 8 Phillips head screws (see Figure 3).

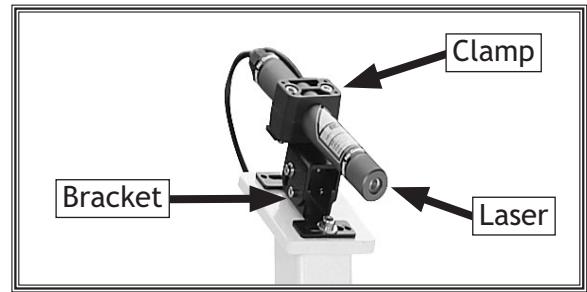


Figure 4. Laser guide attached.

Note: Make sure the loose end of the green ground wire is secured between the head of a Phillips screw and the power box.

7. Route the power wires from the power box through the side of the saw base and into the electrical panel compartment.
8. Connect the R1 and T1 laser power wires to their respective R1 and T1 terminals on the electrical panel (see Figure 5).
9. Feed the power cable from the electrical panel through the access holes of the steel arm, and plug it into the power box.
10. Connect the saw to power and rip cut a scrap piece of stock (refer to **Model W1803 Owner's Manual** for detailed instructions).
11. Turn the saw **OFF**, and align the cut stock firmly against the rip fence, then adjust the laser beam along the freshly cut edge.

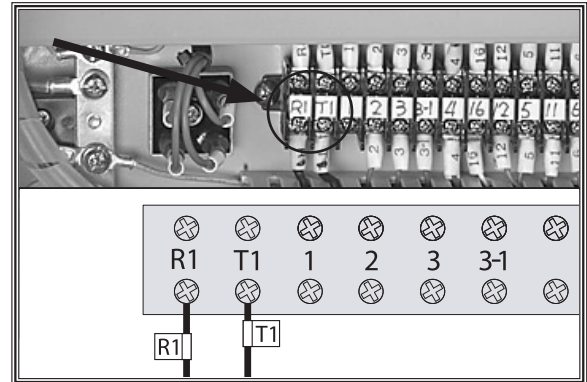


Figure 5. Laser electrical connection.

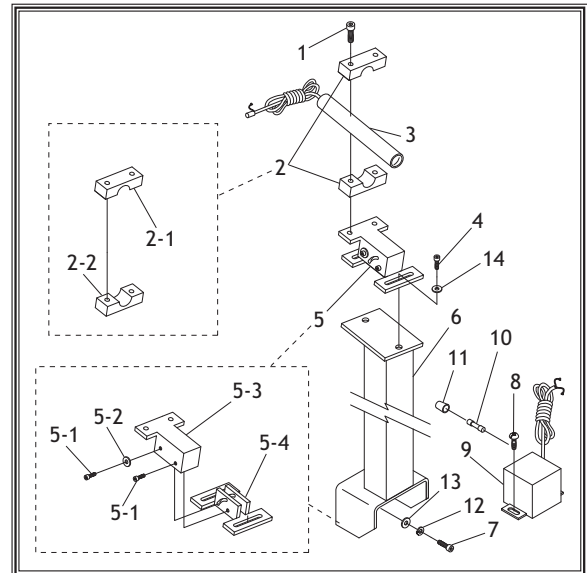


Figure 6. Model D3698 breakdown.

Model D3698 Parts List

REF	PART #	DESCRIPTION
1	XPSB48M	CAP SCREW M6-1 x 35
2	XD3698002	LASER CLAMP ASSEMBLY
2-1	XD3698002-1	LASER CLAMP TOP
2-2	XD3698002-2	LASER CLAMP BOTTOM
3	XD3698003	LASER
4	XPSB01M	CAP SCREW M6-1 X 16
5	XD3698005	LASER BRACKET ASSEMBLY
5-1	XPSB18M	CAP SCREW M4-.7 X 8
5-2	XPW05M	FLAT WASHER 4MM
5-3	XD3698005-3	LASER BRACKET TOP

REF	PART #	DESCRIPTION
5-4	XD3698005-4	LASER BRACKET BOTTOM
6	XD3698006	STEEL ARM
7	XPSB31M	CAP SCREW M8-1.25 X 25
8	XPS05M	PHLP HD SCR M5-.8 x 8
9	XD3698009	POWER BOX
10	XD3698010	FUSE T1AL250V
11	XD3698011	FUSE COVER
12	XPLW04M	LOCK WASHER 8MM
13	XPW01M	FLAT WASHER 8MM
14	XPW03M	FLAT WASHER 6MM