



Model D3574 Resaw Fence for W1729 Manual Update

Introduction

Installing the new fence requires replacing the original fence with the new fence support tube on the fence base, attaching the resaw fence, then putting on the new fence scale.

Inventory

- Resaw Fence1
- Fence Support Tube.....1
- Flat Washer 8mm.....1
- Moving Plate.....1
- Adjustment Handle.....1
- Scale.....1
- Cap Screws M6-1 x 30.....4

Installing Fence Support Tube

1. Remove the four cap screws (**Figure 1**) and remove the fence from your original fence base.
2. Install the fence support tube on the fence base with the spacer plate between the them, as shown in **Figure 2**.

Attaching Resaw Fence

1. Insert the adjustment handle with washer through the hole in the fence and attach the moving plate on the other side (**Figure 3**).
2. Slide the resaw fence over the moving plate, center it with your original fence, and lock it in position with the adjustment handle.

Installing Scale

1. Raise the blade guides, and place the resaw fence against the blade.
2. Note where scale indicator line is over the old scale, and pencil a mark on the rail next to the scale.
3. Remove the old scale and install the new scale so the 0 is even with your pencil mark.



Figure 1. Four cap screws used for removing original fence.

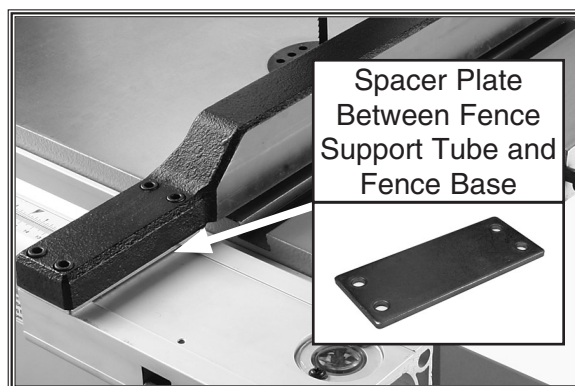


Figure 2. New fence installed with spacer plate between fence and fence base.

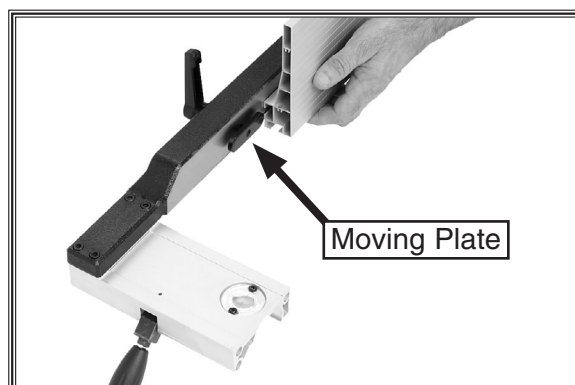
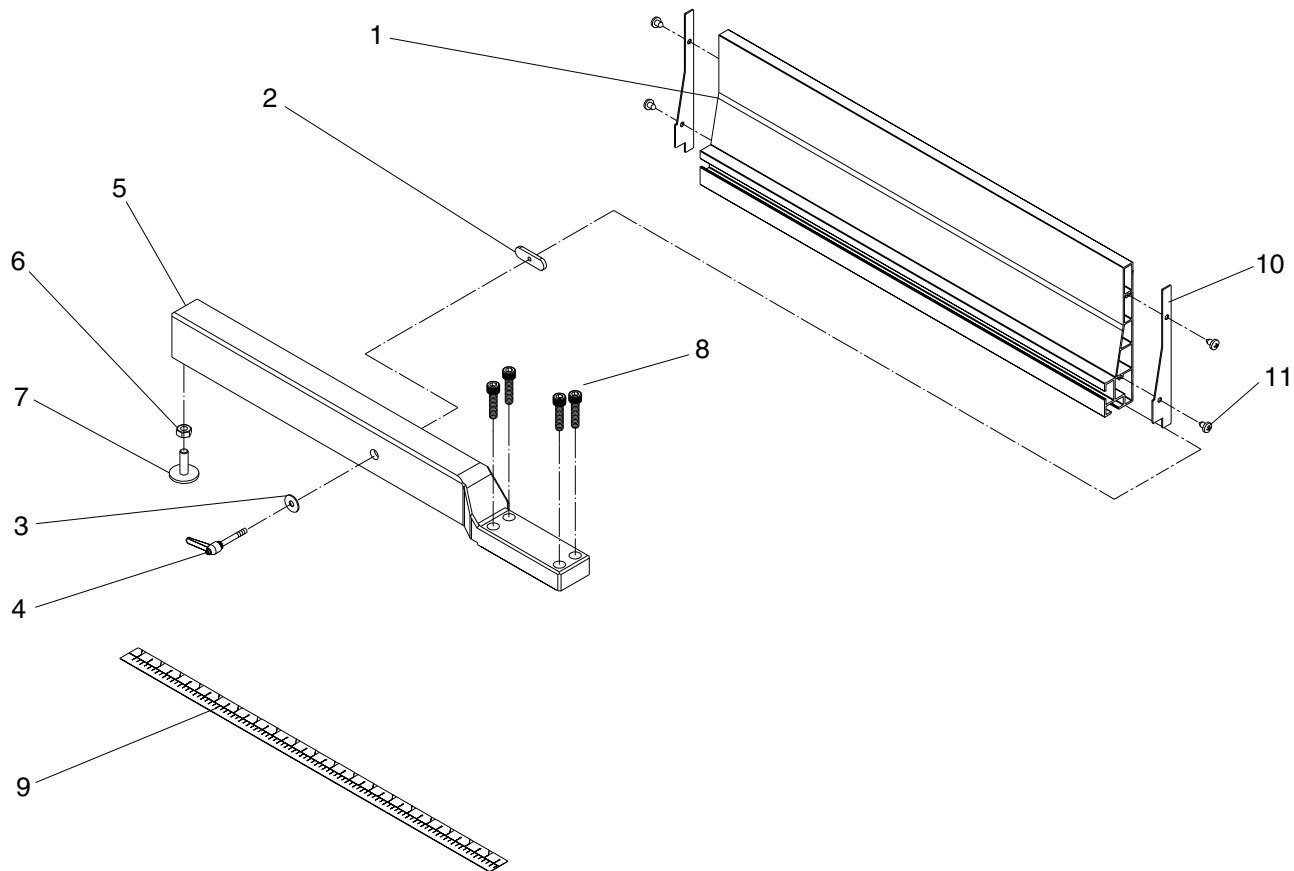


Figure 3. Installing resaw fence.

D3574 Parts Breakdown & List



REF	PART #	DESCRIPTION	QTY
1	XD3574001	RESAW FENCE (AL) 640mm	1
2	XD3574002	MOVING PLATE	1
3	XPW01M	FLAT WASHER 8MM	1
4	XD3574004	ADJUSTMENT KNOB M8 X 44	1
5	XD3575007	FENCE SUPPORT TUBE 640MM	1
6	XPN01M	HEX NUT M6-1	1
7	XD3575010	ADJUST SCREW	1
8	XPSB07M	CAP SCREW M6-1 X 30	4
9	XD3575021	SCALE	1
10	XD3574010	END COVER 148 X 22 X 1	2
11	XPHTK3M	TAP SCREW M3.5 X 8	4

Phone: 1-360-734-3482 • On-Line Technical Support: tech-support@shopfox.biz

COPYRIGHT © JUNE, 2005 BY WOODSTOCK INTERNATIONAL, INC. REVISED NOVEMBER, 2006.

WARNING: NO PORTION OF THIS MANUAL MAY BE REPRODUCED IN ANY SHAPE OR FORM WITHOUT

7297TR

THE WRITTEN APPROVAL OF WOODSTOCK INTERNATIONAL, INC.

PRINTED IN TAIWAN