



# Instruction Sheet

## Model D3272

### Regulator/Filter/Lubricator

#### INTRODUCTION

The **SHOP FOX®** Regulator/Filter/Lubricator (**Figure 1**) is great for controlling air pressure, trapping moisture, cleaning pneumatic systems, and lubricating tools.

#### SETUP

The Model D3272 accepts 1/4" NPT threads. Mount the regulator as close as possible to the air tools. Moisture will drain when the airline is not pressurized, so do not mount in a moisture sensitive location. See **Figure 2** for airline connection information.

Remove oil fill cap and fill lubrication cup to max oil level.

#### ADJUSTMENT

The Model D3272 features a locking adjustment knob. Pull the knob up to adjust the pressure, and push the knob down to lock the adjustment knob in place. **DO NOT adjust the regulator over 150 PSI!**

Adjust the needle valve clockwise to decrease lubrication flow and counterclockwise to increase lubrication flow.

#### MAINTENANCE

Always drain the collection cup if moisture reaches the max. drain level. This can be done in two ways: 1) Depressurize the airline; 2) Push the drain valve up.

Unscrew the collection cup and clean with a clean dry cloth as needed. Avoid using solvents or cleaners that would be hazardous to the cup material!

#### CUSTOMER SERVICE

For questions contact Woodstock International Technical Support at (360) 734-3482, or send e-mail to: [tech-support@shopfox.biz](mailto:tech-support@shopfox.biz).

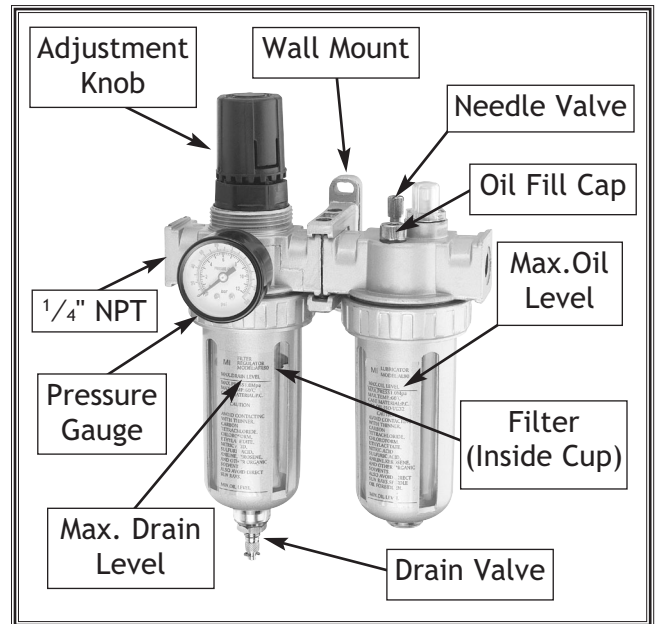


Figure 1. Model D3272.

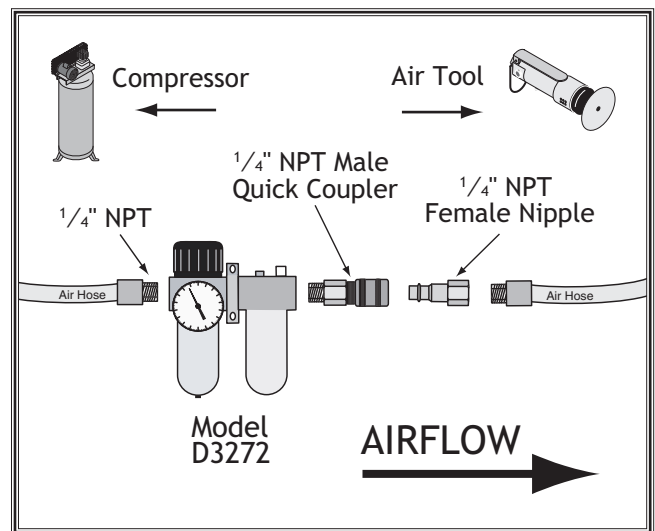


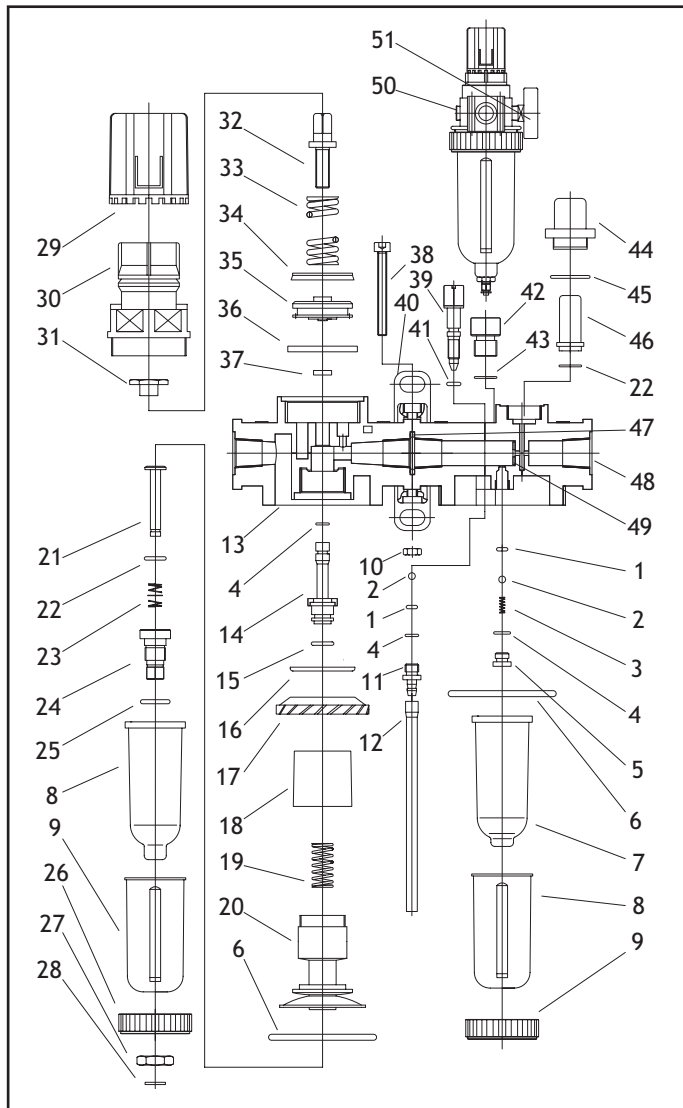
Figure 2. Typical airline layout, showing placement of the regulator.

COPYRIGHT © BY WOODSTOCK INTERNATIONAL, INC.

**WARNING: NO PORTION OF THIS DOCUMENT MAY BE REPRODUCED IN ANY SHAPE OR FORM WITHOUT THE WRITTEN APPROVAL OF WOODSTOCK INTERNATIONAL, INC.**

SEPTEMBER 2003, PRINTED IN CHINA.

# D3272 Parts Diagram



REF PART # DESCRIPTION

1	XD3272001	O-RING
2	XD3272002	STEEL BALL
3	XD3272003	THIN SPRING
4	XD3271013	O-RING
5	XD3272005	AIR SCREW CAP
6	XD3271021	O-RING
7	XD3272007	INNER SLEEVE I
8	XD3271027	OUTER SLEEVE
9	XD3271028	COLLAR

REF PART # DESCRIPTION

10	XPNO4M	HEX NUT 4MM
11	XD3272011	PLUG
12	XD3272012	RUBBER TUBE
13	XD3271012	SEAT
14	XD3271014	PRESSURE ADJ. POLE
15	XD3271015	O-RING
16	XD3271016	HALF O-RING
17	XD3271017	FILTER COVER
18	XD3271018	FILTER WEB
19	XD3271019	SPRING
20	XD3271020	FILTER SET
21	XD3271022	EMIT WATER PIN
22	XD3271023	O-RING
23	XD3271024	EMIT WATER SPRING
24	XD3271025	EMIT WATER SEAT
25	XD3271026	O-RING
26	XD3271029	OUTER SLEEVE II
27	XD3271030	EMIT WATER NUT
28	XPEC02M	E-RING 4MM
29	XD3271001	PRESSURE ADJ. REVOLVER
30	XD3271002	REVOLVER SEAT
31	XD3271003	SCREW CAP ADJ.
32	XD3271006	BOLD ADJ.
33	XD3271007	COMPRESSED SPRING
34	XD3271008	SEALING WASHER (YX)
35	XD3271009	PISTON
36	XD3271010	RECTANGLE WASHER
37	XD3271011	RECTANGLE WASHER
38	XD3272038	SPEC. CAP SCREW M4 X 40
39	XD3272039	OIL ADJ. BOLT
40	XD3272040	NIP BLOCK
41	XD3272041	O-RING
42	XD3272042	SCREW CAP
43	XD3272043	O-RING
44	XD3272044	OIL SEALING COVER
45	XD3272045	O-RING
46	XD3272046	OIL SEALING CORE
47	XD3272047	O-SEALING RING
48	XD3272048	OIL SEAT
49	XD3272049	RECTANGLE WASHER
50	XD3272050	SPECIAL SET SCREW 10MM
51	XD3272051	BAROMETER