



Bald EagleTM

MODEL BE1128-30, BE1152, BE1161 SHOOTING REST OWNER'S MANUAL

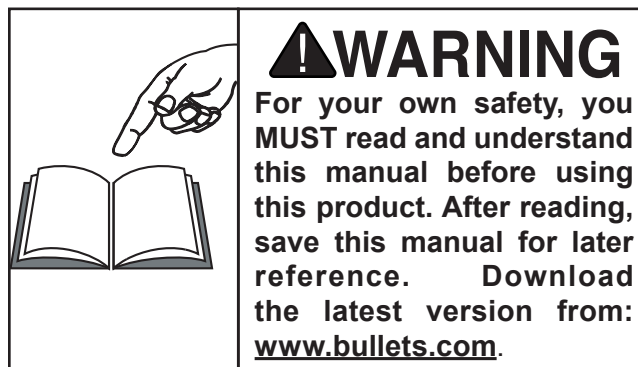


BE1128 Shown
(Bag not included)

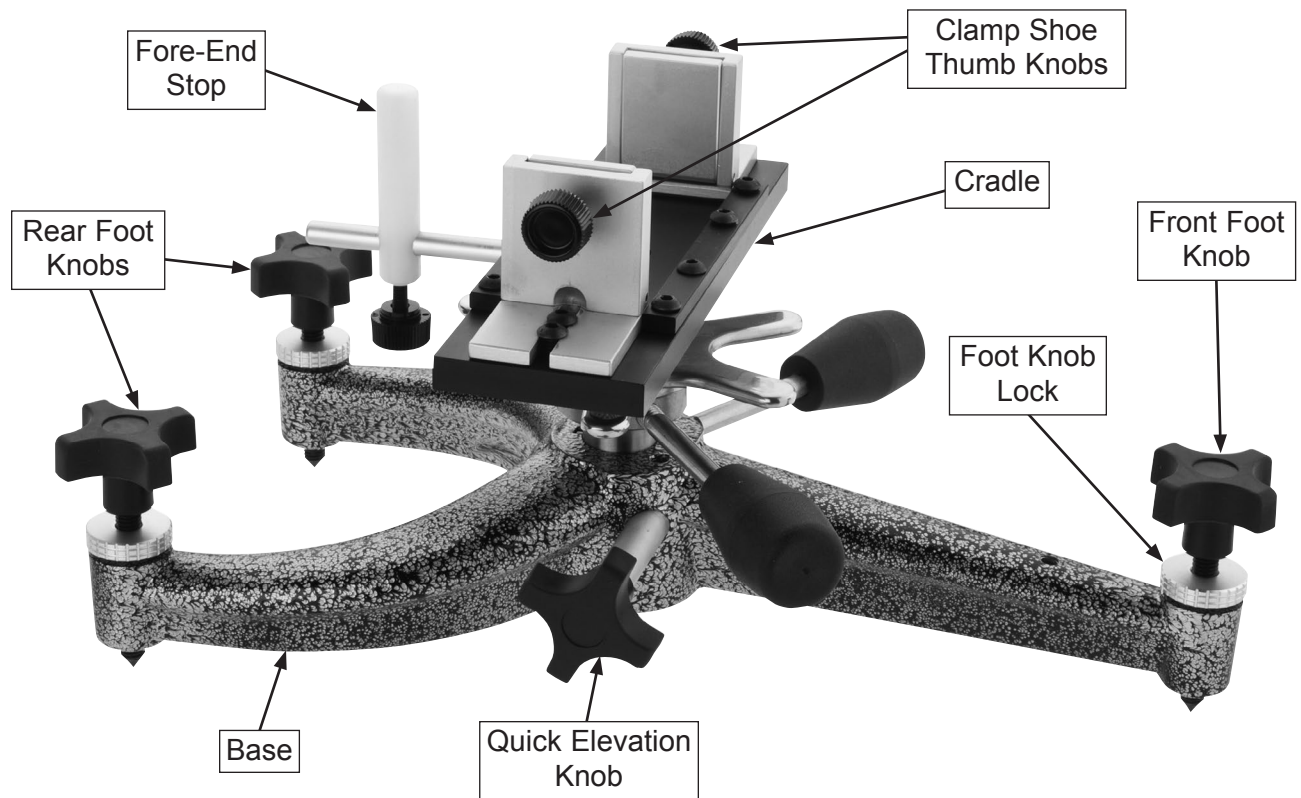
COPYRIGHT © DECEMBER, 2012 BY BULLETS.COM REVISED MARCH, 2015 (BL)
WARNING: NO PORTION OF THIS MANUAL MAY BE REPRODUCED IN ANY SHAPE OR FORM WITHOUT
THE WRITTEN APPROVAL OF BULLETS.COM
PHONE: (800) 235-0272 · EMAIL: SERVICE@BULLETS.COM · #ST15517 · PRINTED IN TAIWAN

Table of Contents

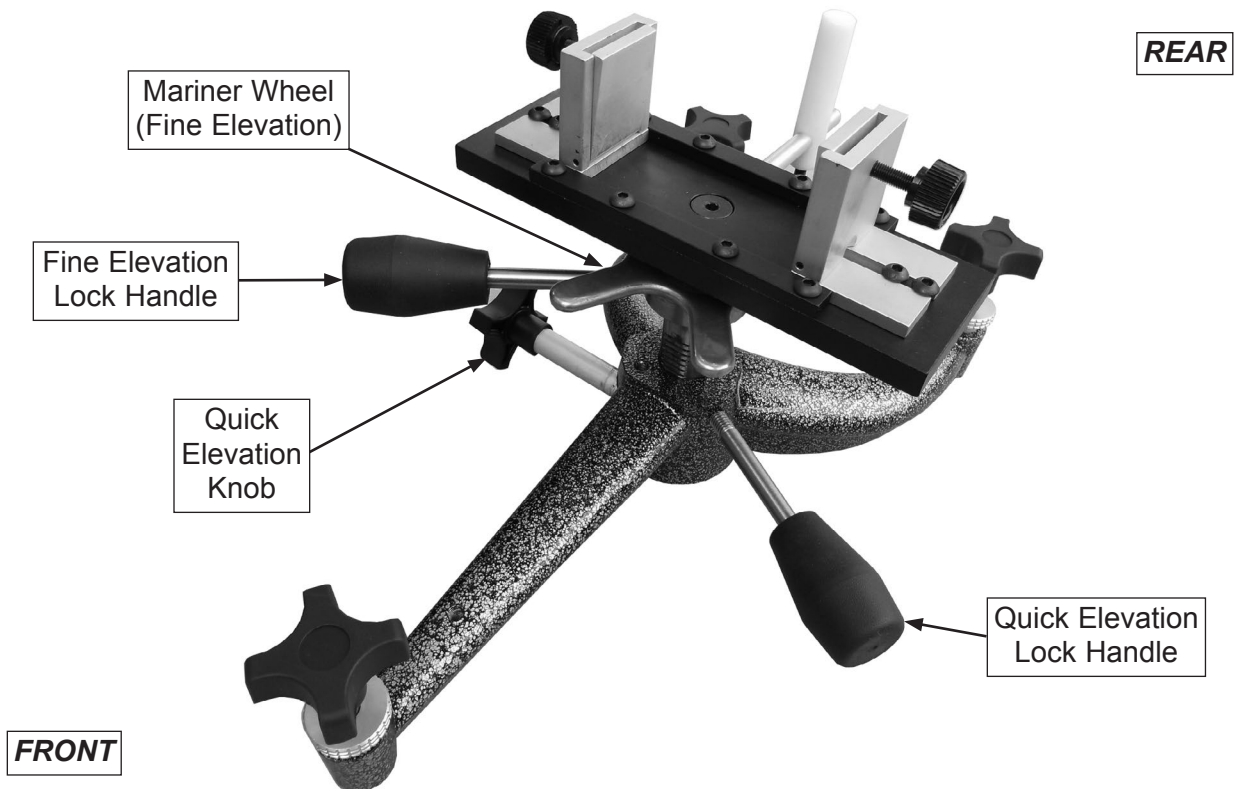
Controls & Terminology.....	1
Introduction	2
Unpacking & Inventory	2
Initial Setup	3
Installing Bag.....	4
Setup & Use	5
Maintenance.....	7
Lubrication	7
BE1128 Parts Breakdown	8
BE1129 Parts Breakdown	9
BE1130 Parts Breakdown	10
BE1152 Parts Breakdown	11
BE1161 Parts Breakdown	12
BE1128 Specifications	13
BE1129 Specifications	14
BE1130 Specifications	15
BE1152 Specifications	16
BE1161 Specifications	17
Optional Accessories.....	18



Controls & Terminology



BE1129 Shown



Introduction

Thank you for choosing a Bald Eagle Shooting Rest! Although each model has a few differences, they function the same way and use identical instructions for setup, operation, and maintenance.

Below are the main differences between the models:

BE1128

- Aluminum Triangle Base
- $\frac{3}{8}$ "-16 Foot Knobs

BE1129

- Aluminum Slingshot Base
- $\frac{3}{8}$ "-16 Foot Knobs

BE1130

- Cast Iron Slingshot Base
- $\frac{1}{2}$ "-13 Foot Knobs

BE1152

- Cast Iron Triangle Base
- $\frac{1}{2}$ "-13 Foot Knobs

BE1161

- Cast Iron Triangle Base
- $\frac{5}{8}$ "-11 Foot Knobs

These shooting rests have been specially designed to provide many years of trouble-free operation through close attention to detail, ruggedly built parts, and a rigid quality control program.

Please Note: The photos shown may not exactly match your model because multiple models are represented in this manual. However, the provided procedures still apply.

We stand behind our products! If you have questions about this product or its manual, please contact us for assistance.

Contact Info

Bald Eagle, Inc.
P.O. Box 2219 Bellingham, WA 98227-2219
Phone: (360) 676-3299
Email: service@bullets.com

Unpacking & Inventory

Your shooting rest was carefully packaged for safe arrival. Please inspect all components as you unpack them to ensure that they arrived in proper condition.

If you find that any components are damaged, please contact **www.bullets.com** immediately.

Box Item	Qty
A. Shooting Rest Assembly	1
B. Spanner Wrench	1
C. Hex Wrench 4mm.....	1
D. Hex T-Wrench 5mm	1

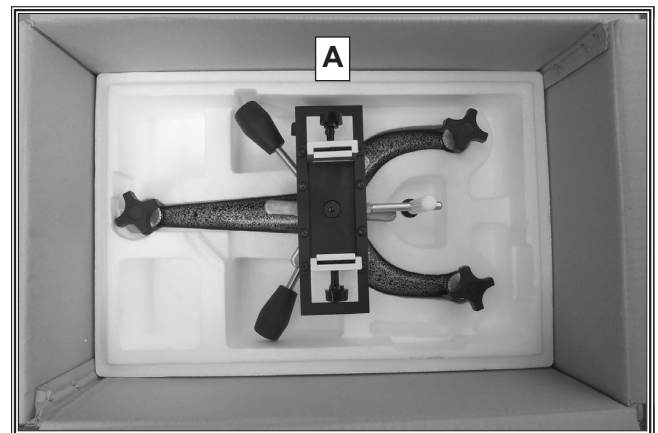


Figure 1. Shooting rest assembly in box.

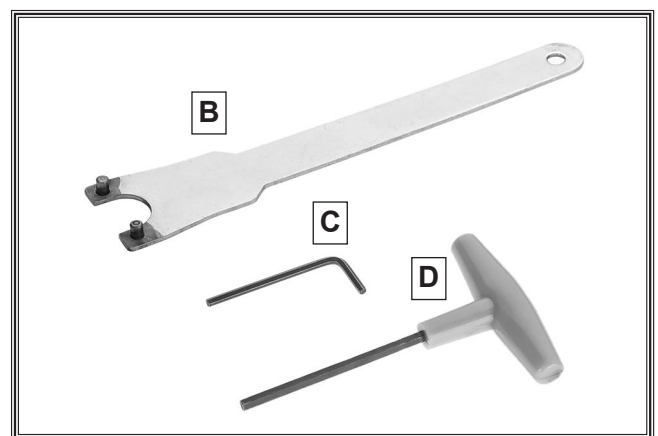


Figure 2. Included tools.

Initial Setup

Your shooting rest is fully assembled but was adjusted to fit in the box for shipping. Before using it, you will need to make a few initial setup adjustments.

To make initial setup adjustments:

1. Loosen fine elevation lock and use mariner wheel to raise cradle approximately 1", as shown in **Figure 3**. This gives you enough room to work during the next few steps.

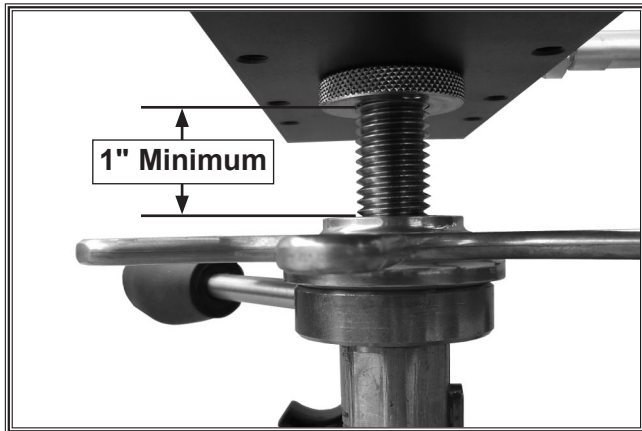


Figure 3. Fine elevation raised up at least 1".

2. Position cradle perpendicular to base (see **Figure 4**). Align keyway with fine elevation lock knob shaft, then tighten knob (see **Figure 5**).

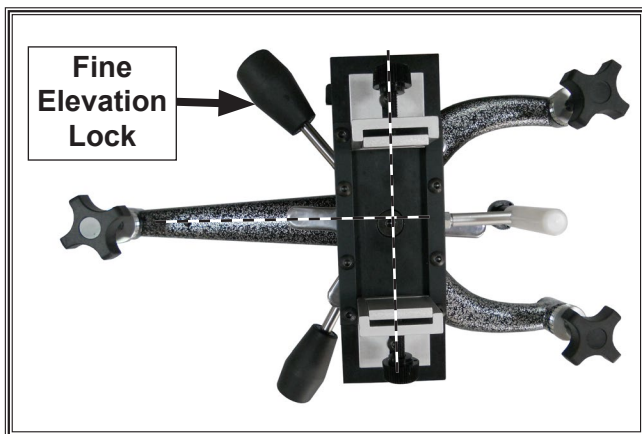


Figure 4. Cradle positioned perpendicular to base.

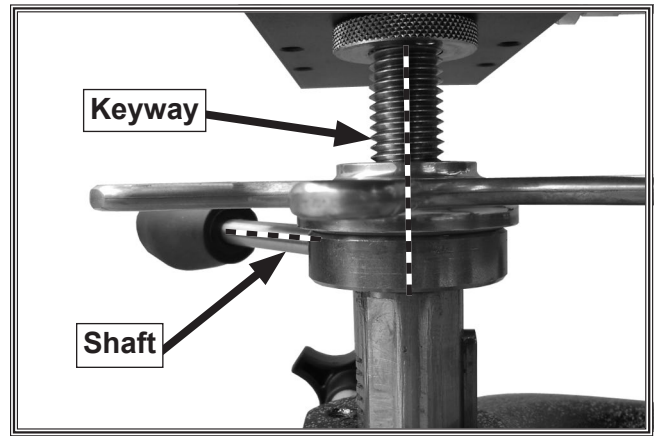


Figure 5. Keyway aligned with fine elevation lock knob shaft.

3. Using included spanner wrench, tighten knurled nut against underside of base plate, as shown in **Figure 6**.

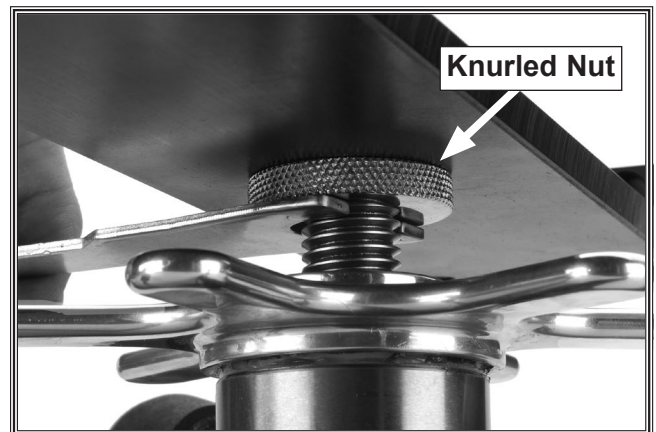


Figure 6. Tightening knurled nut with spanner wrench.

4. Check to make sure cradle is firmly secured by trying to rotate it, by hand, with light pressure.

The base plate should NOT move independently of fine elevation threads, or it will shift when subjected to shooting recoil. If you find that it does move, then re-tighten knurled nut, as shown in **Figure 6**.

Note: Besides the knurled nut, the base plate is also secured from the top with a bevel head screw (**Part #15 on Page 8**). If it becomes necessary to tighten this screw to properly secure the base plate, loosen the knurled nut first.

Congratulations! You've completed the initial setup of the shooting rest.

Before using the shooting rest, you will need to install a front rest bag (not included), and then make final adjustments at the shooting range with your rifle properly positioned in the front rest bag.

AVAILABLE BALD EAGLE FRONT BAGS

These top-quality front bags are constructed with genuine leather and ultra-tough micro-fiber fabric to ensure rugged durability and long-lasting performance. Bags are sold unfilled. Refer to figures below for dimensions. These top quality bags are available from www.bullets.com.

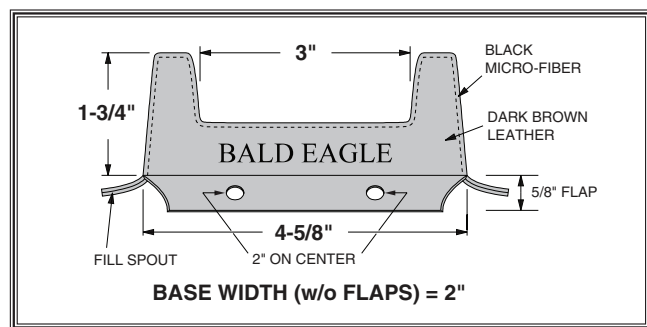


Figure 7. BE1122 3" Front Bag.

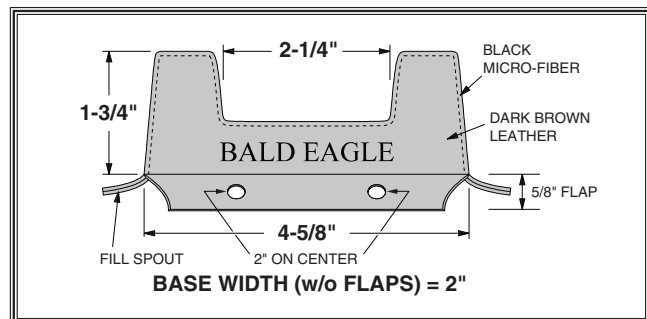


Figure 8. BE1123 2 1/4" Front Bag.

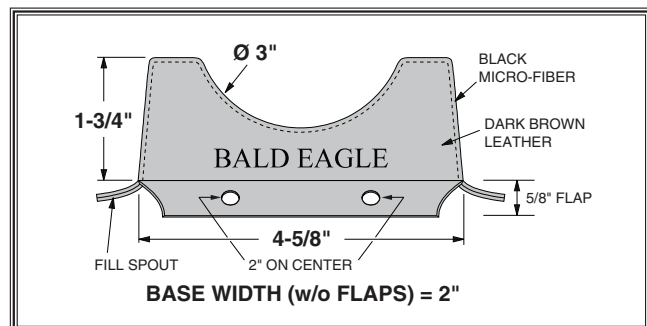


Figure 9. BE1124 Radius Front Bag.

Installing Bag

The cradle is designed to hold a front bag with a 2" W x 4 5/8" L bottom base (not including flaps).

To install front rest bag:

1. Make sure clamp shoes are adjusted straight up (not pivoted).
2. Remove (8) button head screws securing bag straps, then remove bag straps (see **Figure 10**).

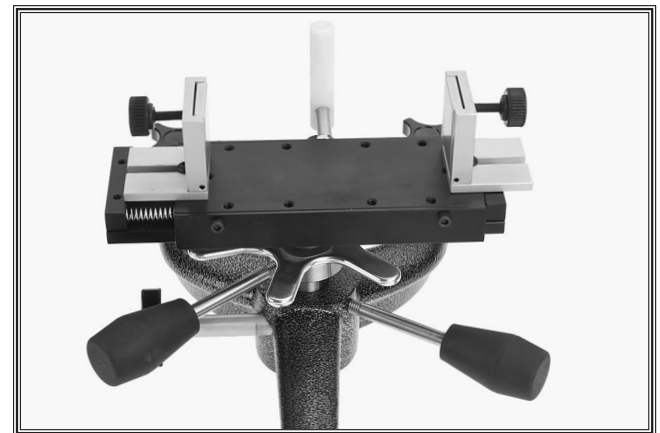


Figure 10. Bag straps removed.

3. Place bag on cradle and position it so tabs are between mounting holes for bag strap screws.
4. Re-install bag straps and tighten button head screws to secure bag in place, as shown in **Figure 11**.



Figure 11. Front rest bag installed.

Setup & Use

These instructions tell you how to set up the rest with your rifle and make adjustments while shooting at the range.

Before proceeding, make sure you have performed the previous initial setup and bag installation instructions.

WARNING

Keep firearm **UNLOADED** until instructed. Setting up rest with loaded firearm may increase risk of accidental discharge, which could result in serious injury or death.

To set up and use shooting rest:

1. Place shooting rest on bench with two feet facing target.

Note: For F-Class or long-range shooting, optional feet and long knobs are available from *Bullets.com*. See back cover of this manual for model numbers and details.

2. Adjust base height as desired by rotating the three foot knobs. After setting base height, tighten thumb nut (see **Figure 12**) to lock knob and prevent unwanted movement while shooting.

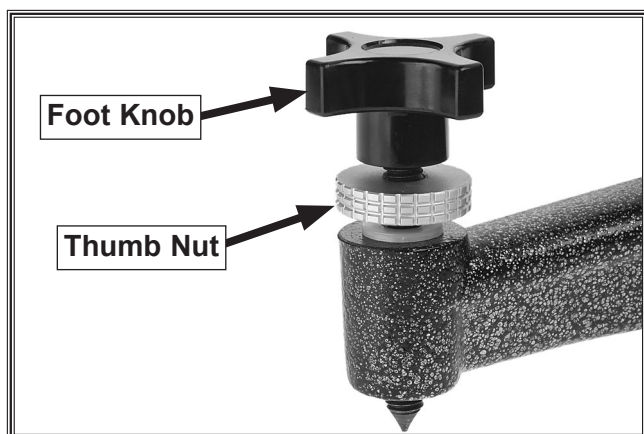


Figure 12. Foot adjustment controls.

3. Place rear bag (not included—see back cover for rear bags available from *Bullets.com*) behind the rest (toward you).
4. Insert butt of your unloaded rifle in rear bag, and place fore-end of rifle on front rest bag and against fore-end stop (the position of fore-end stop can be adjusted as desired).

Note: The fore-end stop helps you return your rifle to the exact same position after each shot.

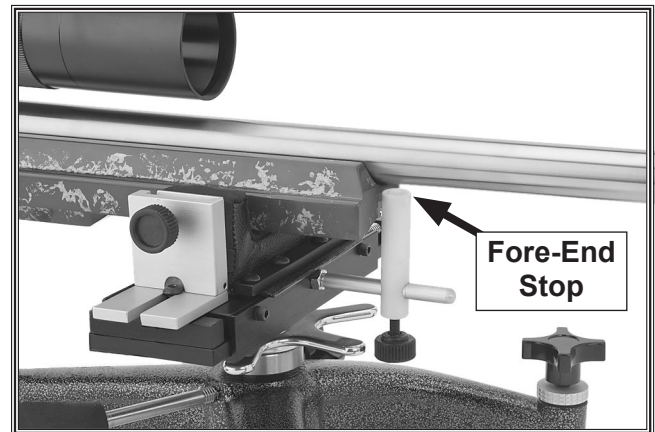


Figure 13. Fore-end stop positioned against rifle.

5. Tighten clamp shoe thumb screws to squeeze front rest bag against fore-end of rifle as desired.

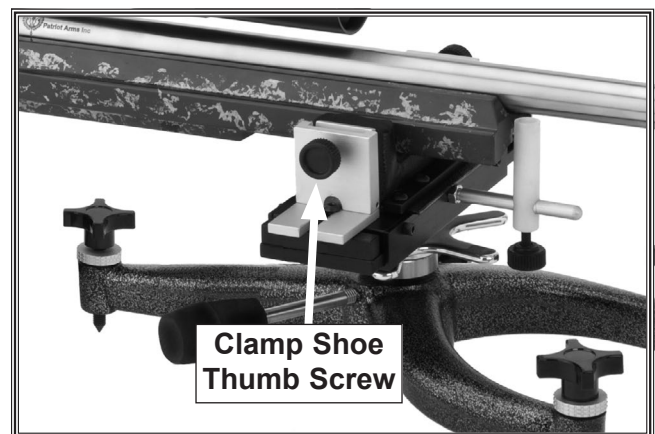


Figure 14. Rifle secured in front bag.

6. Position rest and rear bag as necessary to align your rifle sights with target, making sure fore-end of rifle remains against fore-end stop.
7. Adjust height of front rest bag as necessary using quick elevation knob. Once elevation is close to correct position, tighten quick elevation lock knob.
8. Use mariner wheel to position exact elevation of target. Snug (using light pressure only) fine elevation lock.
9. Carefully load rifle and recheck sights. Make additional fine adjustments to rest if necessary and tighten all knobs before shooting.

WARNING

To avoid serious personal injury or death, always follow safety procedures supplied by firearm manufacturer.



Figure 15. Overview of an example rifle setup on the shooting rest (BE1129 shown).

Maintenance

Your shooting rest is constructed of high-quality materials. With a small amount of care and regular maintenance, it will provide many years of reliable service.

For best results, always clean and dry the shooting rest after use. Do not allow moisture to remain on unpainted steel parts, such as lock knob shafts/threads, the quick elevation ram, or the fine elevation threads.

To prevent corrosion from developing on unpainted steel surfaces, wipe them down with a light coat of rifle oil.

Lubrication

The fine elevation threads, screw threads, and quick elevation ram will require a small amount of lubrication on an "as needed" basis.

You can use your regular rifle oil for lubrication. Since a small amount of oil may drip from the shooting rest during this procedure, we recommend that it be performed over cardboard or newspaper that can be later discarded.

To lubricate shooting rest components:

1. Raise fine and quick elevation to maximum height (see **Figure 16**).

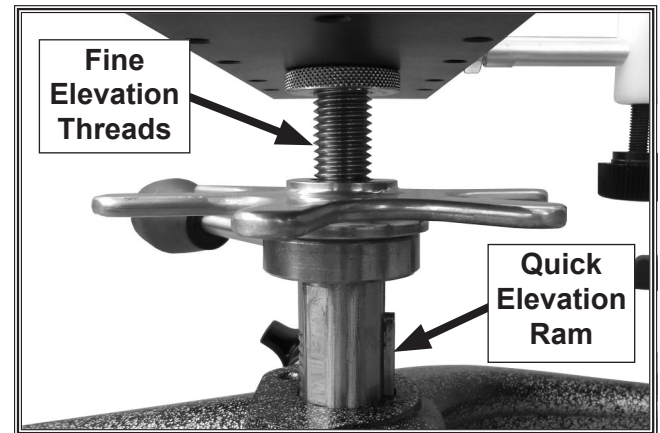


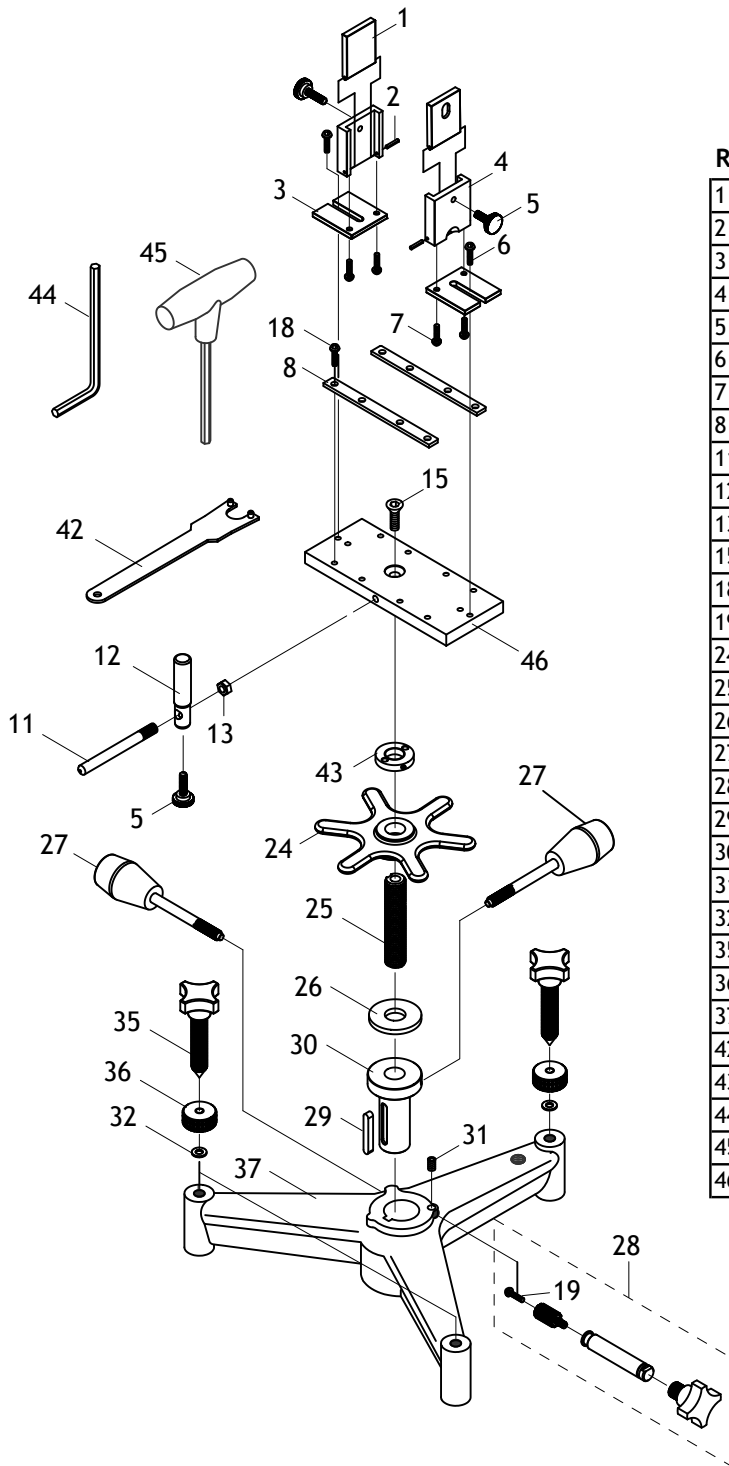
Figure 16. Oil application areas for fine and quick elevation components.

2. Lay shooting rest on its side. Using spray-type lubricant, quickly spray fine elevation threads and quick elevation ram. Turn shooting rest over and repeat this on other side.

Note: If using an oil can, apply 5-6 drops of oil along each component, and use a clean brush to spread the oil and coat the surfaces.

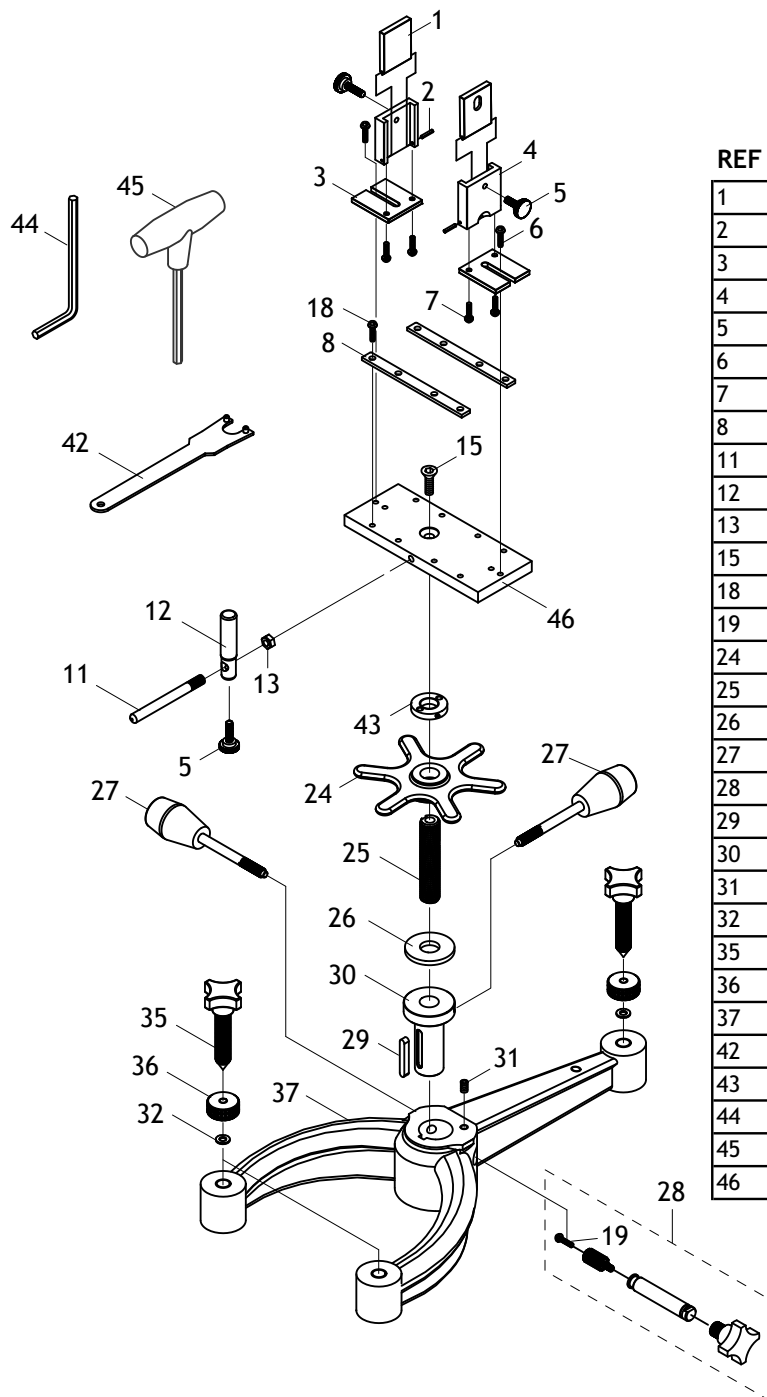
3. Set shooting rest upright and completely lower fine and quick elevation.
4. Wipe up any excess oil from shooting rest. The lubrication procedure is complete.

BE1128 Parts Breakdown



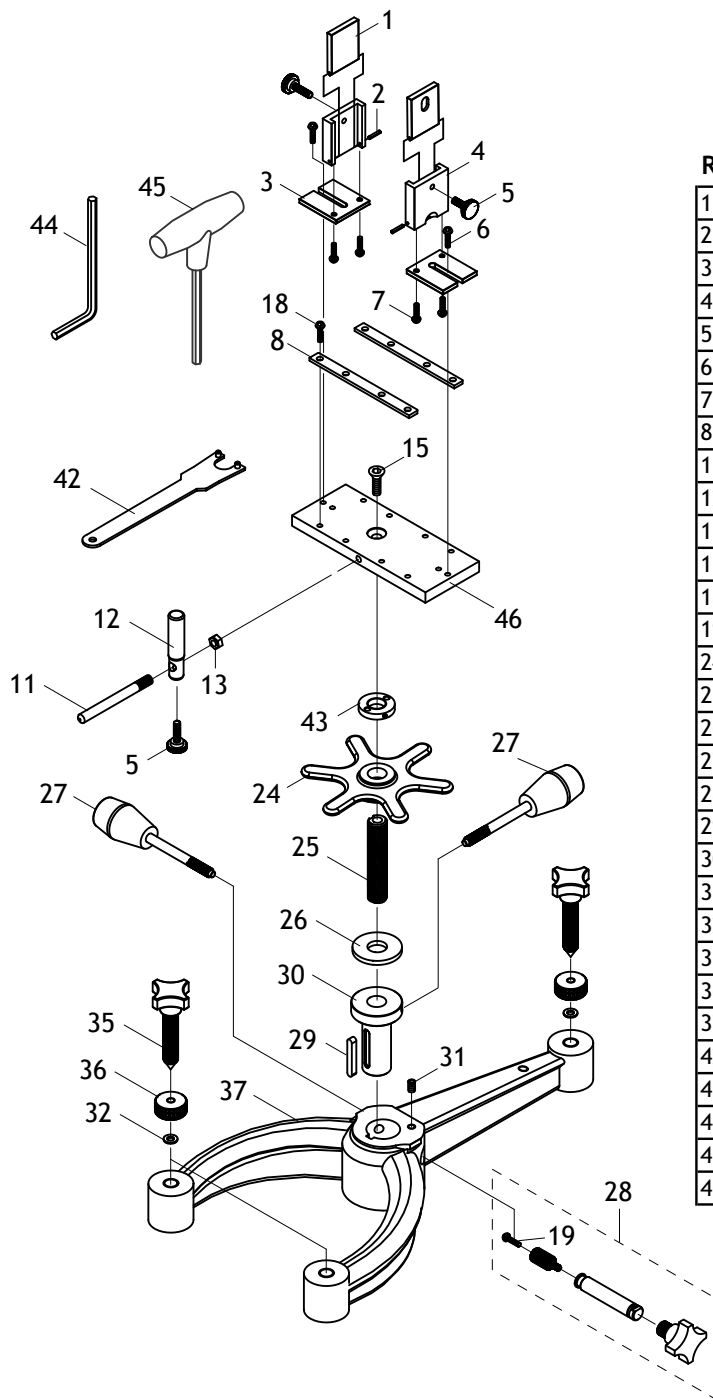
REF	PART #	DESCRIPTION
1	PBE1128001	CLAMP SHOE
2	PBE1128002	ROLL PIN 3 X 50
3	PBE1128003	ADJUSTING PLATE
4	PBE1128004	CLAMP SUPPORT
5	PBE1128005	THUMB KNOB 1/4-28 X 1-1/4
6	PBE1128006	BUTTON HD CAP SCR 1/4-20 X 1/2
7	PBE1128007	FLAT HD SCR 10-24 X 1/2
8	PBE1128008	CLAMP STRAP
11	PBE1128011	STOP POST RAIL
12	PBE1128012	STOP POST
13	PBE1128013	HEX NUT 5/16-18
15	PBE1128015	BEVEL HEAD SCREW 3/8-16 X 3/4
18	PBE1128018	BUTTON HD CAP SCR 1/4-20 X 3/4
19	PBE1128019	BUTTON HD CAP SCR 10-24 X 1/2
24	PBE1128024	MARINER WHEEL
25	PBE1128025	ELEVATION SCREW 3/4-10
26	PBE1128026	TEFLON THRUST BEARING
27	PBE1128027	LOCK KNOB 3/8-16
28	PBE1128028	ELEVATION KNOB & PINION ASSY
29	PBE1128029	KEY 1/4 X 1/4 X 1-3/4
30	PBE1128030	ELEVATION RACK
31	PBE1128031	BALL-PT SET SCREW 1/4-20 X 1/2
32	PBE1128032	TEFLON WASHER 3/8
35	PBE1128035	LEVELING SCREW 3/8-16 X 3
36	PBE1128036	LOCKING THUMB WHEEL 3/8-16
37	PBE1128037	TRIANGLE BASE, ALUMINUM
42	PBE1128042	SPANNER WRENCH
43	PBE1128043	KNURLED SPANNER NUT
44	PBE1128044	HEX WRENCH 4MM
45	PBE1128045	HEX T-WRENCH 5MM
46	PBE1128046	SLIDE

BE1129 Parts Breakdown



REF	PART #	DESCRIPTION
1	PBE1129001	CLAMP SHOE
2	PBE1129002	ROLL PIN 3 X 50
3	PBE1129003	ADJUSTING PLATE
4	PBE1129004	CLAMP SUPPORT
5	PBE1129005	THUMB KNOB 1/4-28 X 1-1/4
6	PBE1129006	BUTTON HD CAP SCR 1/4-20 X 1/2
7	PBE1129007	FLAT HD SCR 10-24 X 1/2
8	PBE1129008	CLAMP STRAP
11	PBE1129011	STOP POST RAIL
12	PBE1129012	STOP POST
13	PBE1129013	HEX NUT 5/16-18
15	PBE1129015	BEVEL HEAD SCREW 3/8-16 X 3/4
18	PBE1129018	BUTTON HD CAP SCR 1/4-20 X 3/4
19	PBE1129019	BUTTON HD CAP SCR 10-24 X 1/2
24	PBE1129024	MARINER WHEEL
25	PBE1129025	ELEVATION SCREW 3/4-10
26	PBE1129026	TEFLON THRUST BEARING
27	PBE1129027	LOCK KNOB 3/8-16
28	PBE1129028	ELEVATION KNOB & PINION ASSY
29	PBE1129029	KEY 1/4 X 1/4 X 1-3/4
30	PBE1129030	ELEVATION RACK
31	PBE1129031	BALL-PT SET SCREW 1/4-20 X 1/2
32	PBE1129032	TEFLON WASHER 1/2
35	PBE1129035	LEVELING SCREW 1/2-13 X 3
36	PBE1129036	LOCKING THUMB WHEEL 3/8-16
37	PBE1129037	SLINGSHOT BASE, ALUMINUM
42	PBE1129042	SPANNER WRENCH
43	PBE1129043	KNURLED SPANNER NUT
44	PBE1129044	HEX WRENCH 4MM
45	PBE1129045	HEX T-WRENCH 5MM
46	PBE1129046	SLIDE

BE1130 Parts Breakdown

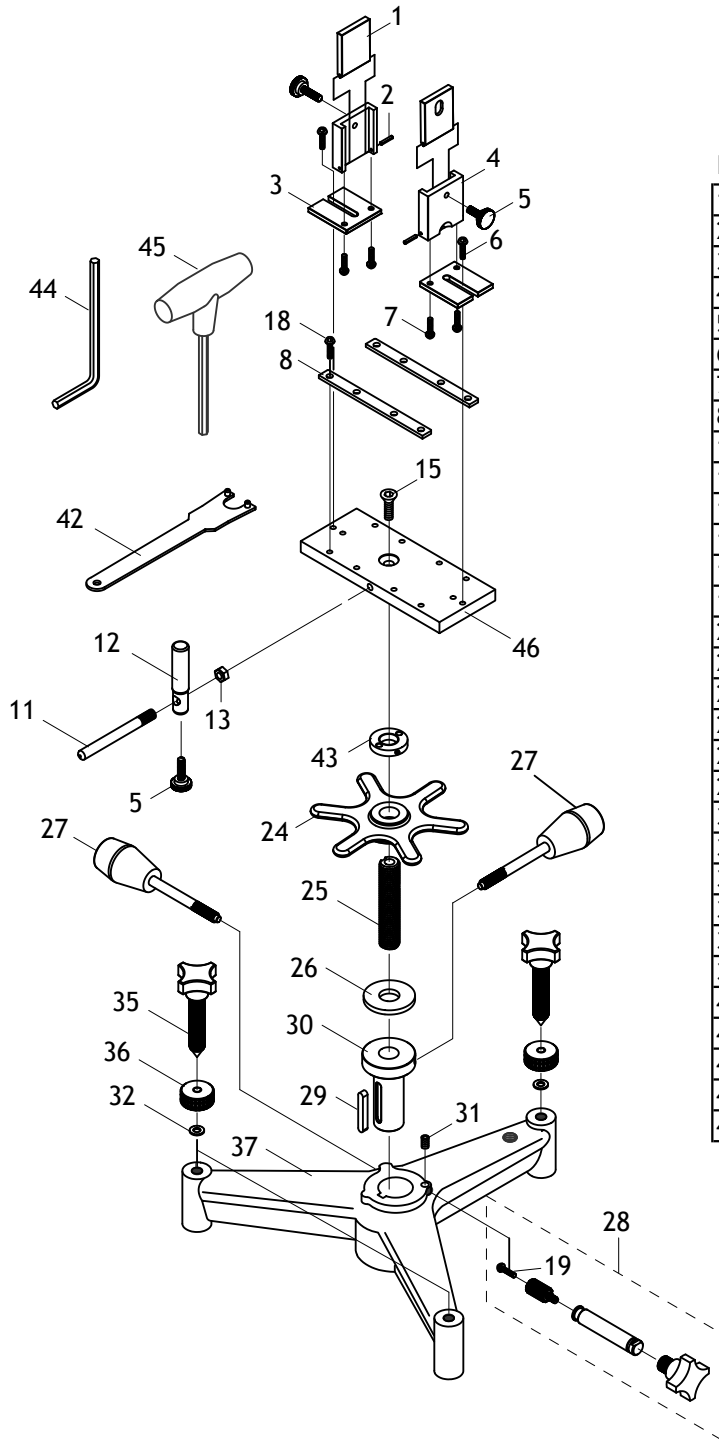


REF	PART #	DESCRIPTION
1	PBE1130001	CLAMP SHOE
2	PBE1130002	ROLL PIN 3 X 50
3	PBE1130003	ADJUSTING PLATE
4	PBE1130004	CLAMP SUPPORT
5	PBE1130005	THUMB KNOB 1/4-28 X 1-1/4
6	PBE1130006	BUTTON HD CAP SCR 1/4-20 X 1/2
7	PBE1130007	FLAT HD SCR 10-24 X 1/2
8	PBE1130008	CLAMP STRAP
11	PBE1130011	STOP POST RAIL
12	PBE1130012	STOP POST
13	PBE1130013	HEX NUT 5/16-18
15	PBE1130015	BEVEL HEAD SCREW 3/8-16 X 3/4
18	PBE1130018	BUTTON HD CAP SCR 1/4-20 X 3/4
19	PBE1130019	BUTTON HD CAP SCR 10-24 X 1/2
24	PBE1130024	MARINER WHEEL
25	PBE1130025	ELEVATION SCREW 3/4-10
26	PBE1130026	TEFLON THRUST BEARING
27	PBE1130027	LOCK KNOB 3/8-16
28	PBE1130028	ELEVATION KNOB & PINION ASSY
29	PBE1130029	KEY 1/4 X 1/4 X 1-3/4
30	PBE1130030	ELEVATION RACK
31	PBE1130031	BALL-PT SET SCREW 1/4-20 X 1/2
32	PBE1130032	TEFLON WASHER 1/2
35	PBE1130035	LEVELING SCREW 1/2-13 X 3
36	PBE1130036	LOCKING THUMB WHEEL 1/2-13
37	PBE1130037	SLINGSHOT BASE, CAST IRON
42	PBE1130042	SPANNER WRENCH
43	PBE1130043	KNURLED SPANNER NUT
44	PBE1130044	HEX WRENCH 4MM
45	PBE1130045	HEX T-WRENCH 5MM
46	PBE1130046	SLIDE



Bald Eagle™

BE1152 Parts Breakdown

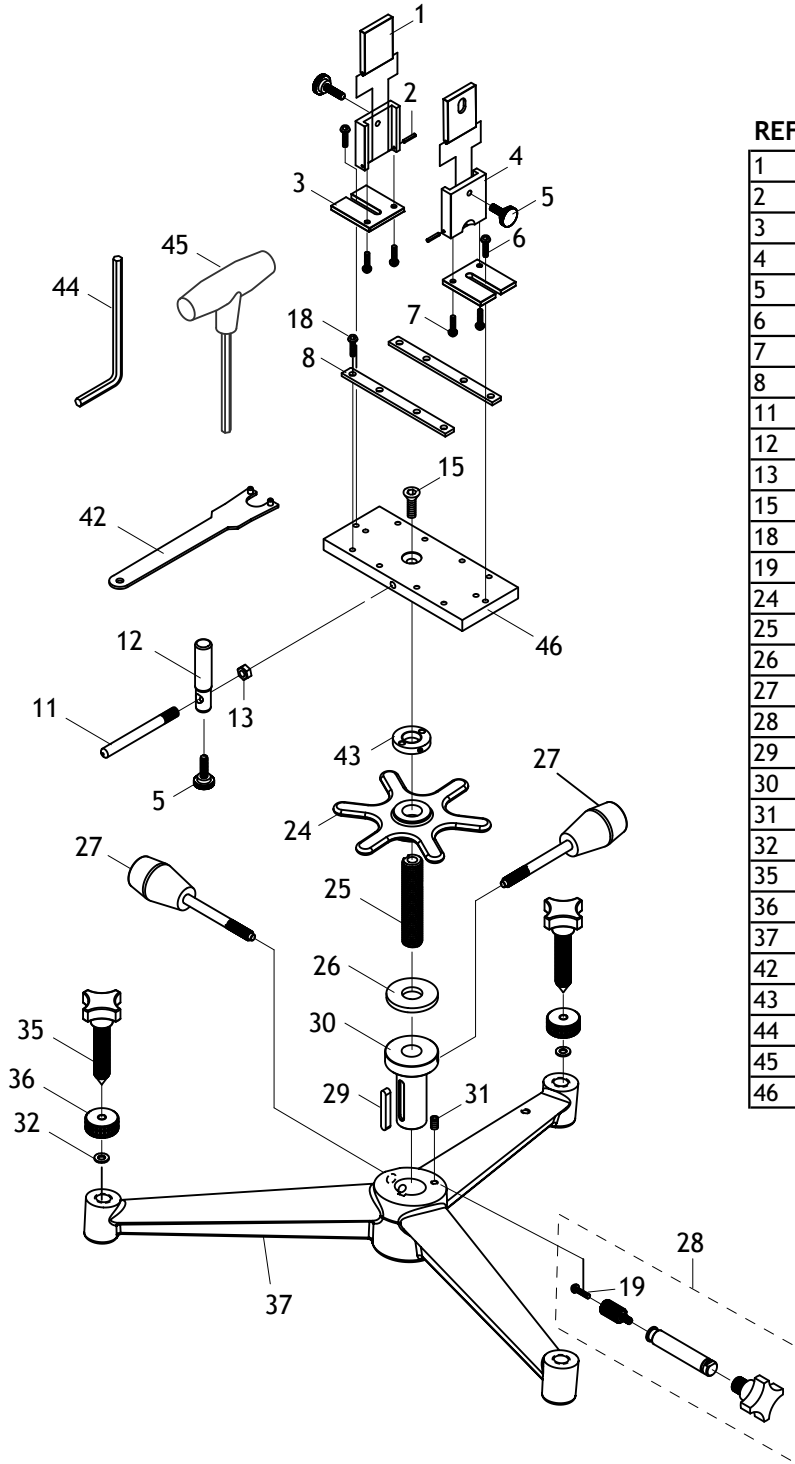


REF	PART #	DESCRIPTION
1	PBE1152001	CLAMP SHOE
2	PBE1152002	ROLL PIN 3 X 50
3	PBE1152003	ADJUSTING PLATE
4	PBE1152004	CLAMP SUPPORT
5	PBE1152005	THUMB KNOB 1/4-28 X 1-1/4
6	PBE1152006	BUTTON HD CAP SCR 1/4-20 X 1/2
7	PBE1152007	FLAT HD SCR 10-24 X 1/2
8	PBE1152008	CLAMP STRAP
11	PBE1152011	STOP POST RAIL
12	PBE1152012	STOP POST
13	PBE1152013	HEX NUT 5/16-18
15	PBE1152015	BEVEL HEAD SCREW 3/8-16 X 3/4
18	PBE1152018	BUTTON HD CAP SCR 1/4-20 X 3/4
19	PBE1152019	BUTTON HD CAP SCR 10-24 X 1/2
24	PBE1152024	MARINER WHEEL
25	PBE1152025	ELEVATION SCREW 3/4-10
26	PBE1152026	TEFLON THRUST BEARING
27	PBE1152027	LOCK KNOB 3/8-16
28	PBE1152028	ELEVATION KNOB & PINION ASSY
29	PBE1152029	KEY 1/4 X 1/4 X 1-3/4
30	PBE1152030	ELEVATION RACK
31	PBE1152031	BALL-PT SET SCREW 1/4-20 X 1/2
32	PBE1152032	TEFLON WASHER 1/2
35	PBE1152035	LEVELING SCREW 1/2-13 X 3
36	PBE1152036	LOCKING THUMB WHEEL 1/2-13
37	PBE1152037	TRIANGLE BASE (CAST-IRON)
42	PBE1152042	SPANNER WRENCH
43	PBE1152043	KNURLED SPANNER NUT
44	PBE1152044	HEX WRENCH 4MM
45	PBE1152045	HEX T-WRENCH 5MM
46	PBE1152046	SLIDE



Bald Eagle™

BE1161 Parts Breakdown



REF	PART #	DESCRIPTION
1	PBE1161001	CLAMP SHOE
2	PBE1161002	ROLL PIN 3 X 50
3	PBE1161003	ADJUSTING PLATE
4	PBE1161004	CLAMP SUPPORT
5	PBE1161005	THUMB KNOB 1/4-28 X 1-1/4
6	PBE1161006	BUTTON HD CAP SCR 1/4-20 X 1/2
7	PBE1161007	FLAT HD SCR 10-24 X 1/2
8	PBE1161008	CLAMP STRAP
11	PBE1161011	STOP POST RAIL
12	PBE1161012	STOP POST
13	PBE1161013	HEX NUT 5/16-18
15	PBE1161015	BEVEL HEAD SCREW 3/8-16 X 3/4
18	PBE1161018	BUTTON HD CAP SCR 1/4-20 X 3/4
19	PBE1161019	BUTTON HD CAP SCR 10-24 X 1/2
24	PBE1161024	MARINER WHEEL
25	PBE1161025	ELEVATION SCREW 3/4-10
26	PBE1161026	TEFLON THRUST BEARING
27	PBE1161027	LOCK KNOB 3/8-16
28	PBE1161028	ELEVATION KNOB & PINION ASSY
29	PBE1161029	KEY 1/4 X 1/4 X 1-3/4
30	PBE1161030	ELEVATION RACK
31	PBE1161031	BALL-PT SET SCREW 1/4-20 X 1/2
32	PBE1161032	TEFLON WASHER 5/8
35	PBE1161035	LEVELING SCREW 5/8-11 x 3
36	PBE1161036	LOCKING THUMB WHEEL 5/8-11
37	PBE1161037	BIG FIFTY BASE, CAST IRON
42	PBE1161042	SPANNER WRENCH
43	PBE1161043	KNURLED SPANNER NUT
44	PBE1161044	HEX WRENCH 4MM
45	PBE1161045	HEX T-WRENCH 5MM
46	PBE1161046	SLIDE



**Bald
Eagle™**

Product Specifications

Tech Support: (360) 676-3299 ~ Email: service@bullets.com ~ Website: www.bullets.com

BE1128 Triangle Shooting Rest — Aluminum

Product Dimensions

Weight..... 9 lbs.
Overall Length (Front-to-Back) 14"
Overall Width (Side-to-Side) 19½"
Overall Height 7¼" – 11⅞"
Footprint (Pin-to-Pin)..... 12¾" Triangle

Shipping Dimensions

Weight..... 15 lbs.
Box Size (L x W x H) 21" x 19" x 10"

Important Specifications

Cradle Depth (Inside of Bag Straps)..... 2"
Cradle Opening Width (Between Bag Clamp Shoes)..... 4" – 5⅜"
Minimum Bench-to-Cradle Base Height 5¼"
Maximum Bench-to-Cradle Base Height 8⅝"
Quick Elevation Travel (Primary Rise)..... 1⅞"
Fine Elevation Travel (Secondary Rise) 1⅓"
Feet Elevation Travel (Base Rise) ¾"
Fore-End Stop Height (from Cradle Base) 1⅞"
Fore-End Stop Travel..... 2¼"
Thread Size of Base Foot Knobs..... ⅜"-16

Construction Materials

Base..... Aluminum
Cradle Aluminum & Steel
Fore-End Stop..... High Density Poly-Ethylene (HDPE)

Other

Country of Origin..... Taiwan



**Bald
Eagle™**

Product Specifications

Tech Support: (360) 676-3299 ~ Email: service@bullets.com ~ Website: www.bullets.com

BE1129 Slingshot Shooting Rest — Aluminum

Product Dimensions

Weight..... 9 lbs.
Overall Length (Front-to-Back)16½"
Overall Width (Side-to-Side)17¼"
Overall Height7¼" – 11⅞"
Footprint (Pin-to-Pin).....7¼" W x 15½" L

Shipping Dimensions

Weight..... 15 lbs.
Box Size (L x W x H)22" x 15" x 11"

Important Specifications

Cradle Depth (Inside of Bag Straps).....2"
Cradle Opening Width (Between Bag Clamp Shoes).....4" – 5⅜"
Minimum Bench-to-Cradle Base Height5¼"
Maximum Bench-to-Cradle Base Height8⅝"
Quick Elevation Travel (Primary Rise).....1⅞"
Fine Elevation Travel (Secondary Rise)1⅓"
Feet Elevation Travel (Base Rise)¾"
Fore-End Stop Height (from Cradle Base)1⅞"
Fore-End Stop Travel.....2¼"
Thread Size of Base Foot Knobs.....⅜"-16

Construction Materials

Base..... Aluminum
Cradle Aluminum & Steel
Fore-End Stop..... High Density Poly-Ethylene (HDPE)

Other

Country of Origin..... Taiwan

**Bald
Eagle™**

Product Specifications

Tech Support: (360) 676-3299 ~ Email: service@bullets.com ~ Website: www.bullets.com

BE1130 Slingshot Shooting Rest — Cast Iron

Product Dimensions

Weight.....	18 lbs.
Overall Length (Front-to-Back)	16½"
Overall Width (Side-to-Side)	17¼"
Overall Height	7¼" – 11⅞"
Footprint (Pin-to-Pin).....	7⅝" W x 15⅜" L

Shipping Dimensions

Weight.....	24 lbs.
Box Size (L x W x H)	22" x 15" x 11"

Important Specifications

Cradle Depth (Inside of Bag Straps).....	2"
Cradle Opening Width (Between Bag Clamp Shoes).....	4" – 5⅜"
Minimum Bench-to-Cradle Base Height	5¼"
Maximum Bench-to-Cradle Base Height	8⅝"
Quick Elevation Travel (Primary Rise).....	1⅞"
Fine Elevation Travel (Secondary Rise)	1⅜"
Feet Elevation Travel (Base Rise)	¾"
Fore-End Stop Height (from Cradle Base)	1⅞"
Fore-End Stop Travel.....	2¼"
Thread Size of Base Foot Knobs.....	½"-13

Construction Materials

Base	Cast Iron
Cradle	Aluminum & Steel
Fore-End Stop.....	High Density Poly-Ethylene (HDPE)

Other

Country of Origin.....	Taiwan
------------------------	--------



**Bald
Eagle™**

Product Specifications

Tech Support: (360) 676-3299 ~ Email: service@bullets.com ~ Website: www.bullets.com

BE1152 Triangle Shooting Rest — Cast Iron

Product Dimensions

Weight..... 16.3 lbs.
Overall Length (Front-to-Back) 14"
Overall Width (Side-to-Side) 19½"
Overall Height 7¼" – 11⅞"
Footprint (Pin-to-Pin)..... 12¾" Triangle

Shipping Dimensions

Weight..... 21 lbs.
Box Size (L x W x H) 21" x 19" x 10"

Important Specifications

Cradle Depth (Inside of Bag Straps)..... 2"
Cradle Opening Width (Between Bag Clamp Shoes)..... 4" – 5⅜"
Minimum Bench-to-Cradle Base Height 5¼"
Maximum Bench-to-Cradle Base Height 8⅝"
Quick Elevation Travel (Primary Rise)..... 1⅞"
Fine Elevation Travel (Secondary Rise) 1 13/16"
Feet Elevation Travel (Base Rise) ¾"
Fore-End Stop Height (from Cradle Base) 1⅞"
Fore-End Stop Travel..... 2¼"
Thread Size of Base Foot Knobs..... ½"-13

Construction Materials

Base..... Cast Iron
Cradle Aluminum & Steel
Fore-End Stop..... High Density Poly-Ethylene (HDPE)

Other

Country of Origin..... Taiwan



**Bald
Eagle™**

Product Specifications

Tech Support: (360) 676-3299 ~ Email: service@bullets.com ~ Website: www.bullets.com

BE1161 Big Fifty Rest — Cast Iron

Product Dimensions

Weight.....	24 lbs.
Overall Length (Front-to-Back)	18"
Overall Width (Side-to-Side)	20"
Overall Height	7" – 11"
Footprint (Pin-to-Pin).....	18 $\frac{7}{8}$ " Triangle

Shipping Dimensions

Weight.....	30 lbs.
Box Size (L x W x H)	24" x 22" x 11"

Important Specifications

Cradle Depth (Inside of Bag Straps).....	2 $\frac{1}{2}$ "
Cradle Opening Width (Between Bag Clamp Shoes).....	4" – 8 $\frac{1}{4}$ "
Minimum Bench-to-Cradle Base Height	5"
Maximum Bench-to-Cradle Base Height	8 $\frac{3}{4}$ "
Quick Elevation Travel (Primary Rise).....	1 $\frac{7}{8}$ "
Fine Elevation Travel (Secondary Rise)	2"
Feet Elevation Travel (Base Rise)	$\frac{3}{4}$ "
Fore-End Stop Height (from Cradle Base)	2 $\frac{1}{8}$ "
Fore-End Stop Travel.....	2 $\frac{3}{8}$ "
Thread Size of Base Foot Knobs.....	$\frac{5}{8}$ "-11

Construction Materials

Base	Cast Iron
Cradle	Aluminum & Steel
Fore-End Stop.....	High Density Poly-Ethylene (HDPE)

Other

Country of Origin.....	Taiwan
------------------------	--------

Optional Accessories

In addition to the products shown below, top quality bags are available from www.bullets.com.

BE1007—3PK F-CLASS FEET (SB) BE1128-29
BE1007SS—3PK F-CLASS FEET (SS) BE1128-29
BE1120—3PK F-CLASS FEET (SB) BE1130-52
BE1213—3PK F-CLASS FEET (SB) BE1161

Available in satin black steel (SB) or polished stainless steel (SS), these optional feet install on Bald Eagle shooting rests for better support when positioning the rest in soft, uneven areas or soggy soil. Dimensions: 3" diameter, 1 $\frac{5}{8}$ " height, $\frac{3}{8}$ "-16 threaded holes on BE1007/BE1007SS, $\frac{1}{2}$ "-13 threaded holes on BE1120, and $\frac{5}{8}$ "-11 threaded holes on BE1161.

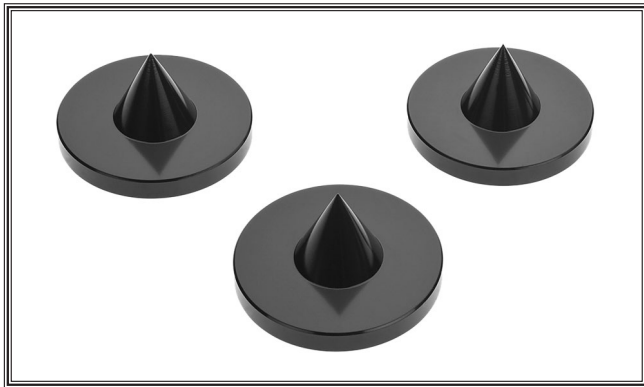


Figure 17. BE1007 F-Class Feet.

BE1008—3PK LONG SCREWS FOR BE1128-29
BE1121—3PK LONG SCREWS FOR BE1130
BE1212—3PK LONG SCREWS FOR BE1161

Used with the F-Class Feet to increase maximum height of the shooting rest by 4". Features rubber knobs. BE1008 thread size is $\frac{3}{8}$ "-16 x 4 $\frac{3}{4}$ ". BE1121 thread size is $\frac{1}{2}$ "-13 x 4 $\frac{3}{4}$ ". BE1212 thread size is $\frac{5}{8}$ "-11 x 4 $\frac{3}{4}$ ".



Figure 18. BE1008 F-Class Long Screws.

BALD EAGLE REAR BAGS

Designed with practicality and quality in mind, these high-end rear bags are world class! They were designed by a shooter for a shooter and manufactured by a shooter! The body is made of heavy top-grain two-tone leather with a convenient fill spout in the back. The ears are made of ultra-tough micro-fiber fabric that is extremely slick. Each ear has its own fill spout that easily tucks in. The built-in handle makes it easy to carry these on and off the line quickly.

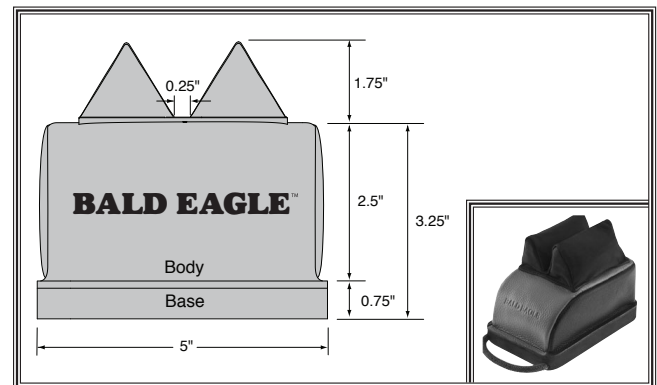


Figure 19. BE1131 7" Long Rear Bag.

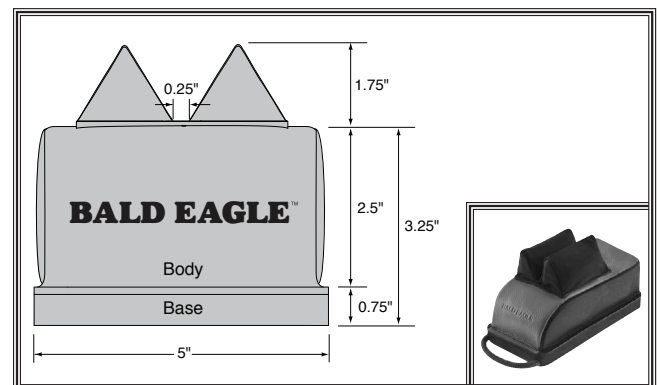


Figure 20. BE1133 9" Long Rear Bag.

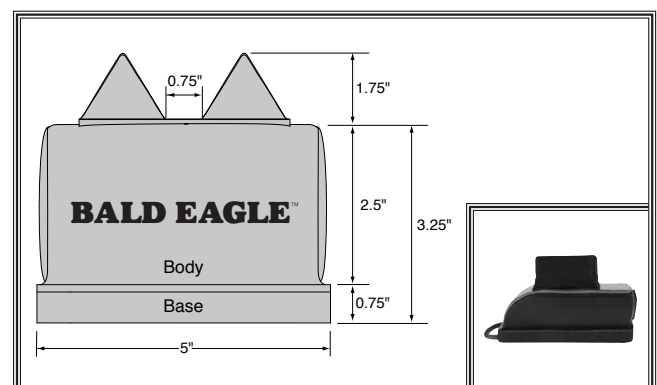


Figure 21. BE1134 9" Long Rear Bag.