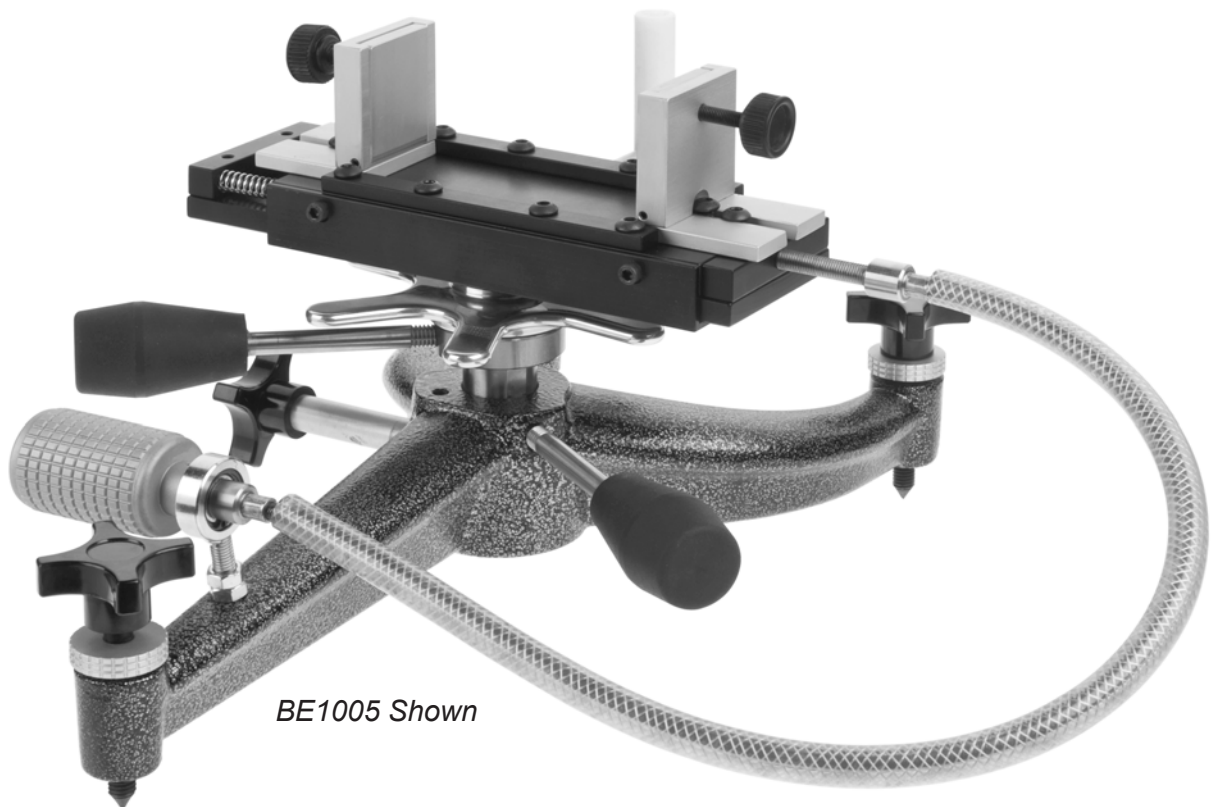




# Bald Eagle®

## MODEL BE1004-06, BE1153, BE1209 WINDAGE SHOOTING REST OWNER'S MANUAL

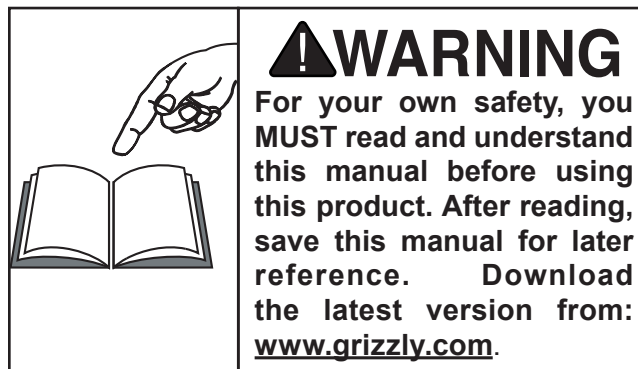


*BE1005 Shown*

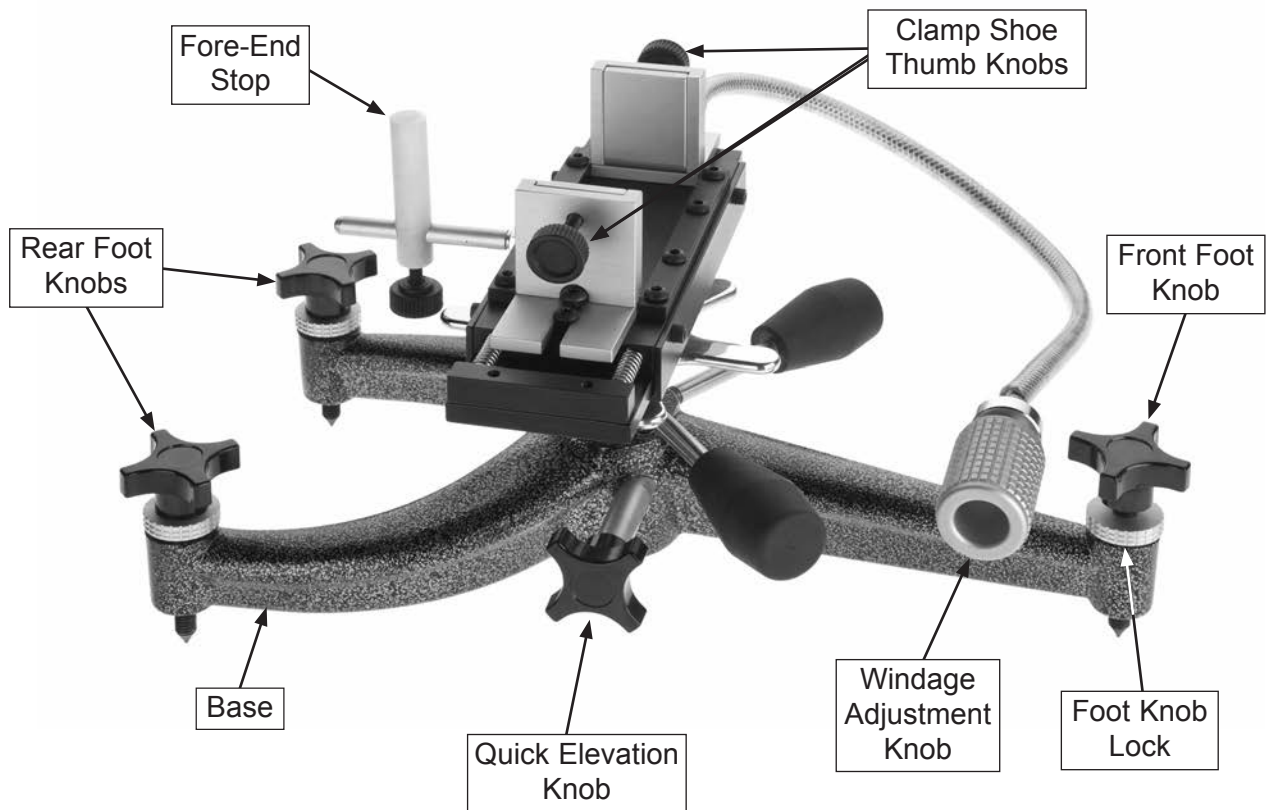
COPYRIGHT © DECEMBER, 2011 BY GRIZZLY INDUSTRIAL, INC. REVISED JULY, 2018 (BL)  
WARNING: NO PORTION OF THIS MANUAL MAY BE REPRODUCED IN ANY SHAPE OR FORM WITHOUT  
THE WRITTEN APPROVAL OF GRIZZLY INDUSTRIAL, INC.  
PHONE: (570) 546-9663 · EMAIL: TECHSUPPORT@GRIZZLY.COM · #TR14645 · PRINTED IN TAIWAN

# Table of Contents

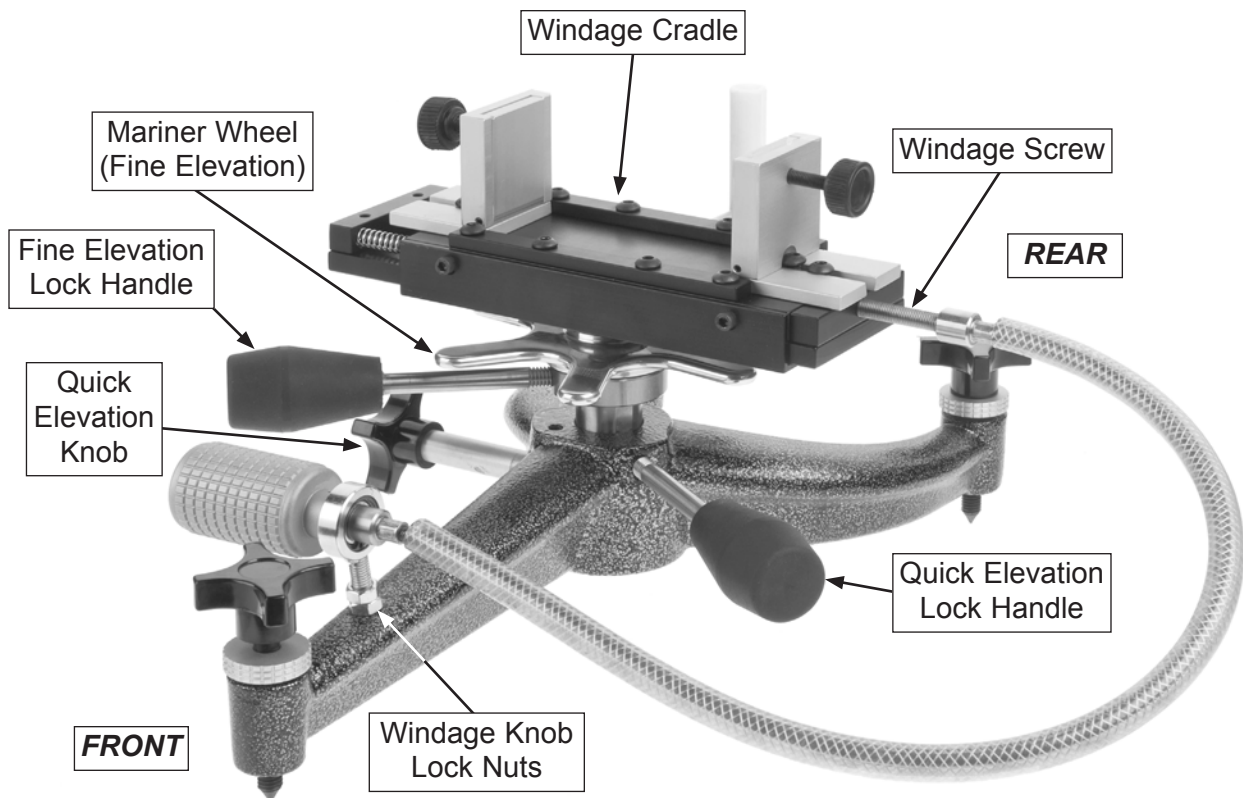
Controls & Terminology .....	1
Introduction .....	2
Unpacking & Inventory .....	2
Initial Setup .....	3
Installing Bag.....	4
Setup & Use .....	5
Conversion for Left-Handed Shooters .....	7
Maintenance.....	10
Lubrication .....	10
BE1004 Parts Breakdown .....	11
BE1005 Parts Breakdown .....	12
BE1006 Parts Breakdown .....	13
BE1153 Parts Breakdown .....	14
BE1209 Parts Breakdown .....	15
BE1004 Specifications .....	16
BE1005 Specifications .....	17
BE1006 Specifications .....	18
BE1153 Specifications .....	19
BE1209 Specifications .....	20
Optional Accessories.....	21



# Controls & Terminology



**BE1005 Shown**



# Introduction

Thank you for choosing a Bald Eagle Windage Shooting Rest! Although each model has a few differences, they function the same and use identical instructions for setup, operation, and maintenance.

**Below are the main differences between the three models:**

## BE1004

- Aluminum Triangle Base
- $\frac{3}{8}$ "-16 Foot Knobs

## BE1005

- Aluminum Slingshot Base
- $\frac{3}{8}$ "-16 Foot Knobs

## BE1006

- Cast Iron Slingshot Base
- $\frac{1}{2}$ "-13 Foot Knobs

## BE1153

- Cast Iron Triangle Base
- $\frac{1}{2}$ "-13 Foot Knobs

## BE1209

- Cast Iron Triangle Base
- $\frac{5}{8}$ "-11 Foot Knobs

These shooting rests have been specially designed to provide many years of trouble-free operation through close attention to detail, ruggedly built parts, and a rigid quality control program.

**Please Note:** The photos shown may not exactly match your model because multiple models are represented in this manual. However, the provided procedures still apply.

We stand behind our products! If you have questions about this product or its manual, please contact us for assistance.

## Contact Info

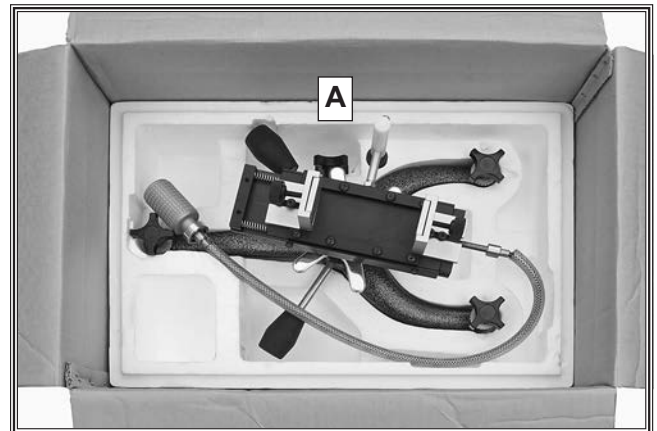
**Bald Eagle, Inc.**  
**P.O. Box 2069 Bellingham, WA 98227-2069**  
**Phone: (570) 546-9663**  
**Email: techsupport@grizzly.com**

# Unpacking & Inventory

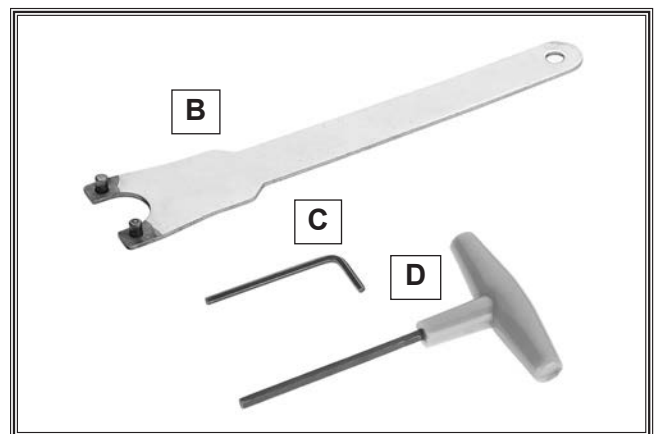
Your shooting rest was carefully packaged for safe arrival. Please inspect all components as you unpack them to ensure that they arrived in proper condition.

If you find that any components are damaged, please contact [www.grizzly.com](http://www.grizzly.com) immediately.

Box Item	Qty
A. Shooting Rest Assembly .....	1
B. Spanner Wrench .....	1
C. Hex Wrench 4mm.....	1
D. Hex T-Wrench 5mm .....	1



**Figure 1. Shooting rest assembly in box.**



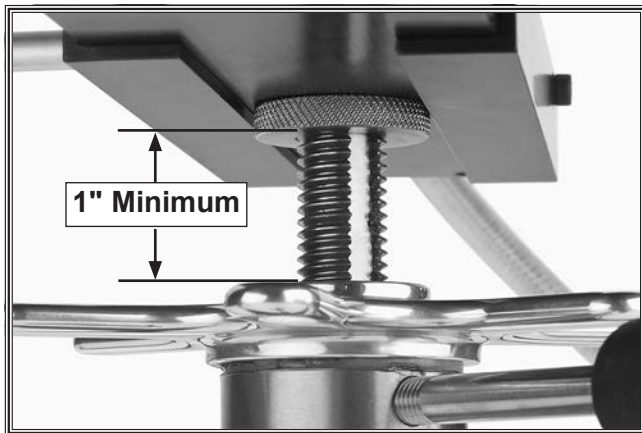
**Figure 2. Included tools.**

# Initial Setup

Your shooting rest is fully assembled but was adjusted to fit in the box for shipping. Before using it, you will need to make a few initial setup adjustments.

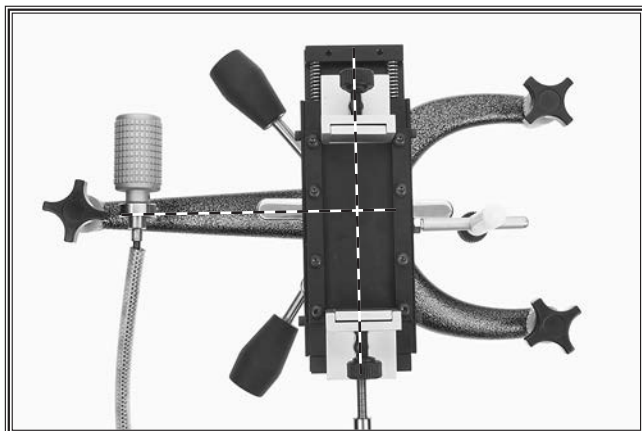
**To make the initial setup adjustments:**

1. Loosen fine elevation lock and use mariner wheel to raise windage cradle approximately 1", as shown in **Figure 3**. This gives you enough room to work during the next few steps.

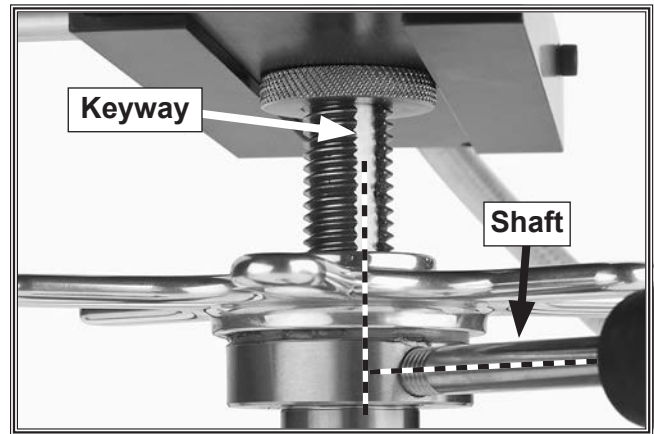


**Figure 3. Fine elevation raised up at least 1".**

2. Position windage cradle perpendicular to base (see **Figure 4**). Align keyway with fine elevation lock knob shaft, then tighten knob (see **Figure 5**).

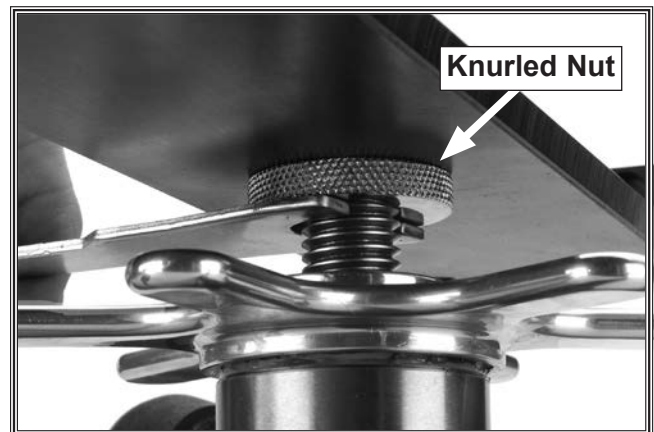


**Figure 4. Windage cradle positioned perpendicular to base.**



**Figure 5. Keyway aligned with fine elevation lock knob shaft.**

3. Using included spanner wrench, tighten knurled nut against underside of base plate, as shown in **Figure 6**.



**Figure 6. Tightening knurled nut with spanner wrench.**

4. Check to make sure windage cradle is firmly secured by trying to rotate it, by hand, with light pressure.

The windage base plate should NOT move independently of the fine elevation threads, or it will shift when subjected to shooting recoil. If you find that it does move, then re-tighten the knurled nut as shown in **Figure 6**.

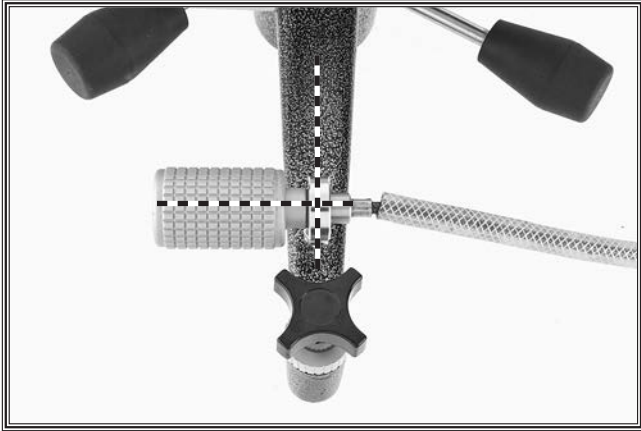
**Note:** Besides the knurled nut, the windage base plate is also secured from the top with a bevel head screw (**Part #15 on Page 8**). If it becomes necessary to tighten this screw to properly secure the base plate, loosen the knurled nut first.



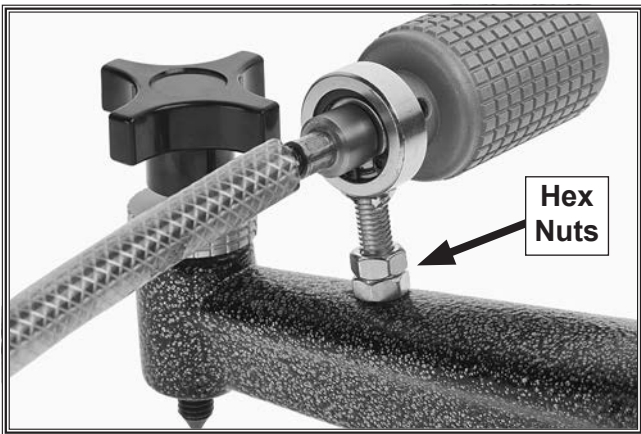


5. Position windage adjustment knob perpendicular to base (see **Figure 7**). Using a 12mm wrench, tighten lower hex nut (**Figure 8**) against base, then tighten upper hex nut against lower hex nut to lock it in place.

**Note:** For left-handed shooters, follow **Conversion for Left-Handed Shooters** instructions on **Page 7** to position the windage control knob on the right side of the base. After performing the conversion, return here.



**Figure 7. Windage adjustment knob perpendicular to base.**



**Figure 8. Hex nuts securing position of windage adjustment knob.**

Congratulations! You've completed the initial setup of the shooting rest.

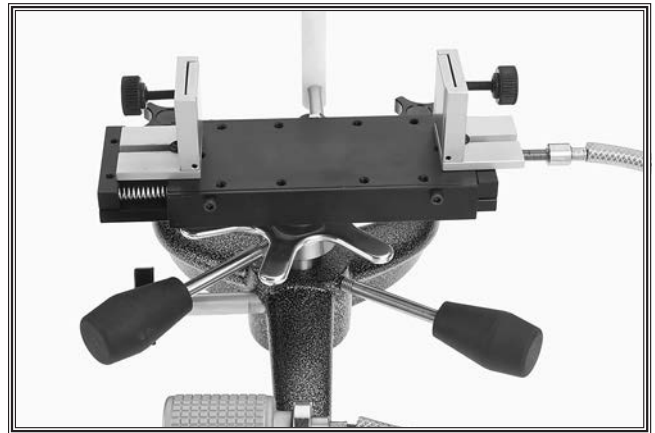
Before using the shooting rest, you will need to install a front rest bag (not included), and then make final adjustments at the shooting range with your rifle properly positioned in the front rest bag.

## Installing Bag

The windage cradle is designed to hold a front bag with a 2" W x 4<sup>3</sup>/<sub>4</sub>" L bottom base (not including flaps). Top quality bags are available from [www.grizzly.com](http://www.grizzly.com) (see back cover of manual for details).

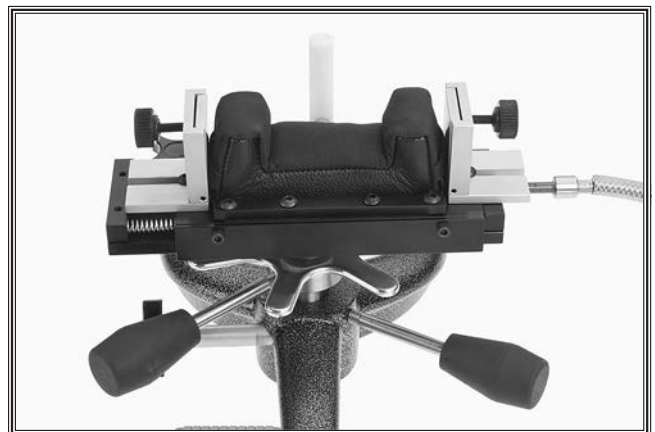
### To install a front rest bag:

1. Make sure clamp shoes are adjusted straight up (not pivoted).
2. Remove (8) button head screws securing bag clamp bars, then remove clamp bars (see **Figure 9**).



**Figure 9. Bag clamp bars removed.**

3. Place bag on windage cradle and position it so tabs are between mounting holes for clamp bar screws.
4. Re-install clamp bars and tighten button head screws to secure bag in place, as shown in **Figure 10**.



**Figure 10. Front rest bag installed.**



# Setup & Use

These instructions tell you how to set up the rest with your rifle and make adjustments while shooting at the range.

Before proceeding, make sure you have performed the previous initial setup and bag installation instructions.

## **!WARNING**

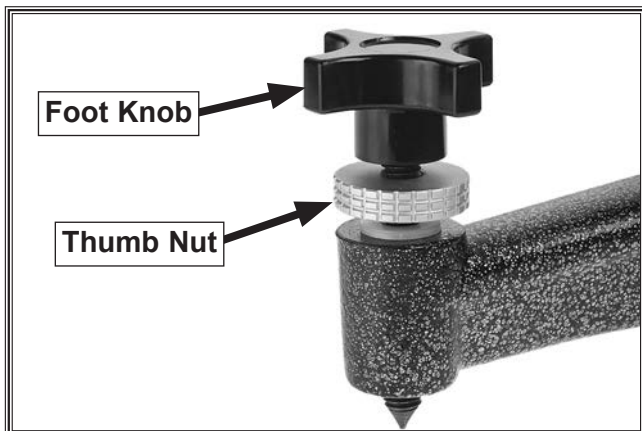
Keep firearm **UNLOADED** until instructed. Setting up rest with a loaded firearm may increase risk of accidental discharge, which could result in serious injury or death.

### To set up and use shooting rest:

1. Place shooting rest on a bench.

**Note:** For F-Class or long-range shooting, optional feet and long knobs are available from Grizzly.com. See back cover of this manual for model numbers and details.

2. Adjust base height as desired by rotating the three foot knobs. After setting base height, tighten thumb nut (see **Figure 11**) to lock knob and prevent unwanted movement while shooting.



**Figure 11. Foot adjustment controls.**

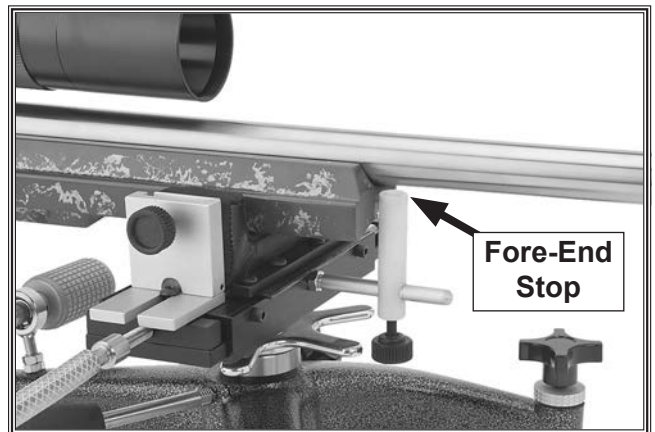
3. Adjust windage cradle by rotating windage adjustment knob until cradle is centered in its range of travel on slide. This ensures that you will be able to move it in either direction once you begin shooting.



**Figure 12. Windage cradle adjusted to center of slide.**

4. Place rear bag (not included) behind rest (toward you).
5. Insert butt of your unloaded rifle in rear bag, and place fore-end of rifle on front rest bag and against fore-end stop (the position of fore-end stop can be adjusted as desired).

**Note:** The fore-end stop helps you return your rifle to the exact same position after each shot.

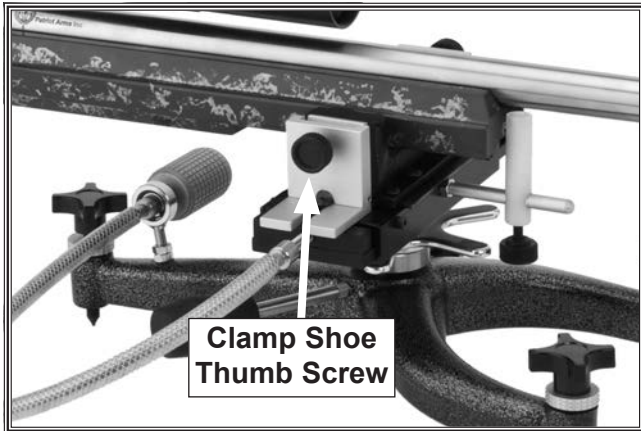


**Figure 13. Fore-end stop positioned against rifle.**



**Bald Eagle®**

6. Tighten clamp shoe thumb screws to squeeze front rest bag against fore-end of rifle as desired.



**Figure 14. Rifle secured in front bag.**

7. Position rest and rear bag as necessary to align your rifle sights with target, making sure fore-end of rifle remains against fore-end stop.

8. Adjust height of the front rest bag as necessary using quick elevation knob. Once elevation is close to correct position, tighten quick elevation lock knob.
9. Use mariner wheel to position exact elevation of target. Snug (using light pressure only) the fine elevation lock.
10. Use windage adjustment knob as necessary to make final precise adjustments.
11. Carefully load rifle and recheck sights. Make additional fine adjustments to rest if necessary and tighten all knobs before shooting.

## **! WARNING**

**To avoid serious personal injury or death, always follow the safety procedures supplied by the firearm manufacturer.**



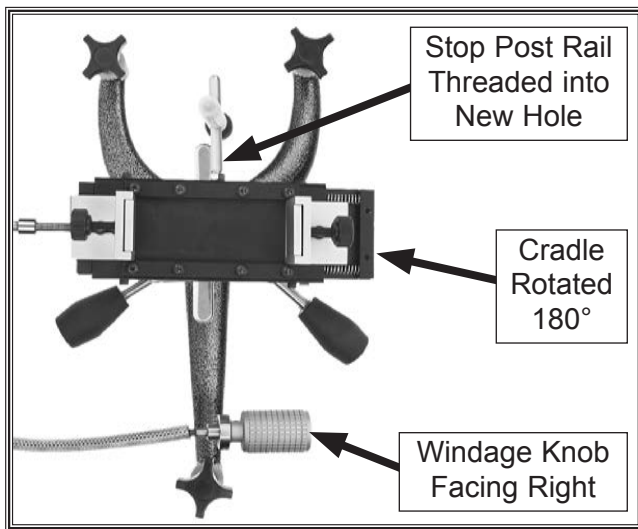
**Figure 15. Overview of an example rifle setup on the windage shooting rest (BE1005 shown).**



# Conversion for Left-Handed Shooters

Out of the box, your shooting rest is set up for right-handed shooters, meaning the windage control knob is positioned to the left so it can be adjusted with the shooter's left hand—without requiring the right hand to leave the gun.

Using this same logic, left-handed shooters may want to have the windage control knob mounted to the right, as shown in **Figure 16**. The following instructions explain how to perform the modification.

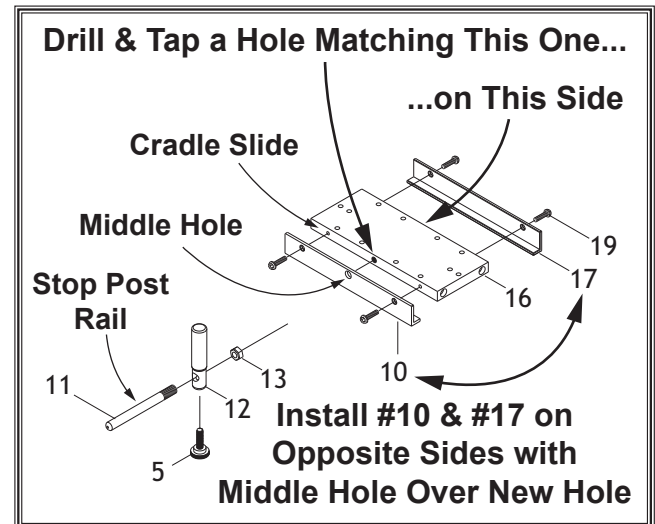


**Figure 16. Shooting rest converted for left-handed shooter.**

Tools Needed for Drilling/Tapping	Qty
• Drill Punch.....	1
• Hammer.....	1
• Drill Press.....	1
• Threading Tap $\frac{5}{16}$ "-18 and Tap Handle .....	1
• Drill Bit $\frac{17}{64}$ " (or size F).....	1
• Cutting/Tapping Oil.....	As Needed
• Vise .....	1

## Overview

The shooting rest can be converted for left-handed shooters by removing the cradle slide and all the components attached to it, drilling/tapping a new hole in the opposite side of the cradle slide for the fore-end stop post rail, and then re-installing with the cradle assembly rotated 180° from the standard setup, the windage control knob positioned to the right, and the stop post rail threaded into the new hole (see **Figures 16 and 17**).



**Figure 17. Overview of process for setting up shooting rest for left-handed shooters.**

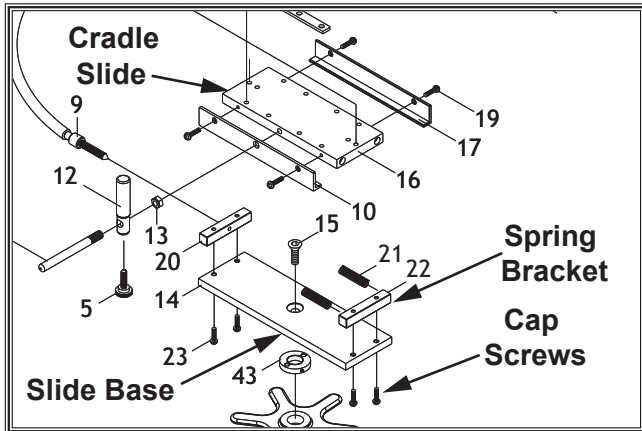
## Instructions

These instructions assume that the shooting rest has been initially set up as described beginning on **Page 3**. All part numbers referenced in the following steps are from the parts breakdown drawings in this manual. For clarity purposes, we recommend referring to the parts breakdown pages as you follow these steps.



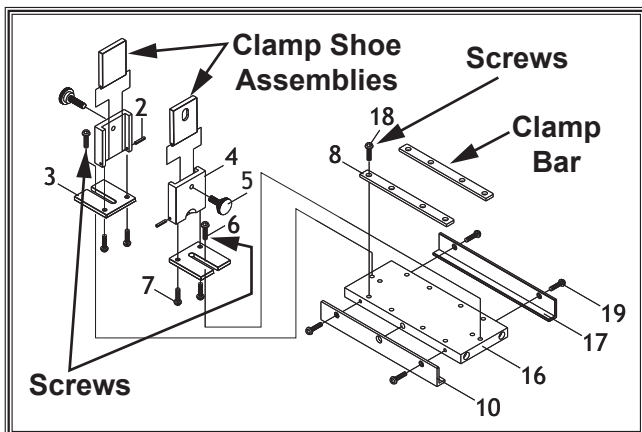
**Follow these steps to convert shooting rest for left-handed shooting:**

1. Remove cradle slide (#16) with its attached components from slide base (#14) by first adjusting windage control knob to release spring tension, then removing cap screws that secure spring bracket (#22) to slide base (#14), as shown in **Figure 18**. Once spring bracket (#22) is removed, cradle slide (#16) will easily slide off slide base (#14).



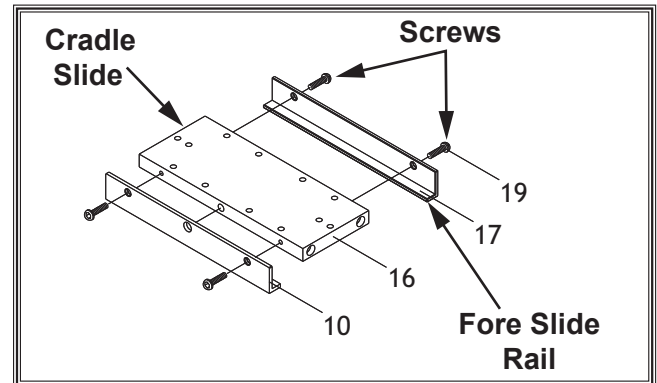
**Figure 18. Removing cradle slide from slide base.**

2. Remove screws (#6) that secure clamp shoe assemblies to cradle slide (#16), then remove screws (#18) that secure clamp bars (#8) to cradle slide. Separate clamp shoe assemblies and clamp bars from cradle slide.



**Figure 19. Removing clamp shoe and clamp bar assemblies from cradle slide.**

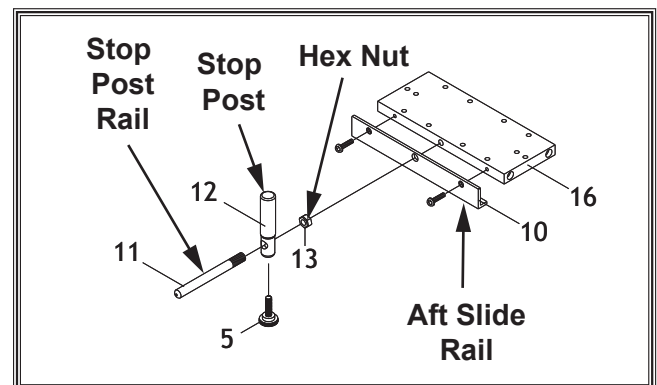
3. Remove screws (#19) that secure fore slide rail (#17) to cradle slide (#16), then separate fore slide rail from cradle slide and set it aside.



**Figure 20. Separating fore slide rail from cradle slide**

4. Loosen hex nut (#13) that secures stop post rail (#11) against aft slide rail (#10), then unthread and remove stop post rail (with the attached stop post).

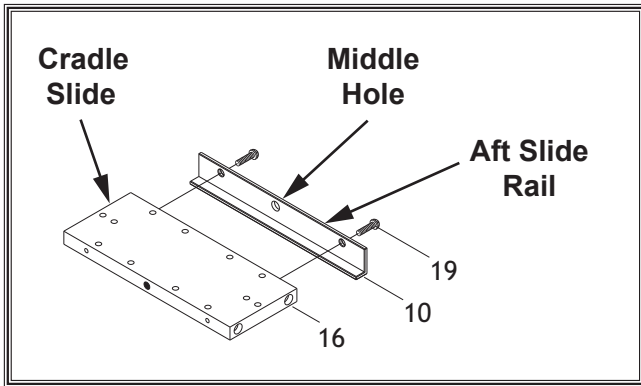
**IMPORTANT:** After removing stop post rail (#11), pay special attention to threaded hole from which it was removed. To complete this conversion procedure, you will need to duplicate this hole on opposite side of cradle slide.



**Figure 21. Location of hex nut that secures stop post rail against aft slide rail.**



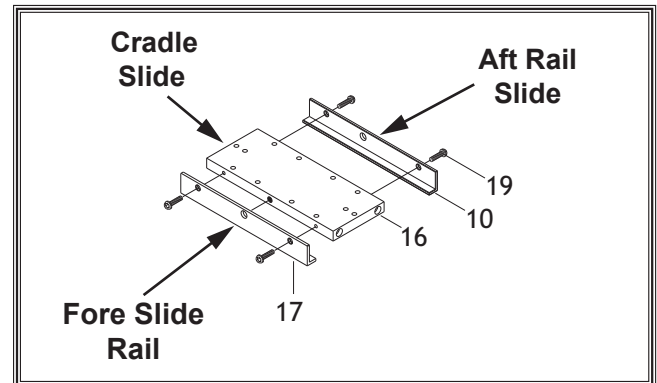
- Remove aft slide rail (#10) and install it on opposite side of cradle slide (#1), where fore slide rail was originally positioned. In the next step, you will use middle hole in aft slide rail (#10) as a guide for marking drilling location of new hole.



**Figure 22. Aft side rail installed on opposite side of cradle slide.**

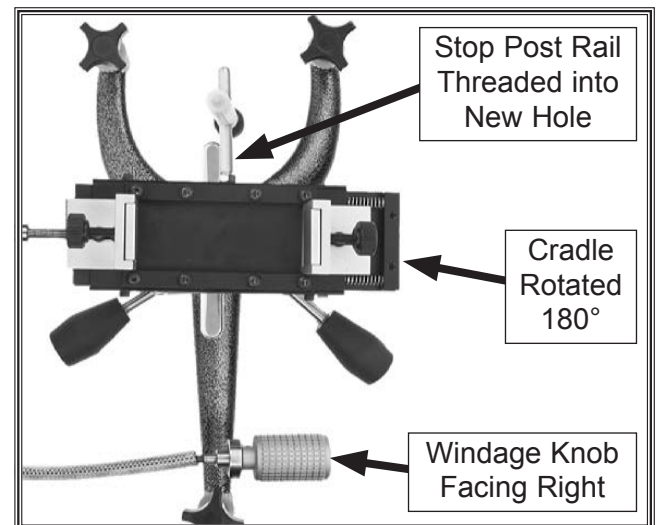
- Center tip of your drill punch in middle hole in aft slide rail (#10) and lightly strike punch with your hammer to make small indent in cradle slide (brace shooting rest and cradle as necessary during this step, so you don't damage any components). This indent will be your starting point when you drill the new hole, so take your time and make sure it is centered. Remove aft slide rail before proceeding to next step.
- Use your  $\frac{17}{64}$ " (or size F) drill bit in your drill press to drill a hole in location you marked in previous step. The depth of newly drilled hole should approximately match existing threaded hole on opposite side of cradle slide.
- Secure cradle slide in vise, and use your  $\frac{5}{16}$ "-18 threading tap with small amount of tapping/cutting oil to cut threads into new hole. When finished threading, clean out hole and clean up cradle slide.
- Install aft slide rail (#10) over newly drilled hole on cradle slide, and install fore slide rail (#17) on opposite side (see **Figure 23**).

**TIP:** Make sure that stop post rail (#11) is able to thread into new hole before proceeding. If adjustments need to be made, it is much easier to do so now—rather than after full assembly.



**Figure 23. Aft and fore slide rails installed on opposite sides.**

- Re-assemble all remaining components in reverse order of removal, but rotate cradle 180° from its original position and ensure that windage control knob is positioned to the right (see **Figure 24**), then tighten any remaining fasteners.



**Figure 24. Example of shooting rest converted for left-handed shooter.**

# Maintenance

Your shooting rest is constructed of high-quality materials. With a small amount of care and regular maintenance, it will provide many years of reliable service.

For best results, always clean and dry the shooting rest after use. Do not allow moisture to remain on unpainted steel parts, such as lock knob shafts/threads, the quick elevation ram, or the fine elevation threads.

To prevent corrosion from developing on unpainted steel surfaces, wipe them down with a light coat of rifle oil.

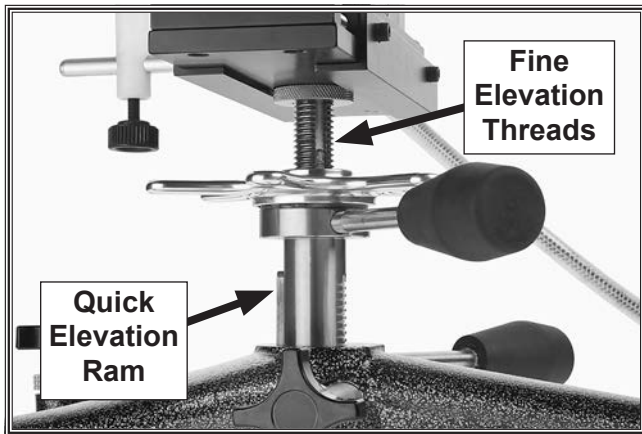
## Lubrication

The fine elevation threads, windage screw threads, and quick elevation ram will require a small amount of lubrication on an "as needed" basis.

You can use your regular rifle oil for lubrication. Since a small amount of oil may drip from the shooting rest during this procedure, we recommend that it be performed over cardboard or newspaper that can be discarded later.

### To lubricate shooting rest components:

1. Raise fine and quick elevation to maximum height (see **Figure 25**).

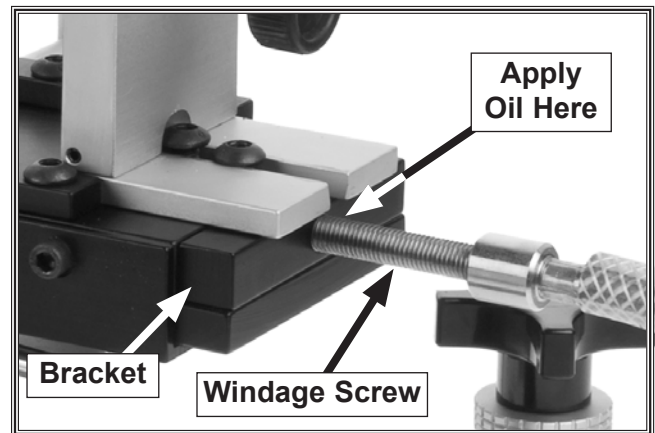


**Figure 25. Oil application areas for fine and quick elevation components.**

2. Lay shooting rest on its side. Using spray-type lubricant, quickly spray fine elevation threads and quick elevation ram. Turn shooting rest over and repeat this on other side.

**Note:** *If using an oil can, apply 5-6 drops of oil along each component, and use clean brush to spread oil and coat surfaces.*

3. Set shooting rest upright and completely lower fine and quick elevation.
4. Adjust windage knob to move windage cradle all the way to right.
5. Apply quick spray of oil (or 2 drops if using an oil can) to windage screw threads—just to right of bracket (see **Figure 26**).

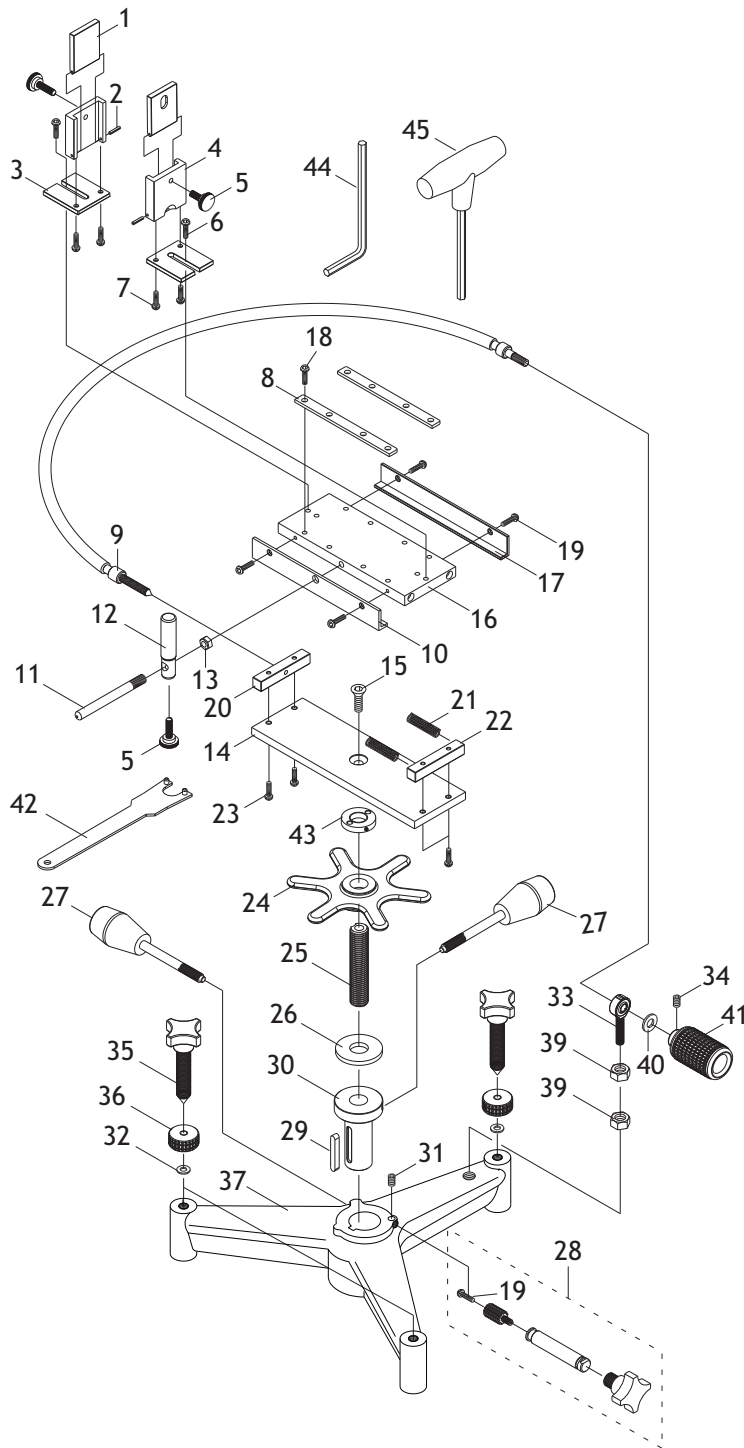


**Figure 26. Oil application area for windage screw.**

6. Adjust windage cradle all the way to the left and lubricate windage screw from left side of bracket in same manner.
7. Adjust windage cradle back to center position.
8. Wipe up any excess oil from shooting rest. The lubrication procedure is complete.

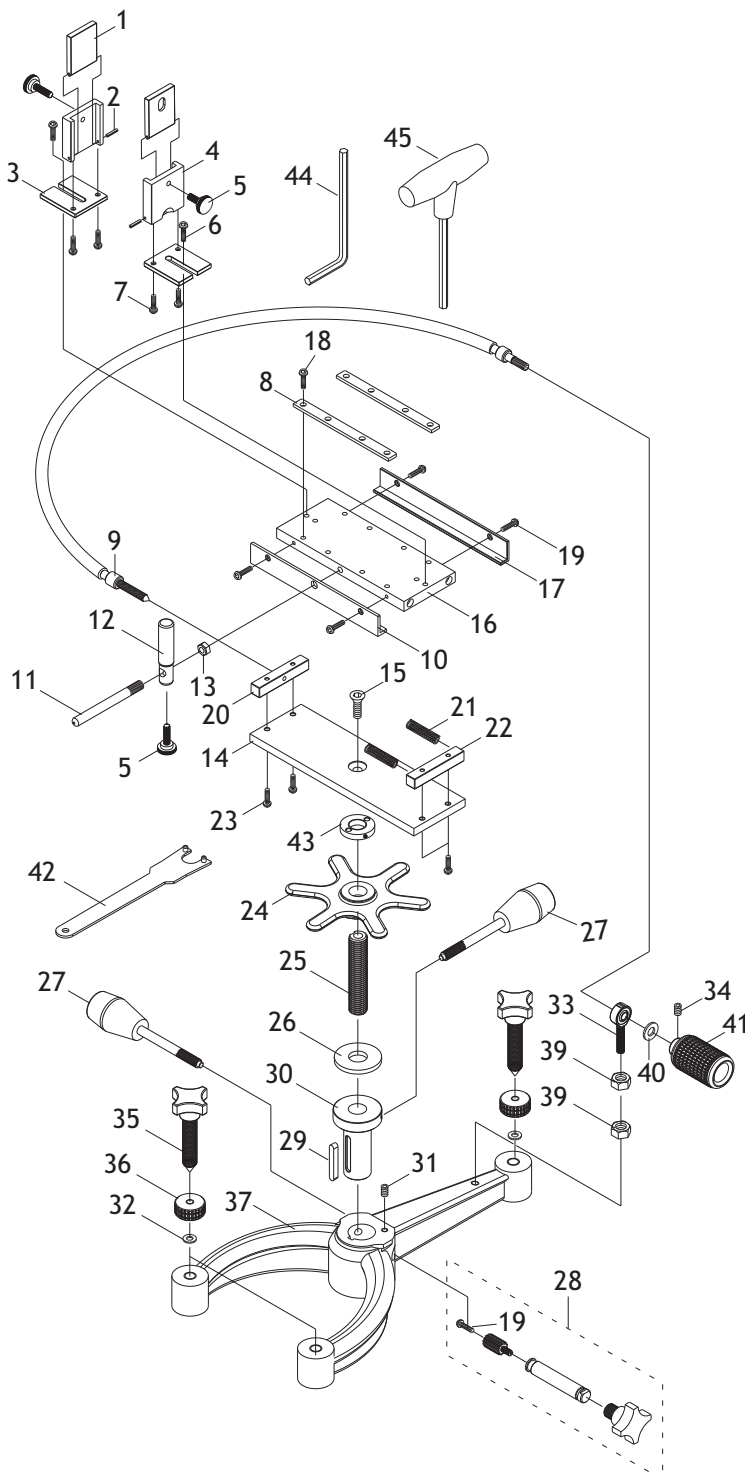


# BE1004 Parts Breakdown



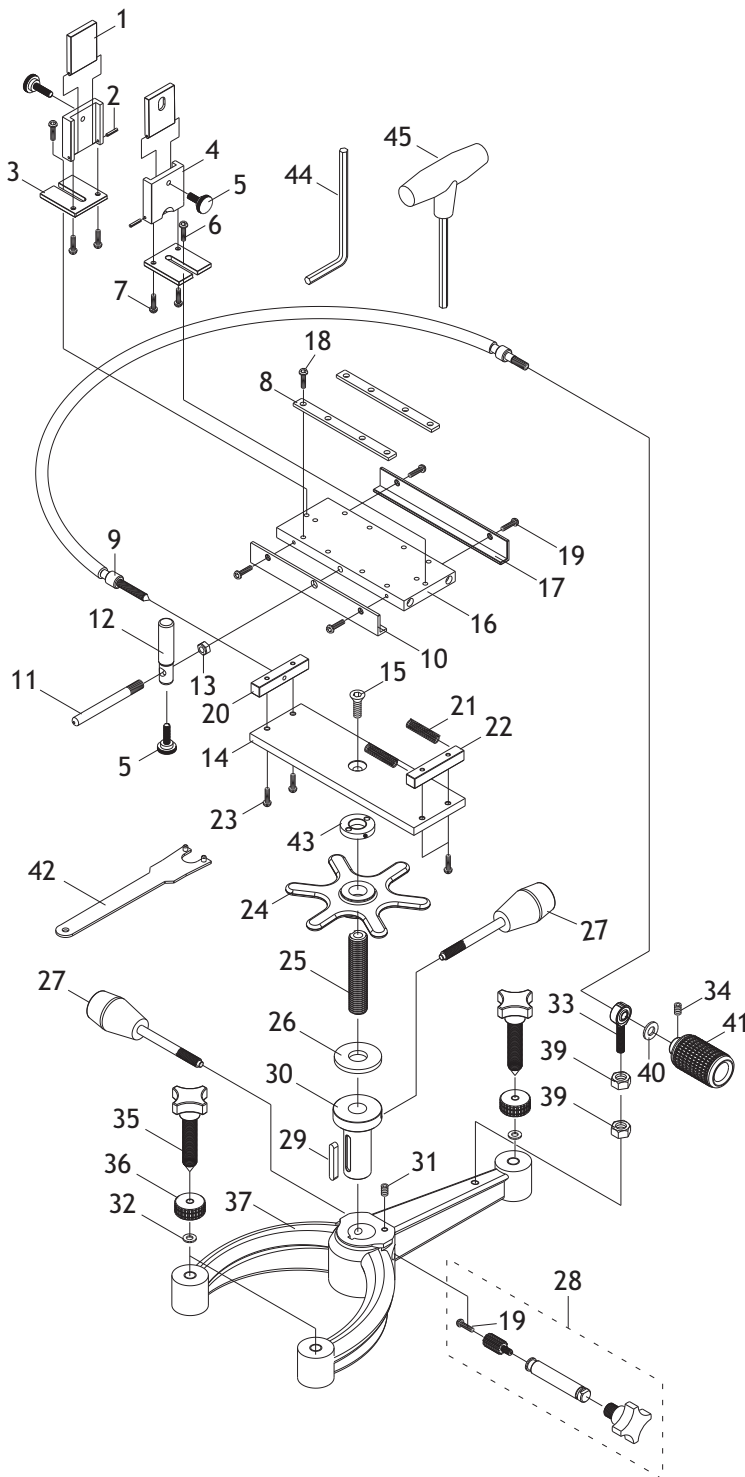
REF	PART #	DESCRIPTION
1	PBE1004001	CLAMP SHOE
2	PBE1004002	ROLL PIN 3 X 50
3	PBE1004003	ADJUSTING PLATE
4	PBE1004004	CLAMP SUPPORT
5	PBE1004005	THUMB KNOB 1/4-28 X 1-1/4
6	PBE1004006	BUTTON HD CAP SCR 1/4-20 X 1/2
7	PBE1004007	FLAT HD SCR 10-24 X 1/2
8	PBE1004008	CLAMP BAR
9	PBE1004009	DRIVE SHAFT
10	PBE1004010	AFT SLIDE RAIL
11	PBE1004011	STOP POST RAIL
12	PBE1004012	STOP POST
13	PBE1004013	HEX NUT 5/16-18
14	PBE1004014	SLIDE BASE
15	PBE1004015	FLAT HD CAP SCR 3/8-16 X 3/4
16	PBE1004016	SLIDE
17	PBE1004017	FORE SLIDE RAIL
18	PBE1004018	BUTTON HD CAP SCR 1/4-20 X 1/2
19	PBE1004019	BUTTON HD CAP SCR 10-24 X 1/2
20	PBE1004020	SLIDE ADJUST BRACKET
21	PBE1004021	COMPRESSION SPRING
22	PBE1004022	SPRING BRACKET
23	PBE1004023	BUTTON HD CAP SCR 10-24 X 1/2
24	PBE1004024	MARINER WHEEL
25	PBE1004025	ELEVATION SCREW 3/4-10
26	PBE1004026	THRUST BEARING TEFLON
27	PBE1004027	LOCK KNOB 3/8-16
28	PBE1004028	ELEVATION KNOB & PINION ASSY
29	PBE1004029	KEY 1/4 X 1/4 X 1-3/4
30	PBE1004030	ELEVATION RACK
31	PBE1004031	SET SCREW 1/4-20 X 1/2 BALL-PT
32	PBE1004032	FLAT WASHER 3/8 TEFLON
33	PBE1004033	KNOB BEARING
34	PBE1004034	SET SCREW 10-24 X 1/4
35	PBE1004035	LEVELING SCREW 3/8-16 X 3-1/2
36	PBE1004036	LOCKING THUMB WHEEL 3/8-16
37	PBE1004037	TRIANGLE BASE, ALUMINUM
39	PBE1004039	HEX NUT 5/16-18
40	PBE1004040	FLAT WASHER 5/16 TEFLON
41	PBE1004041	SLIDE KNOB
42	PBE1004042	SPANNER WRENCH 28MM PIN-TYPE
43	PBE1004043	KNURLED SPANNER NUT 3/4-10
44	PBE1004044	HEX WRENCH 4MM
45	PBE1004045	HEX T-WRENCH 5MM

# BE1005 Parts Breakdown



REF	PART #	DESCRIPTION
1	PBE1005001	CLAMP SHOE
2	PBE1005002	ROLL PIN 3 X 50
3	PBE1005003	ADJUSTING PLATE
4	PBE1005004	CLAMP SUPPORT
5	PBE1005005	THUMB KNOB 1/4-28 X 1-1/4
6	PBE1005006	BUTTON HD CAP SCR 1/4-20 X 1/2
7	PBE1005007	FLAT HD SCR 10-24 X 1/2
8	PBE1005008	CLAMP BAR
9	PBE1005009	DRIVE SHAFT
10	PBE1005010	AFT SLIDE RAIL
11	PBE1005011	STOP POST RAIL
12	PBE1005012	STOP POST
13	PBE1005013	HEX NUT 5/16-18
14	PBE1005014	SLIDE BASE
15	PBE1005015	FLAT HD CAP SCR 3/8-16 X 3/4
16	PBE1005016	SLIDE
17	PBE1005017	FORE SLIDE RAIL
18	PBE1005018	BUTTON HD CAP SCR 1/4-20 X 1/2
19	PBE1005019	BUTTON HD CAP SCR 10-24 X 1/2
20	PBE1005020	SLIDE ADJUST BRACKET
21	PBE1005021	COMPRESSION SPRING
22	PBE1005022	SPRING BRACKET
23	PBE1005023	BUTTON HD CAP SCR 10-24 X 1/2
24	PBE1005024	MARINER WHEEL
25	PBE1005025	ELEVATION SCREW 3/4-10
26	PBE1005026	THRUST BEARING TEFLON
27	PBE1005027	LOCK KNOB 3/8-16
28	PBE1005028	ELEVATION KNOB & PINION ASSY
29	PBE1005029	KEY 1/4 X 1/4 X 1-3/4
30	PBE1005030	ELEVATION RACK
31	PBE1005031	SET SCREW 1/4-20 X 1/2 BALL-PT
32	PBE1005032	FLAT WASHER 3/8 TEFLON
33	PBE1005033	KNOB BEARING
34	PBE1005034	SET SCREW 10-24 X 1/4
35	PBE1005035	LEVELING SCREW 3/8-16 X 3-1/2
36	PBE1005036	LOCKING THUMB WHEEL 3/8-16
37	PBE1005037	SLINGSHOT BASE, ALUMINUM
39	PBE1005039	HEX NUT 5/16-18
40	PBE1005040	FLAT WASHER 5/16 TEFLON
41	PBE1005041	SLIDE KNOB
42	PBE1005042	SPANNER WRENCH 28MM PIN-TYPE
43	PBE1005043	KNURLED SPANNER NUT 3/4-10
44	PBE1005044	HEX WRENCH 4MM
45	PBE1005045	HEX T-WRENCH 5MM

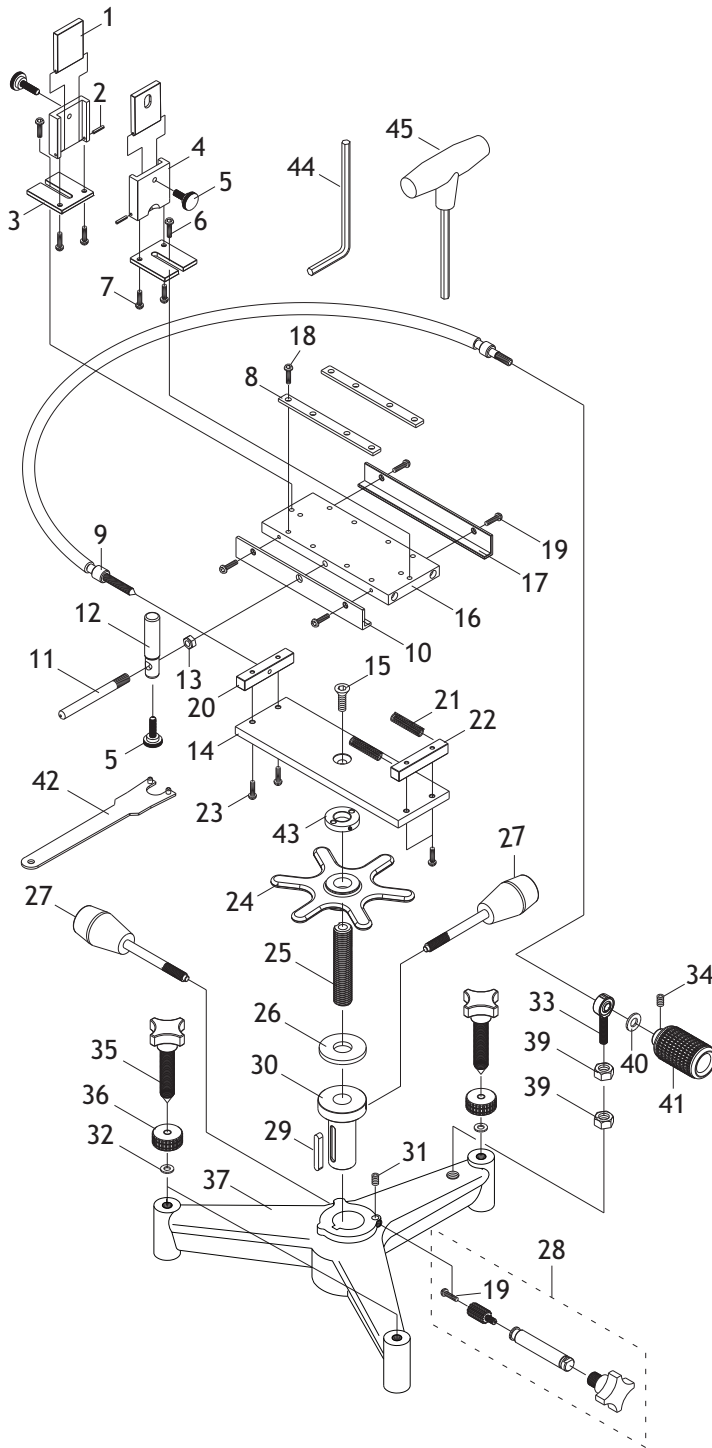
# BE1006 Parts Breakdown



REF	PART #	DESCRIPTION
1	PBE1006001	CLAMP SHOE
2	PBE1006002	ROLL PIN 3 X 50
3	PBE1006003	ADJUSTING PLATE
4	PBE1006004	CLAMP SUPPORT
5	PBE1006005	THUMB KNOB 1/4-28 X 1-1/4
6	PBE1006006	BUTTON HD CAP SCR 1/4-20 X 1/2
7	PBE1006007	FLAT HD SCR 10-24 X 1/2
8	PBE1006008	CLAMP BAR
9	PBE1006009	DRIVE SHAFT
10	PBE1006010	AFT SLIDE RAIL
11	PBE1006011	STOP POST RAIL
12	PBE1006012	STOP POST
13	PBE1006013	HEX NUT 5/16-18
14	PBE1006014	SLIDE BASE
15	PBE1006015	FLAT HD CAP SCR 3/8-16 X 3/4
16	PBE1006016	SLIDE
17	PBE1006017	FORE SLIDE RAIL
18	PBE1006018	BUTTON HD CAP SCR 1/4-20 X 1/2
19	PBE1006019	BUTTON HD CAP SCR 10-24 X 1/2
20	PBE1006020	SLIDE ADJUST BRACKET
21	PBE1006021	COMPRESSION SPRING
22	PBE1006022	SPRING BRACKET
23	PBE1006023	BUTTON HD CAP SCR 10-24 X 1/2
24	PBE1006024	MARINER WHEEL
25	PBE1006025	ELEVATION SCREW 3/4-10
26	PBE1006026	THRUST BEARING TEFLON
27	PBE1006027	LOCK KNOB 3/8-16
28	PBE1006028	ELEVATION KNOB & PINION ASSY
29	PBE1006029	KEY 1/4 X 1/4 X 1-3/4
30	PBE1006030	ELEVATION RACK
31	PBE1006031	SET SCREW 1/4-20 X 1/2 BALL-PT
32	PBE1006032	FLAT WASHER 1/2 TEFLON
33	PBE1006033	KNOB BEARING
34	PBE1006034	SET SCREW 10-24 X 1/4
35	PBE1006035	LEVELING SCREW 1/2-13 X 3-1/2
36	PBE1006036	LOCKING THUMB WHEEL 1/2-13
37	PBE1006037	SLINGSHOT BASE, CAST IRON
39	PBE1006039	HEX NUT 5/16-18
40	PBE1006040	FLAT WASHER 5/16 TEFLON
41	PBE1006041	SLIDE KNOB
42	PBE1006042	SPANNER WRENCH 28MM PIN-TYPE
43	PBE1006043	KNURLED SPANNER NUT 3/4-10
44	PBE1006044	HEX WRENCH 4MM
45	PBE1006045	HEX T-WRENCH 5MM

**Bald Eagle®**

# BE1153 Parts Breakdown



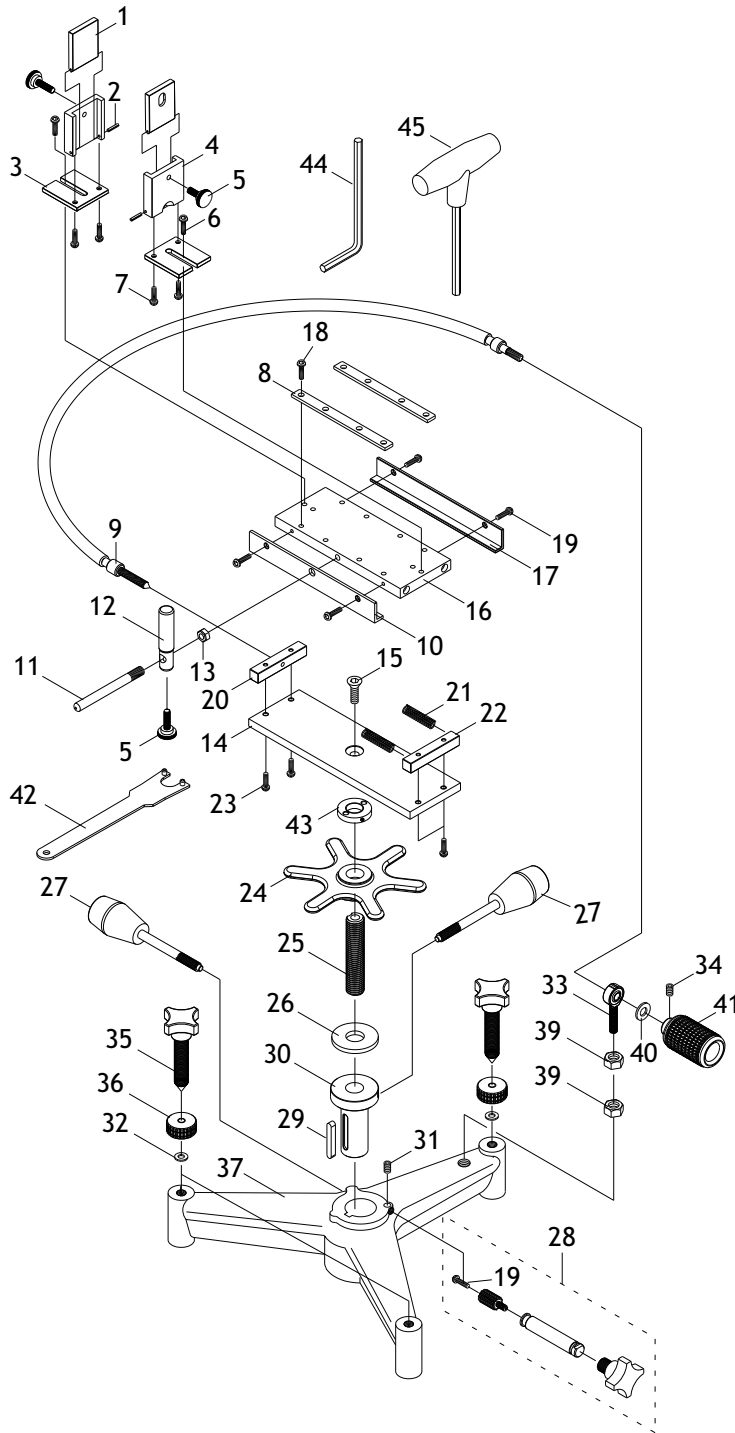
REF	PART #	DESCRIPTION
1	PBE1153001	CLAMP SHOE
2	PBE1153002	ROLL PIN 3 X 50
3	PBE1153003	ADJUSTING PLATE
4	PBE1153004	CLAMP SUPPORT
5	PBE1153005	THUMB KNOB 1/4-28 X 1-1/4
6	PBE1153006	BUTTON HD CAP SCR 1/4-20 X 1/2
7	PBE1153007	FLAT HD SCR 10-24 X 1/2
8	PBE1153008	CLAMP BAR
9	PBE1153009	DRIVE SHAFT
10	PBE1153010	AFT SLIDE RAIL
11	PBE1153011	STOP POST RAIL
12	PBE1153012	STOP POST
13	PBE1153013	HEX NUT 5/16-18
14	PBE1153014	SLIDE BASE
15	PBE1153015	FLAT HD CAP SCR 3/8-16 X 3/4
16	PBE1153016	SLIDE
17	PBE1153017	FORE SLIDE RAIL
18	PBE1153018	BUTTON HD CAP SCR 1/4-20 X 3/4
19	PBE1153019	BUTTON HD CAP SCR 10-24 X 1/2
20	PBE1153020	SLIDE ADJUST BRACKET
21	PBE1153021	COMPRESSION SPRING
22	PBE1153022	SPRING BRACKET
23	PBE1153023	BUTTON HD CAP SCR 10-24 X 1/2
24	PBE1153024	MARINER WHEEL
25	PBE1153025	ELEVATION SCREW 3/4-10
26	PBE1153026	THRUST BEARING TEFLON
27	PBE1153027	LOCK KNOB 3/8-16
28	PBE1153028	ELEVATION KNOB & PINION ASSY
29	PBE1153029	KEY 1/4 X 1/4 X 1-3/4
30	PBE1153030	ELEVATION RACK
31	PBE1153031	SET SCREW 1/4-20 X 1/2 BALL-PT
32	PBE1153032	FLAT WASHER 1/2 TEFLON
33	PBE1153033	KNOB BEARING
34	PBE1153034	SET SCREW 10-24 X 1/4
35	PBE1153035	LEVELING SCREW 1/2-13 x 3-1/2
36	PBE1153036	LOCKING THUMB WHEEL 1/2-13
37	PBE1153037	TRIANGLE BASE (CAST-IRON)
39	PBE1153039	HEX NUT 5/16-18
40	PBE1153040	FLAT WASHER 5/16 TEFLON
41	PBE1153041	SLIDE KNOB
42	PBE1153042	SPANNER WRENCH 28MM PIN-TYPE
43	PBE1153043	KNURLED SPANNER NUT 3/4-10
44	PBE1153044	HEX WRENCH 4MM
45	PBE1153045	HEX T-WRENCH 5MM





**Bald Eagle®**

# BE1209 Parts Breakdown



REF	PART #	DESCRIPTION
1	PBE1209001	CLAMP SHOE
2	PBE1209002	ROLL PIN 3 X 50
3	PBE1209003	ADJUSTING PLATE
4	PBE1209004	CLAMP SUPPORT
5	PBE1209005	THUMB KNOB 1/4-28 X 1-1/4
6	PBE1209006	BUTTON HD CAP SCR 1/4-20 X 1/2
7	PBE1209007	FLAT HD SCR 10-24 X 1/2
8	PBE1209008	CLAMP BAR
9	PBE1209009	DRIVE SHAFT
10	PBE1209010	AFT SLIDE RAIL
11	PBE1209011	STOP POST RAIL
12	PBE1209012	STOP POST
13	PBE1209013	HEX NUT 5/16-18
14	PBE1209014	SLIDE BASE
15	PBE1209015	FLAT HD CAP SCR 3/8-16 X 3/4
16	PBE1209016	WINDAGE SLIDE
17	PBE1209017	FORE SLIDE RAIL
18	PBE1209018	BUTTON HD CAP SCR 1/4-20 X 1/2
19	PBE1209019	BUTTON HD CAP SCR 10-24 X 1/2
20	PBE1209020	SLIDE ADJUST BRACKET
21	PBE1209021	COMPRESSION SPRING
22	PBE1209022	SPRING BRACKET
23	PBE1209023	BUTTON HD CAP SCR 10-24 X 1/2
24	PBE1209024	MARINER WHEEL
25	PBE1209025	ELEVATION SCREW 3/4-10
26	PBE1209026	THRUST BEARING TEFLON
27	PBE1209027	LOCK KNOB 3/8-16
28	PBE1209028	ELEVATION KNOB & PINION ASSY
29	PBE1209029	KEY 1/4 X 1/4 X 1-3/4
30	PBE1209030	ELEVATION RACK
31	PBE1209031	SET SCREW 1/4-20 X 1/2 BALL-PT
32	PBE1209032	FLAT WASHER 5/8 TEFLON
33	PBE1209033	KNOB BEARING
34	PBE1209034	SET SCREW 10-24 X 1/4
35	PBE1209035	LEVELING SCREW 5/8-11 X 3-1/2
36	PBE1209036	LOCKING THUMB WHEEL 5/8-11
37	PBE1209037	BIG FIFTY BASE, CAST IRON
39	PBE1209039	HEX NUT 5/16-18
40	PBE1209040	FLAT WASHER 5/16 TEFLON
41	PBE1209041	SLIDE KNOB
42	PBE1209042	SPANNER WRENCH 28MM PIN-TYPE
43	PBE1209043	KNURLED SPANNER NUT 3/4-10
44	PBE1209044	HEX WRENCH 4MM
45	PBE1209045	HEX T-WRENCH 5MM



**Bald Eagle®**



**Bald  
Eagle®**

# Product Specifications

Tech Support: (570) 546-9663 ~ Email: techsupport@grizzly.com ~ Website: www.grizzly.com

## BE1004 Triangle Windage Shooting Rest

### Product Dimensions

Weight .....	12 lbs.
Overall Length (Front-to-Back) .....	14"
Overall Width (Side-to-Side) .....	19½"
Overall Height .....	7¼" – 11⅞"
Footprint (Pin-to-Pin).....	12¾" Triangle

### Shipping Dimensions

Weight.....	17 lbs.
Box Size (L x W x H) .....	21" x 19" x 10"

### Windage Information

Cradle Depth (Inside of Bag Straps).....	2"
Maximum Front Bag Width .....	4¾"
Minimum Bench-to-Cradle Base Height .....	5¼"
Maximum Bench-to-Cradle Base Height .....	9½"
Horizontal Movement (Side-to-Side).....	13/16"
Quick Elevation Travel (Primary Rise).....	1⅞"
Fine Elevation Travel (Secondary Rise) .....	1 13/16"
Feet Elevation Travel (Base Rise) .....	¾"
Fore-End Stop Height (from Cradle Base) .....	1⅞"
Fore-End Stop Travel.....	2¼"
Thread Size of Base Foot Knobs.....	3/8"-16

### Construction Materials

Base.....	Aluminum
Windage Cradle .....	Aluminum & Steel
Fore-End Stop.....	High Density Poly-Ethylene (HDPE)

### Other

Country of Origin.....	Taiwan
------------------------	--------

**Bald  
Eagle®****Product  
Specifications**

Tech Support: (570) 546-9663 ~ Email: techsupport@grizzly.com ~ Website: www.grizzly.com

## **BE1005 Slingshot Windage Shooting Rest**

### **Product Dimensions**

Weight.....	12 lbs.
Overall Length (Front-to-Back) .....	16 ½"
Overall Width (Side-to-Side) .....	17 ¼"
Overall Height .....	7 ¼" – 11 ⅞"
Footprint (Pin-to-Pin).....	7 ¼" W x 15 ½" L

### **Shipping Dimensions**

Weight.....	17 lbs.
Box Size (L x W x H) .....	22" x 15" x 11"

### **Windage Information**

Cradle Depth (Inside of Bag Straps).....	2"
Maximum Front Bag Width .....	4 ¾"
Minimum Bench-to-Cradle Base Height .....	5 ¼"
Maximum Bench-to-Cradle Base Height .....	9 ½"
Horizontal Movement (Side-to-Side).....	13/16"
Quick Elevation Travel (Primary Rise).....	1 7/8"
Fine Elevation Travel (Secondary Rise) .....	1 13/16"
Feet Elevation Travel (Base Rise) .....	¾"
Fore-End Stop Height (from Cradle Base) .....	1 7/8"
Fore-End Stop Travel.....	2 ¼"
Thread Size of Base Foot Knobs.....	3/8"-16

### **Construction Materials**

Base.....	Aluminum
Windage Cradle .....	Aluminum & Steel
Fore-End Stop.....	High Density Poly-Ethylene (HDPE)

### **Other**

Country of Origin.....	Taiwan
------------------------	--------

**Bald  
Eagle®**

# Product Specifications

Tech Support: (570) 546-9663 ~ Email: techsupport@grizzly.com ~ Website: www.grizzly.com

## BE1006 Heavy-Duty Slingshot Windage Shooting Rest

### Product Dimensions

Weight.....	21 lbs.
Overall Length (Front-to-Back) .....	16½"
Overall Width (Side-to-Side) .....	17¼"
Overall Height .....	7¼" – 11⅞"
Footprint (Pin-to-Pin).....	7⅝" W x 15⅞" L

### Shipping Dimensions

Weight.....	26 lbs.
Box Size (L x W x H) .....	22" x 15" x 11"

### Windage Information

Cradle Depth (Inside of Bag Straps).....	2"
Maximum Front Bag Width .....	4¾"
Minimum Bench-to-Cradle Base Height .....	5¼"
Maximum Bench-to-Cradle Base Height .....	9½"
Horizontal Movement (Side-to-Side).....	13⅛"
Quick Elevation Travel (Primary Rise).....	1⅞"
Fine Elevation Travel (Secondary Rise) .....	1 13/16"
Feet Elevation Travel (Base Rise) .....	¾"
Fore-End Stop Height (from Cradle Base) .....	1⅞"
Fore-End Stop Travel.....	2¼"
Thread Size of Base Foot Knobs.....	1/2"-13

### Construction Materials

Base.....	Cast Iron
Windage Cradle .....	Aluminum & Steel
Fore-End Stop.....	High Density Poly-Ethylene (HDPE)

### Other

Country of Origin.....	Taiwan
------------------------	--------





**Bald Eagle®**



**Bald  
Eagle®**

## **Product Specifications**

Tech Support: (570) 546-9663 ~ Email: techsupport@grizzly.com ~ Website: www.grizzly.com

# **BE1153 Triangle Windage Shooting Rest**

### **Product Dimensions**

Weight..... 18.3 lbs.  
Overall Length (Front-to-Back) ..... 14"  
Overall Width (Side-to-Side) ..... 19½"  
Overall Height ..... 7¼" – 11⅞"  
Footprint (Pin-to-Pin)..... 12¾" Triangle

### **Shipping Dimensions**

Weight..... 23 lbs.  
Box Size (L x W x H) ..... 21" x 19" x 10"

### **Windage Information**

Cradle Depth (Inside of Bag Straps)..... 2"  
Maximum Front Bag Width ..... 5½"  
Minimum Bench-to-Cradle Base Height ..... 5¼"  
Maximum Bench-to-Cradle Base Height ..... 8⅝"  
Horizontal Movement (Side-to-Side)..... 1⅜"  
Quick Elevation Travel (Primary Rise)..... 1⅞"  
Fine Elevation Travel (Secondary Rise) ..... 1⅜"  
Feet Elevation Travel (Base Rise) ..... ¾"  
Fore-End Stop Height (from Cradle Base) ..... 1⅞"  
Fore-End Stop Travel..... 2¼"  
Thread Size of Base Foot Knobs..... ½"-13

### **Construction Materials**

Base..... Cast Iron  
Windage Cradle ..... Aluminum & Steel  
Fore-End Stop..... High Density Poly-Ethylene (HDPE)

### **Other**

Country of Origin..... Taiwan

**Bald  
Eagle®**

# Product Specifications

Tech Support: (570) 546-9663 ~ Email: techsupport@grizzly.com ~ Website: www.grizzly.com

## BE1209 Big Fifty Rest w/Windage — Cast Iron

### Product Dimensions

Weight .....	27 lbs.
Overall Length (Front-to-Back) .....	18"
Overall Width (Side-to-Side) .....	20"
Overall Height .....	7" – 11"
Footprint (Pin-to-Pin) .....	18 $\frac{7}{8}$ " Triangle

### Shipping Dimensions

Weight .....	33 lbs.
Box Size (L x W x H) .....	24" x 22" x 11"

### Important Specifications

Cradle Depth (Inside of Bag Hold Down Straps) .....	2 $\frac{1}{2}$ "
Maximum Front Bag Width .....	8 $\frac{1}{4}$ "
Minimum Bench-to-Cradle Base Height .....	5"
Maximum Bench-to-Cradle Base Height .....	8 $\frac{3}{4}$ "
Horizontal Movement (Side-to-Side) .....	1 $\frac{13}{16}$ "
Quick Elevation Travel (Primary Rise) .....	1 $\frac{7}{8}$ "
Fine Elevation Travel (Secondary Rise) .....	2"
Feet Elevation Travel (Base Rise) .....	$\frac{3}{4}$ "
Fore-End Stop Height (from Cradle Base) .....	2 $\frac{1}{8}$ "
Fore-End Stop Travel .....	2 $\frac{3}{8}$ "
Thread Size of Base Foot Knobs .....	$\frac{5}{8}$ "-11

### Construction Materials

Base .....	Cast Iron
Cradle .....	Aluminum & Steel
Fore-End Stop .....	High Density Poly-Ethylene (HDPE)

### Other

Country of Origin .....	Taiwan
-------------------------	--------

# Optional Accessories

In addition to the products shown below, top quality bags are available from [www.grizzly.com](http://www.grizzly.com).

**BE1007—3PK F-CLASS FEET (SB) BE1004-5**  
**BE1007SS—3PK F-CLASS FEET (SS) BE1004-5**  
**BE1120—3PK F-CLASS FEET (SB) BE1006-53**  
**BE1213—3PK F-CLASS FEET (SB) BE1209**

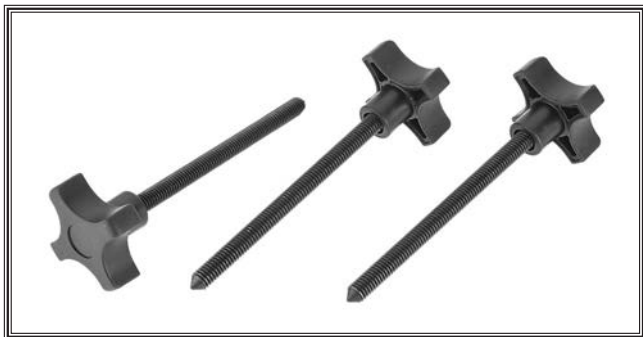
Available in satin black steel (SB) or polished stainless steel (SS), these optional feet install on Bald Eagle windage shooting rests for better support when positioning the rest in soft, uneven areas or soggy soil. Dimensions: 3" diameter, 1<sup>5</sup>/<sub>8</sub>" height, 3/8"-16 threaded holes on BE1007/ BE1007SS, 1/2"-13 threaded holes on BE1120, and 5/8"-11 threaded holes on BE1209.



**Figure 27. BE1007 F-Class Feet.**

**BE1008—3PK LONG SCREWS FOR BE1004-5**  
**BE1121—3PK LONG SCREWS FOR BE1006-53**  
**BE1212—3PK LONG SCREWS FOR BE1209**

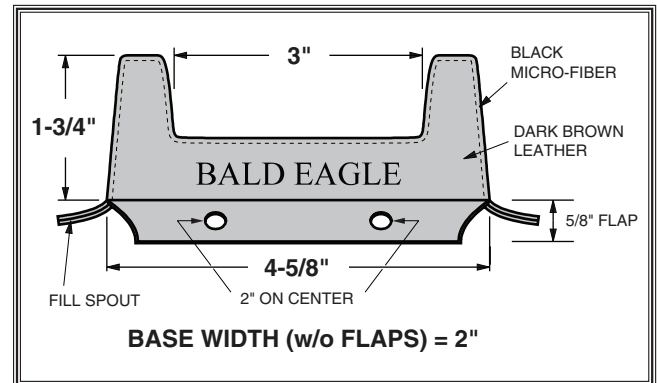
Used with the F-Class Feet to increase maximum height of the shooting rest by 4". Features rubber knobs. BE1008 thread size is 3/8"-16 x 4<sup>3</sup>/<sub>4</sub>". BE1121 thread size is 1/2"-13 x 4<sup>3</sup>/<sub>4</sub>". BE1212 thread size is 5/8"-11 x 4<sup>3</sup>/<sub>4</sub>".



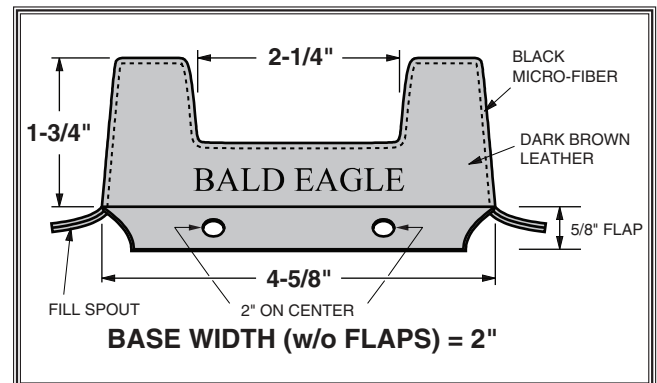
**Figure 28. BE1008 F-Class Long Screws.**

## BALD EAGLE FRONT BAGS

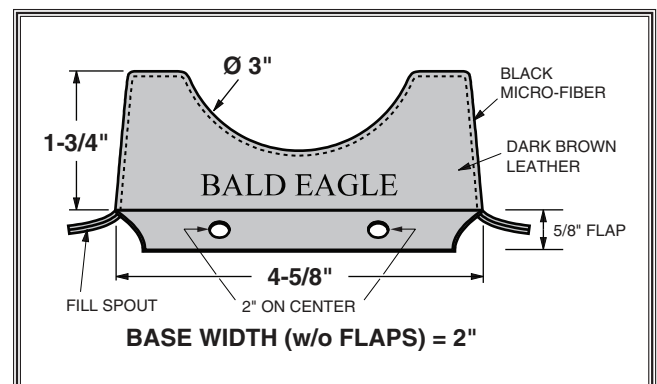
These top-quality front bags are constructed with genuine leather and ultra-tough micro-fiber fabric to ensure rugged durability and long-lasting performance. Bags are sold unfilled. Refer to figures below for dimensions. Fit models BE1004-6, and BE1153.



**Figure 29. BE1122 3" Front Bag.**



**Figure 30. BE1123 2<sup>1</sup>/<sub>4</sub>" Front Bag.**



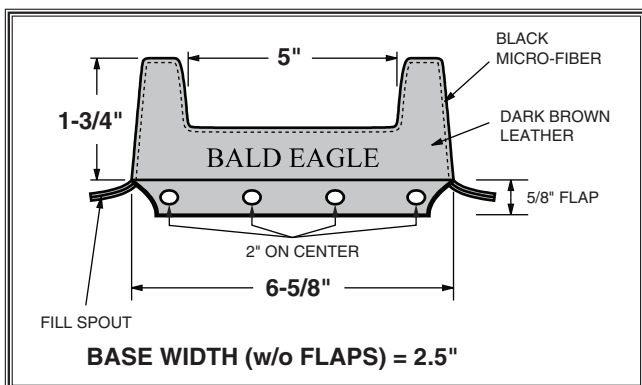
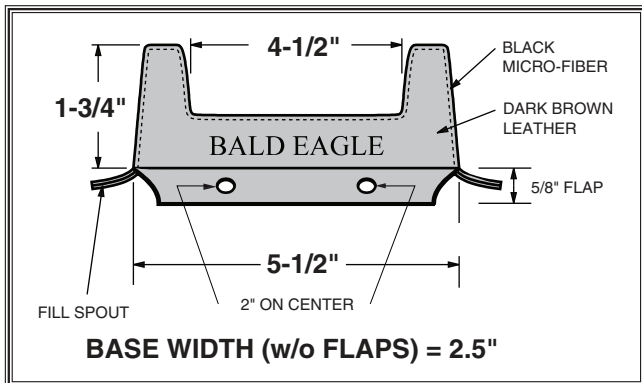
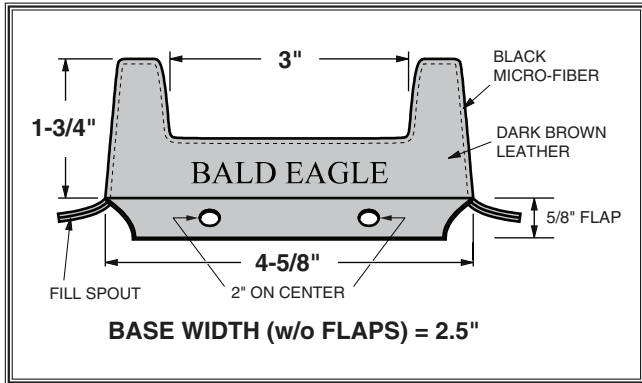
**Figure 31. BE1124 Radius Front Bag.**



**Bald Eagle®**

### BALD EAGLE FRONT BAGS FOR BE1209

We designed three top-quality front bags for the BE1209. They are constructed with genuine leather and ultra-tough micro-fiber fabric to ensure rugged durability and long-lasting performance. Bags are sold unfilled. Refer to figures below for dimensions.



### BE1133—9" LONG REAR BAG w/1/4" SLOT

Designed with practicality and quality in mind, these high-end rear bags are world class! They were designed by a shooter for a shooter and manufactured by a shooter! The body is made of heavy top grain two-tone leather with a convenient fill spout in the back. The ears are made of ultra-tough micro fiber fabric that is extremely slick. Each ear has its own fill spout that easily tucks in. The built-in handle makes it easy to carry these on and off the line quickly. The BE1133 is 9" with a 1/4" slot.



### BE1045—UNIVERSAL RIFLE CLEANING KIT

Anyone with a variety of rifle calibers will value this handy cleaning kit. Cleaning tools are sized to fit .22LR, .243, .270 and .30 caliber barrels. Includes phosphor bronze brushes, mops, rods/handles, slotted tips, brass jags and cleaning patches.

